

ENTRANCE SYSTEMS

NEW ARCTICFRONT™ SERIES 375-T THERMAL DOORS HIGH-PERFORMANCE THERMAL ENTRANCE SYSTEM



ARCTICFRONT™
HIGH PERFORMANCE THERMAL



- NFRC-Rated
- Tested in Accordance with AAMA 507
- U-Factors as Low as 0.38 Using Low-E Insulating Glass
- Door and Frame are Thermally Broken Utilizing 20 mm Struts
- 3-3/4" (95 mm) Medium Thermally Broken Stiles for Butt Hinges, or 3-9/16" (90 mm) for Continuous Geared Hinge
- 2-5/8" (67 mm) Depth
- Includes Glass Stops for 1" (25 mm) Glazing
- Choice of Either 6" (152 mm) Standard or 10" (254 mm) Bottom Rail



SERIES 375-T

Hinging Hardware: Butt Hinges or Continuous Gear Hinge Only
Closer: Exposed Overhead (Surface Mounted)

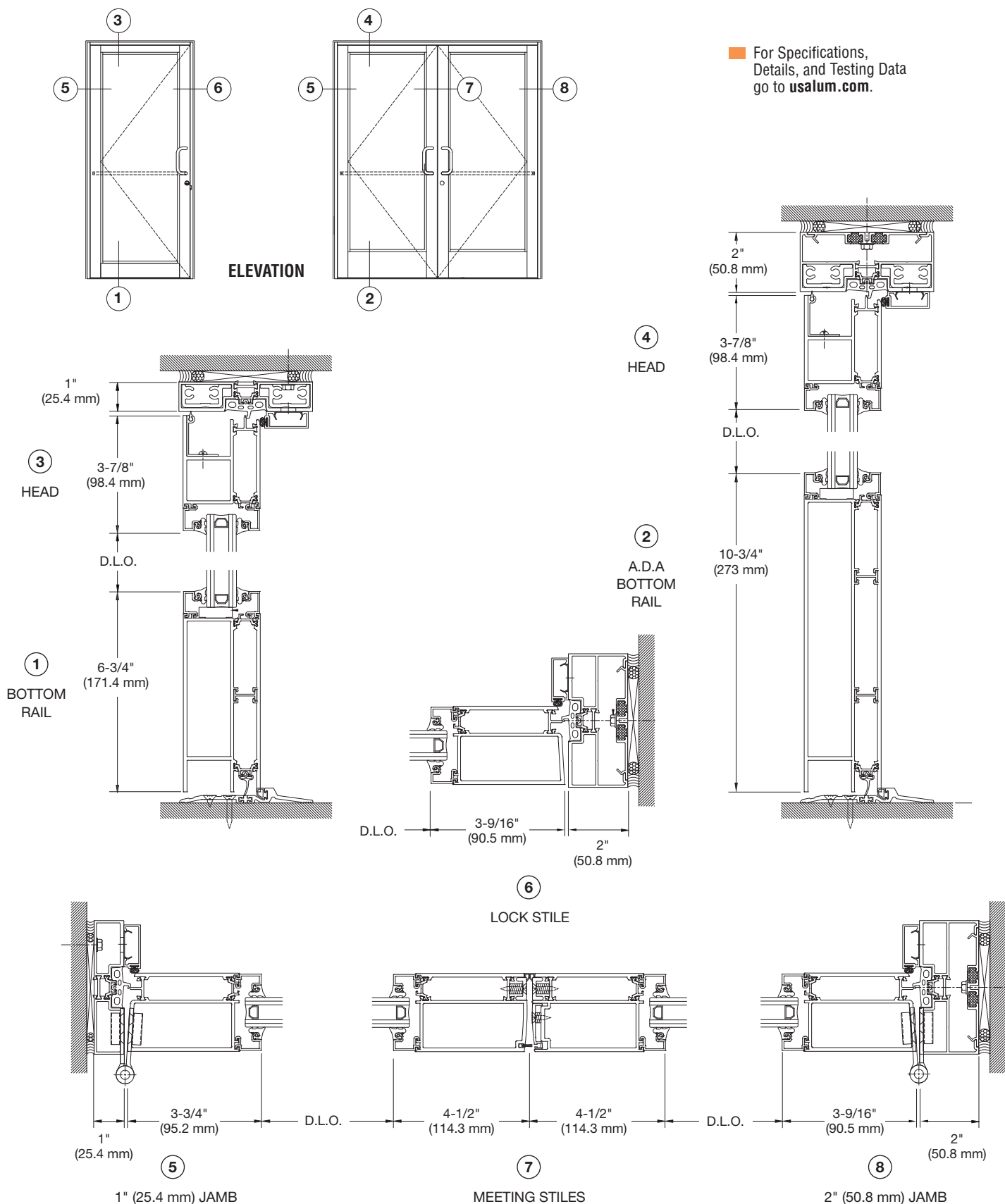
ArcticFront™ Series 375-T High Performance Thermal Doors offer exceptional thermal protection and are designed to meet or exceed evolving energy codes. The NFRC-rated doors are thermally broken utilizing 20 mm struts and can provide U-factors as low as 0.38 with low-E glass. ArcticFront™ Series 375-T Thermal Doors come equipped with medium stiles that are 2-5/8" (67 mm) thick and 3-3/4" (95 mm) wide, and offer door sizes up to 4' x 8' (1219 x 2438 mm). When used in conjunction with the ArcticFront™ Series 45X Thermal Storefront, the doors provide a complete thermal barrier with excellent protection against heat transfer. Series 375-T Thermal Doors are compatible with all CRL-U.S. Aluminum thermal storefronts, window walls, and curtain walls.

CRL
U.S. ALUMINUM
usalum.com • crlaurence.com
crl-arch.com

ARCTICFRONT™ SERIES 375-T THERMAL DOORS

TYPICAL DETAILS

For Specifications, Details, and Testing Data go to usalum.com.



NOT TO SCALE

AVDB4233 06.18