



BLAST MITIGATION

BLAST RESISTANT HORIZONTAL SLIDING WINDOW - SERIES BW8200

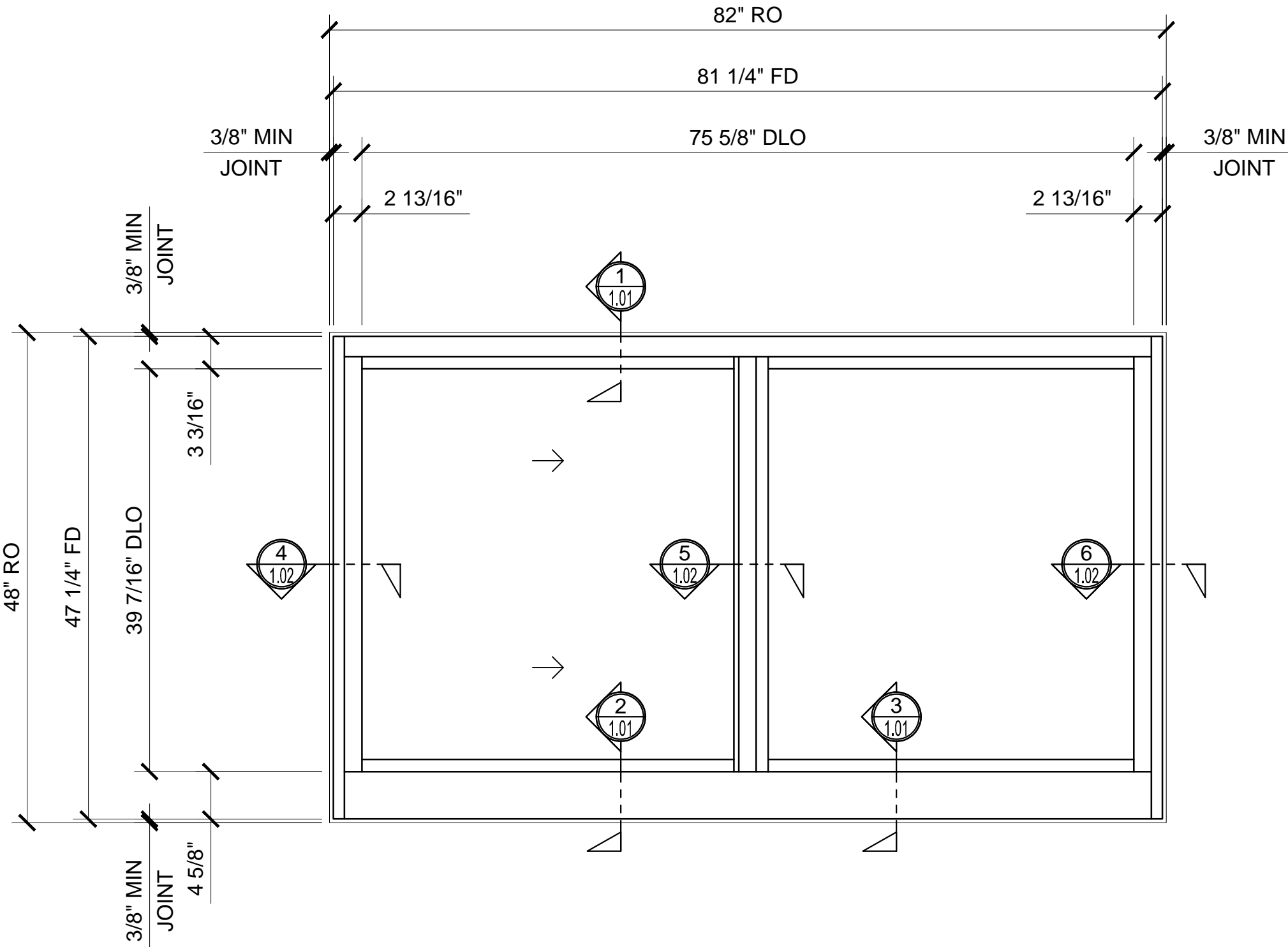
GLASS SIZING NOTE:
REFERENCE U.S. ALUMINUM
CATALOGS AND WEBSITE'S
LOAD CHARTS FOR SIZING
GUIDELINES.

1" = 1'-0"

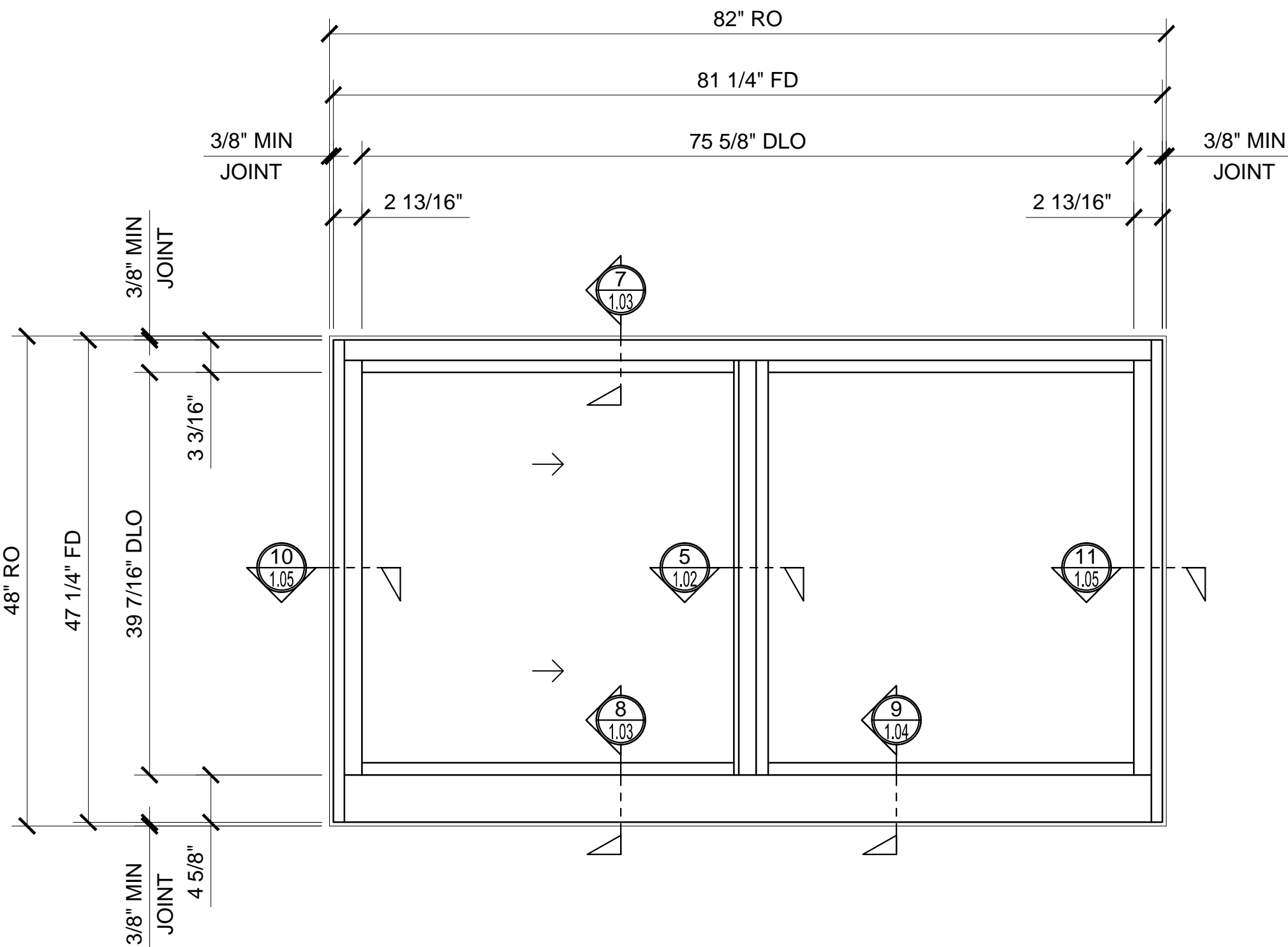
BW8200 SERIES SPECIFICATIONS

The Series BW8200 Blast Resistant Horizontal Sliding Window offers that rare combination of durability and toughness to meet blast mitigation requirements. The Defender Series of Blast Mitigation products are designed to provide protection for DoD and private sector facilities. Other Defender Series products include Storefront, Curtain Wall, Projected Windows, Horizontal Sliding, and Single Hung Windows.

4 1/2" (114) Deep Frame to Match Typical Building Conditions
DoD UFC 4-010-01 (Jan 07), ATFP, ISC Security Design Criteria for Blast Protection for Windows, ASTM F 1642
Tested to AAMA CW60
Accepts 1-1/32" (26) Glazing
Thermally Insulated - NFRC Certified
U-Factor as low as 0.33
Choice of Block or Fin Frame
Accessories Such as Mulling Bars, Subsills, Head adn Jamb Channels are Available
Available in an Array of Architectural Coatings and Anodized Finishes



SERIES BW8200 HORIZONTAL SLIDING WINDOW ELEVATION - BLOCK INSTALL



SERIES BW8200 HORIZONTAL SLIDING WINDOW ELEVATION - FIN INSTALL

STANDARD ABBREVIATIONS

- RO ROUGH OPENING
- FD FRAME DIMENSION
- DLO DAYLIGHT OPENING
- DO DOOR OPENING
- DD DOOR DIMENSION
- SMC SURFACE MOUNTED CLOSER
- OHCC OVERHEAD CONCEALED CLOSER

Revisions By:



Discription:
CRL BLAST MITIGATION
BLAST RESISTANT
HORIZONTAL SLIDING WINDOW
SERIES BW8200
FOR 1-1/32" GLASS

Drawn By: TMG

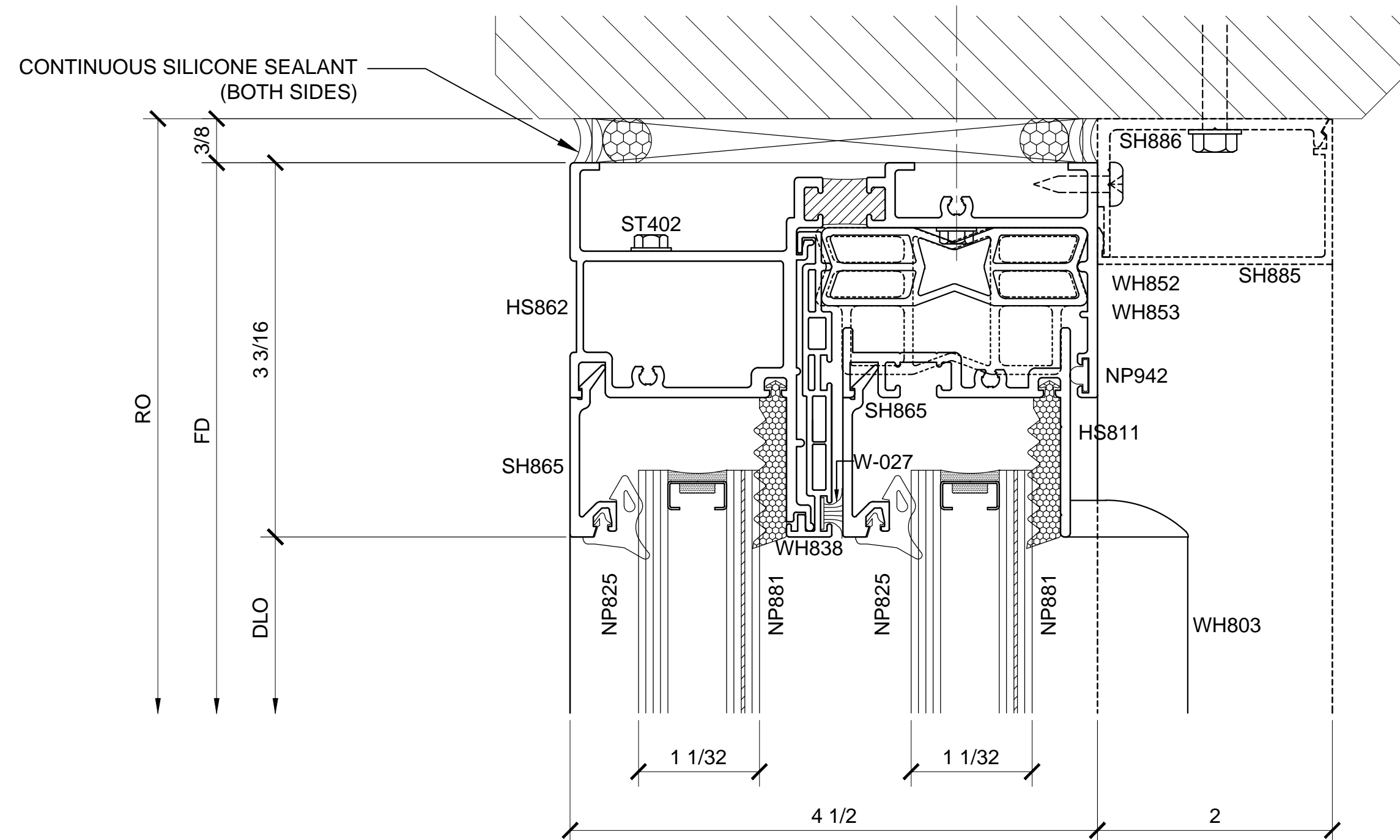
Date: 06/26/15

Scale: AS NOTED

File Name:

BW8200.dwg

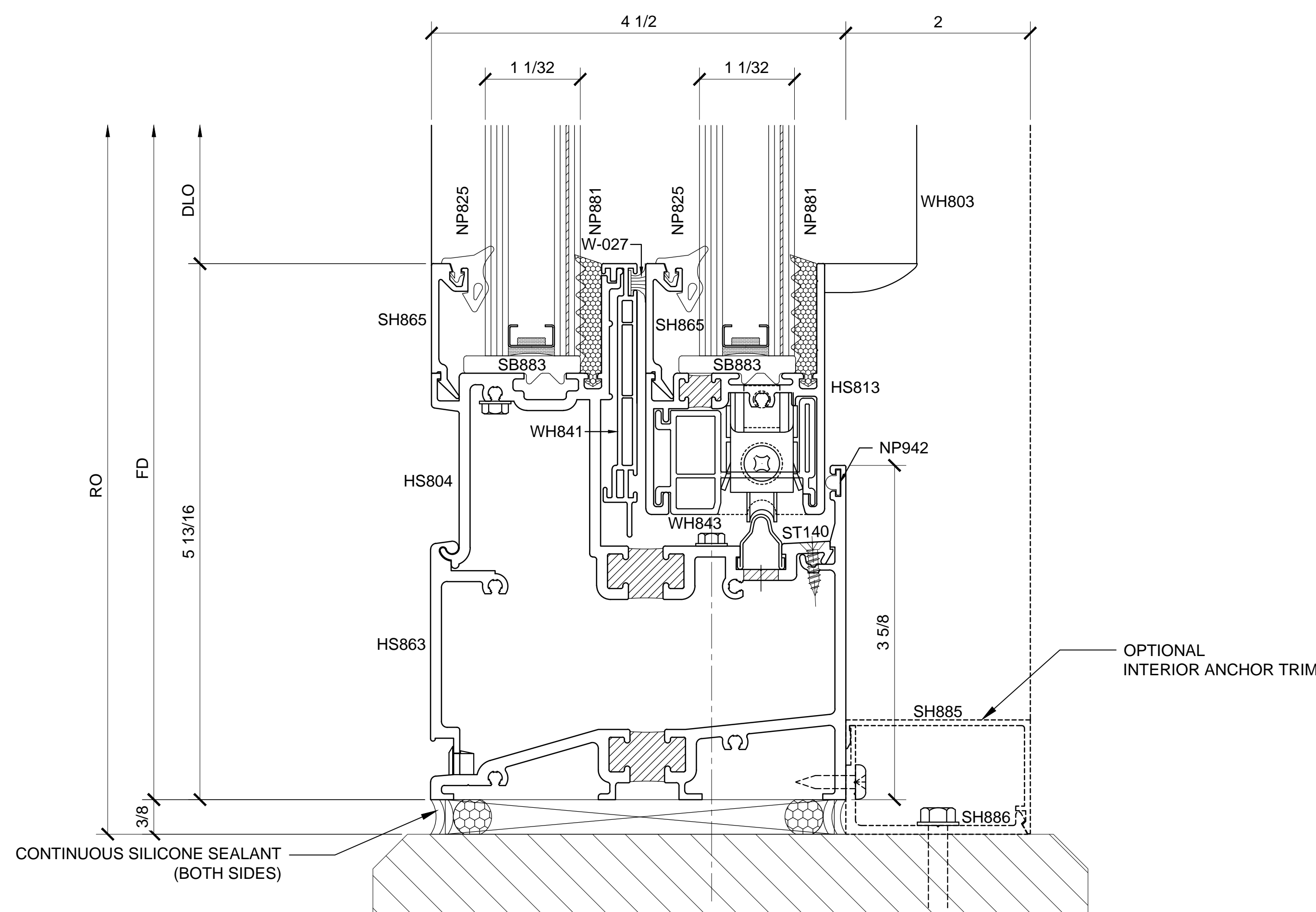
Sheet



① SECTION DETAIL AT HEAD

ARCH REF: N/A

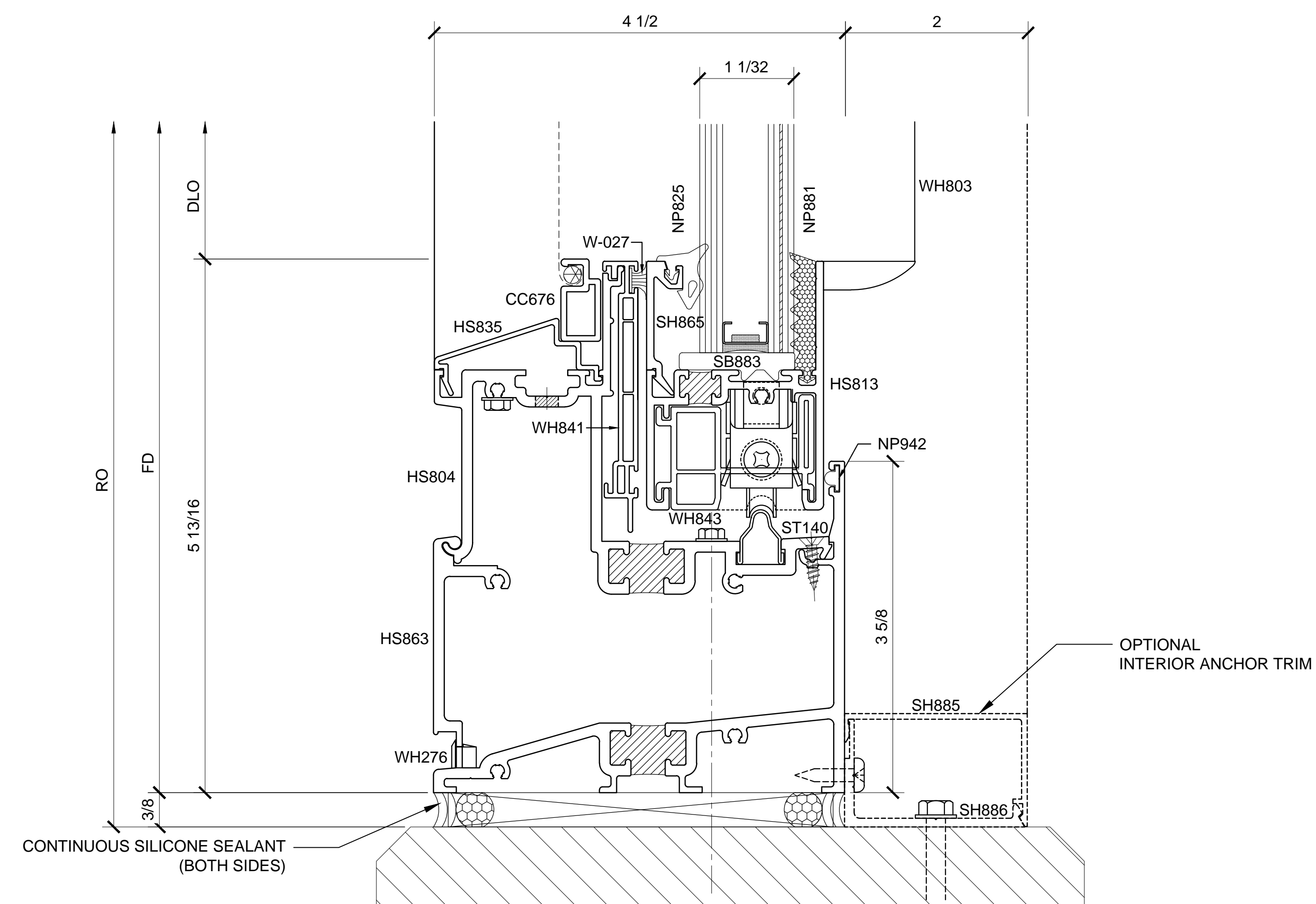
1'-0"=1'-0"



② SECTION DETAIL AT SILL

ARCH REF: N/A

1'-0"=1'-0"



③ SECTION DETAIL AT SILL

ARCH REF: N/A

1'-0"=1'-0"

BLAST RESISTANT HORIZONTAL SLIDING WINDOW - BW8200 SERIES DETAILS - BLOCK INSTALL

Revisions By:

CRL
ALUMINUM
C.R. LAURENCE CO. ARCHITECTURAL PRODUCTS
2503 E. Vernon Avenue, Los Angeles, CA 90058-1897
PH (800) 421-6144 FX 800-587-7301 www.crlaurence.com

Discription:
CRL BLAST MITIGATION
BLAST RESISTANT
HORIZONTAL SLIDING WINDOW
SERIES BW8200
FOR 1-1/32" GLASS

Drawn By: TMG

Date: 06/26/15

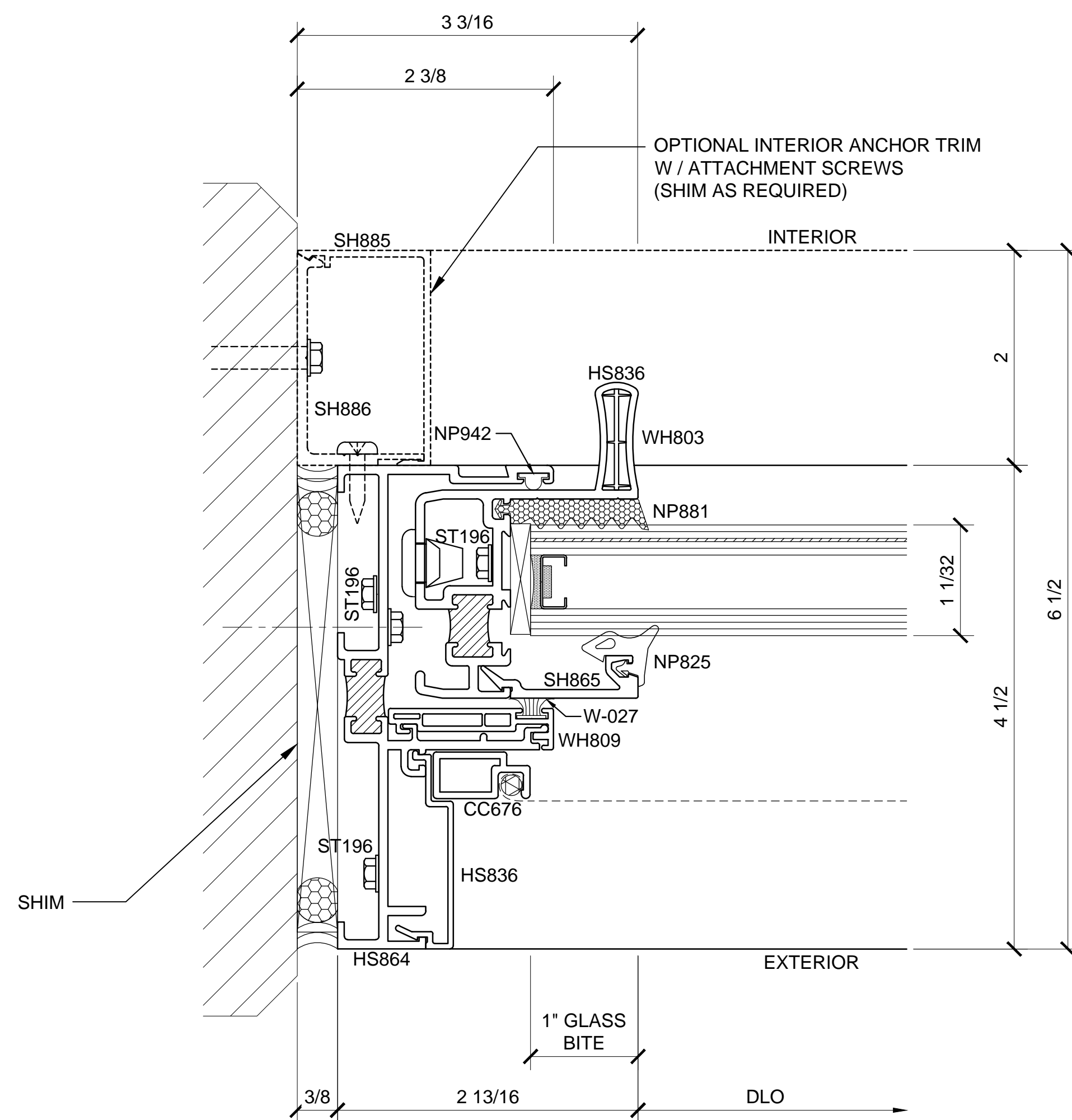
Scale: AS NOTED

File Name:

BW8200.dwg

Sheet

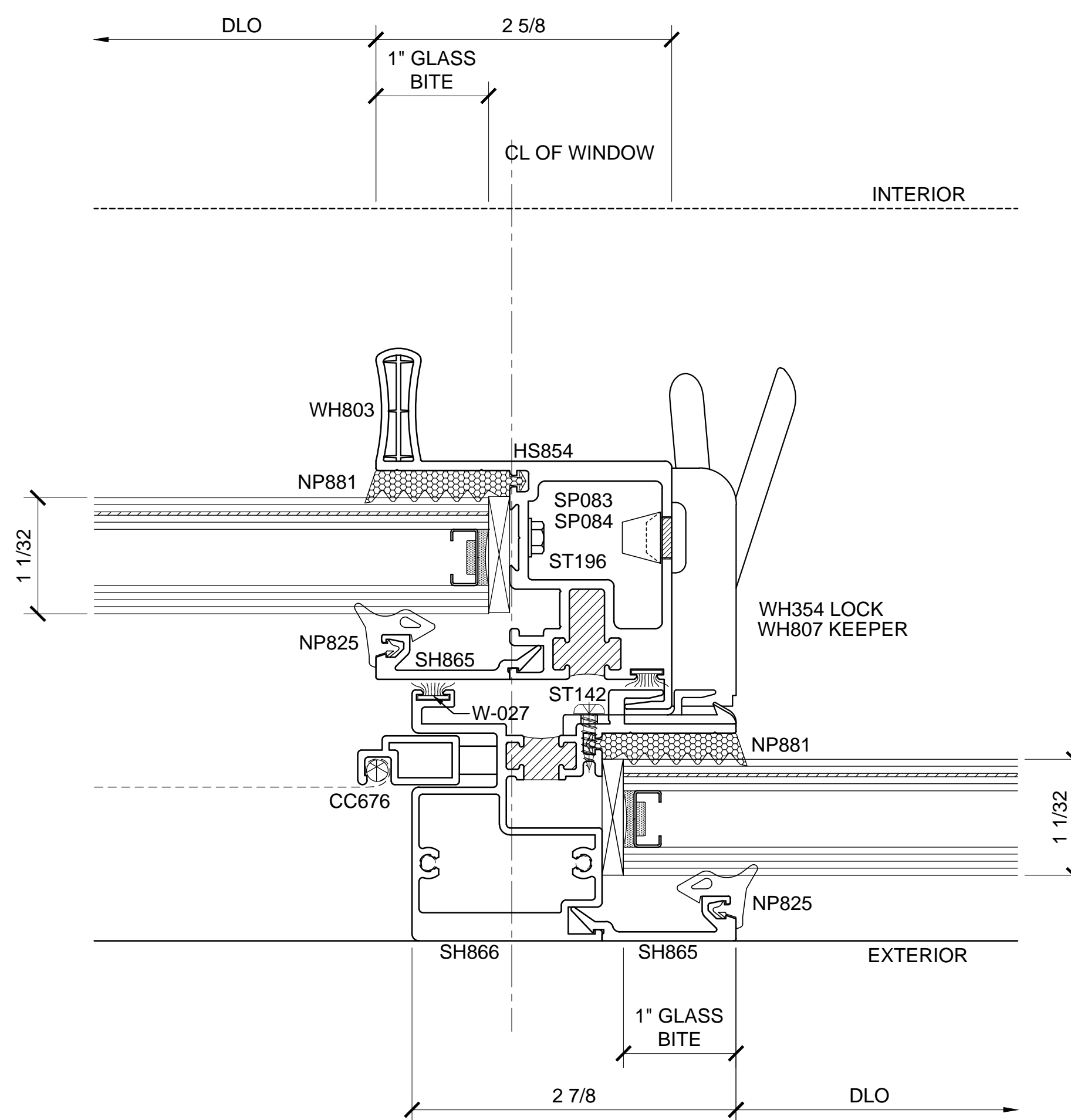
1.01



④ SECTION DETAIL AT JAMB

ARCH REF: N/A

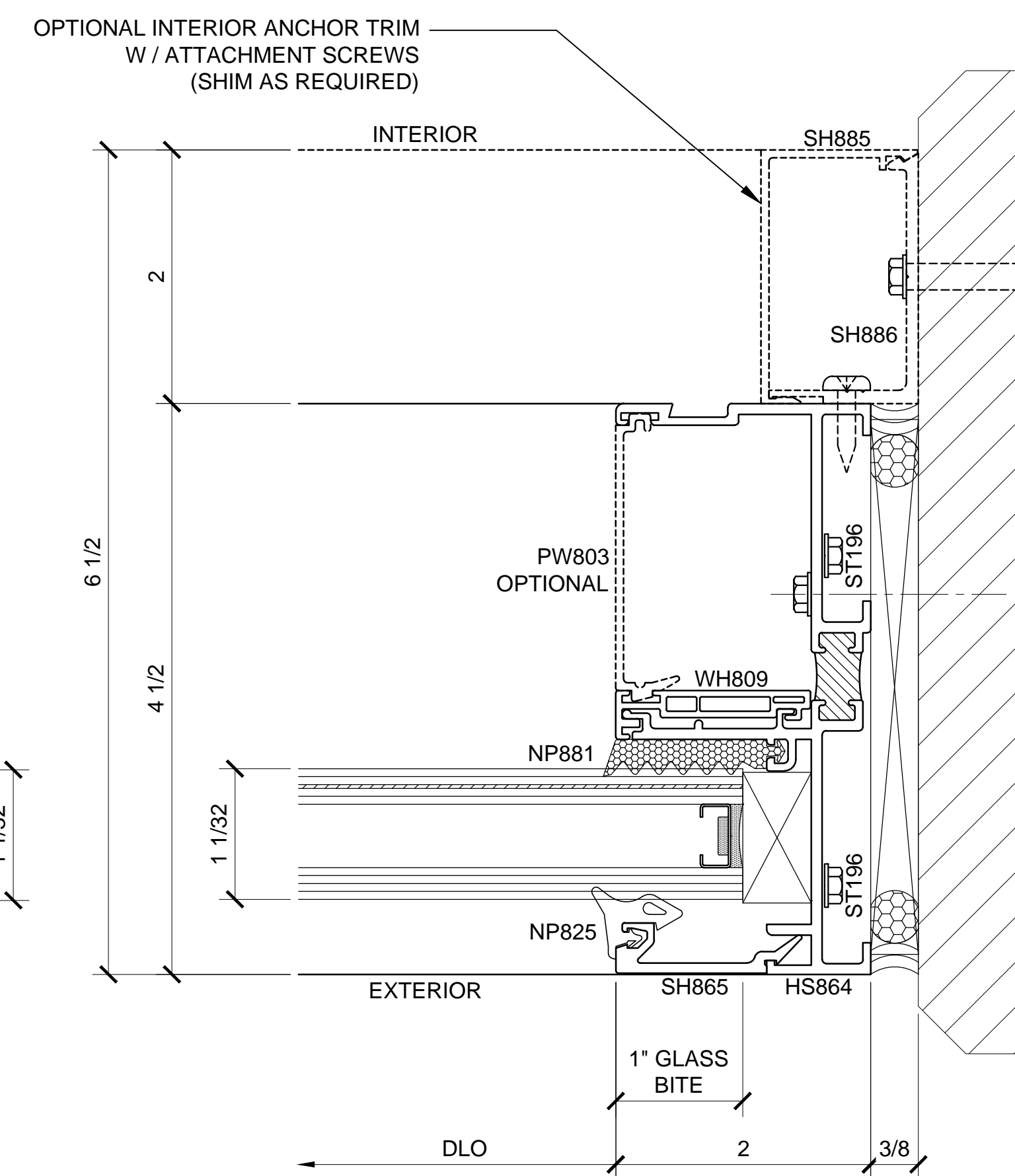
1'-0"=1'-0"



⑤ SECTION DETAIL AT JAMB

ARCH REF: N/A

1'-0"=1'-0"



⑥ SECTION DETAIL AT JAMB

ARCH REF: N/A

1'-0"=1'-0"

BLAST RESISTANT HORIZONTAL SLIDING WINDOW - BW8200 SERIES DETAILS - BLOCK INSTALL

Revisions By:

CRL
ALUMINUM
C.R. LAURENCE CO. ARCHITECTURAL PRODUCTS
2503 E. Vernon Avenue, Los Angeles, CA 90058-1897
PH (800) 421-6144 FX 800-587-7301 www.crlaurence.com

Discription:
CRL BLAST MITIGATION
BLAST RESISTANT
HORIZONTAL SLIDING WINDOW
SERIES BW8200
FOR 1-1/32" GLASS

Drawn By: TMG

Date: 06/26/15

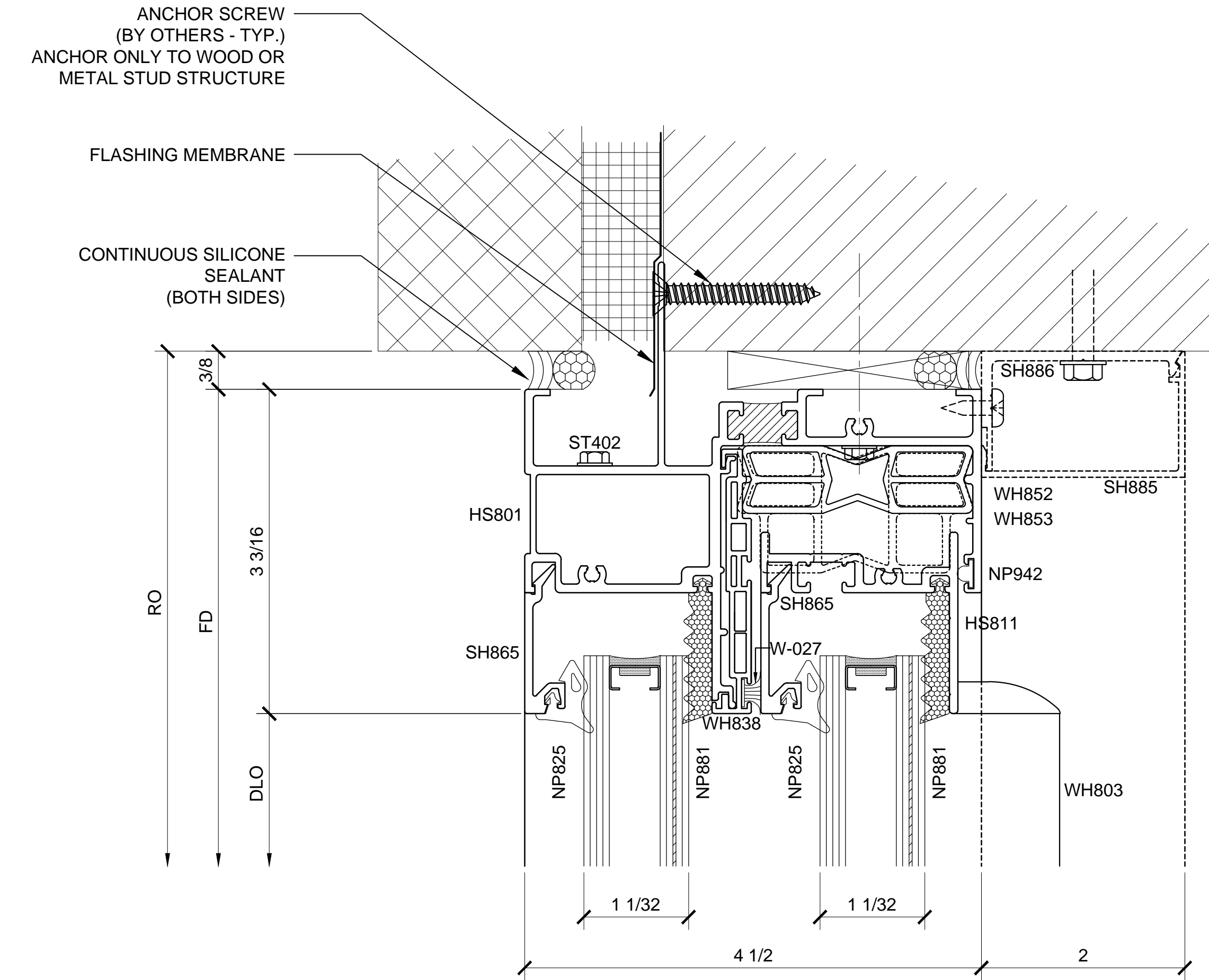
Scale: AS NOTED

File Name:

BW8200.dwg

Sheet

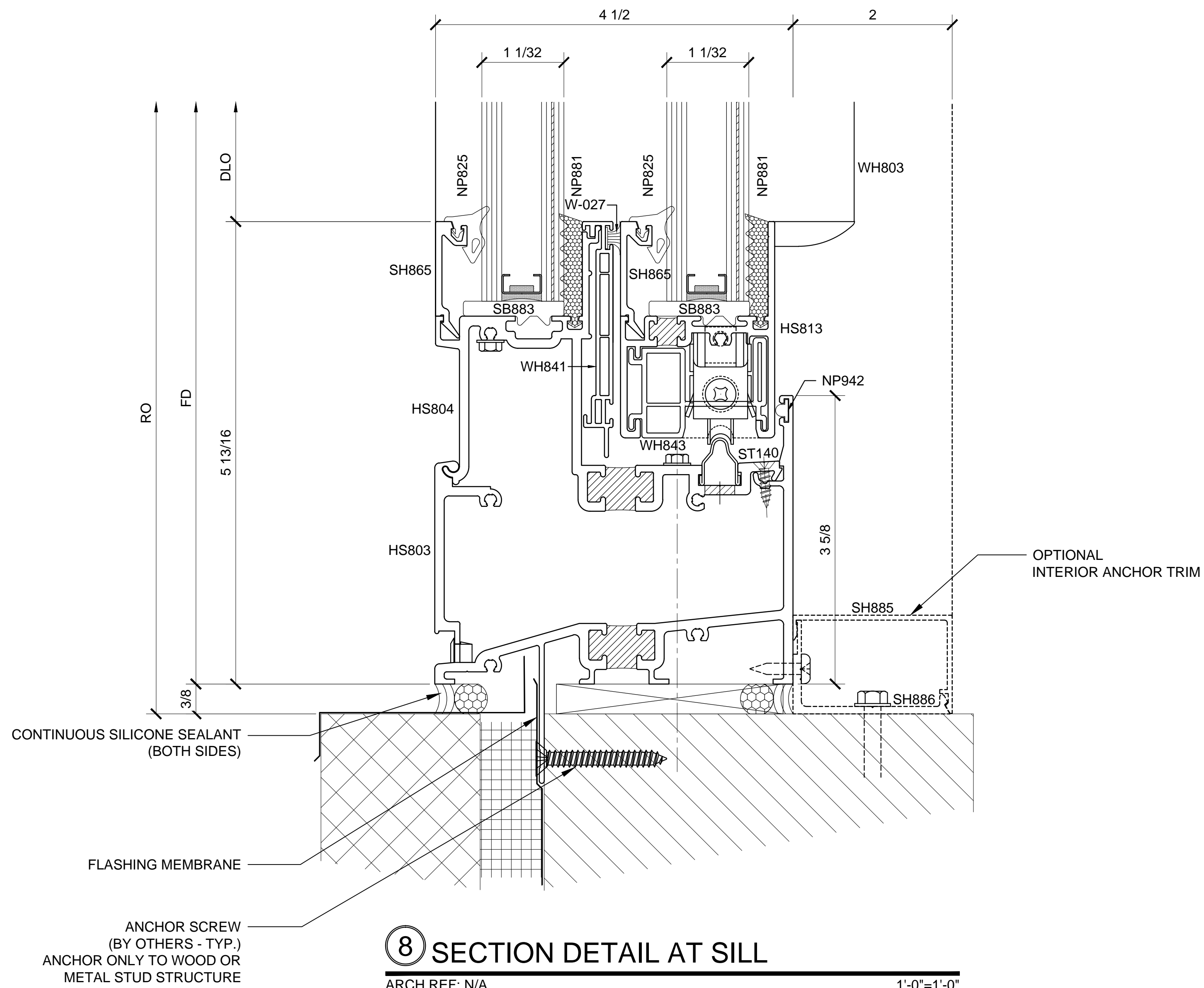
1.02



7 SECTION DETAIL AT HEAD

ARCH REF: N/A

1'-0"=1'-0"



8 SECTION DETAIL AT SILL

ARCH REF: N/A

1'-0"=1'-0"

BLAST RESISTANT HORIZONTAL SLIDING WINDOW - BW8200 SERIES DETAILS - FIN FRAME INSTALL

Revisions By:

CRL
ALUMINUM
C.R. LAURENCE CO. ARCHITECTURAL PRODUCTS
2503 E. Vernon Avenue, Los Angeles, CA 90058-1897
PH (800) 421-6144 FX 800-587-7301 www.crlaurence.com

Description:
CRL BLAST MITIGATION
BLAST RESISTANT
HORIZONTAL SLIDING WINDOW
SERIES BW8200
FOR 1-1/32" GLASS

Drawn By: TMG

Date: 06/26/15

Scale: AS NOTED

File Name:

BW8200.dwg

Sheet

1.03

Description:

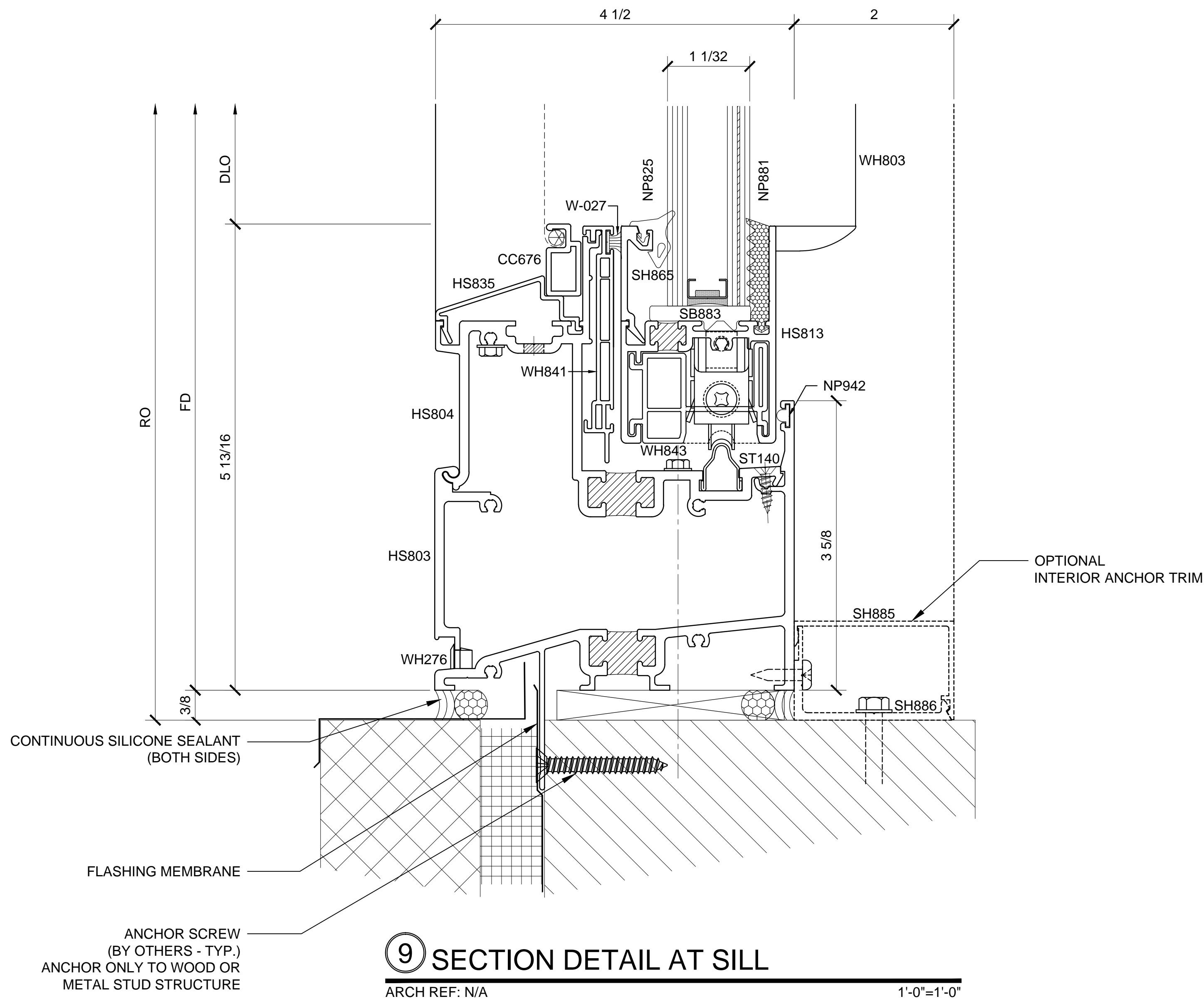
CRL BLAST MITIGATION
BLAST RESISTANT
HORIZONTAL SLIDING WINDOW
SERIES BW8200
FOR 1-1/32" GLASS

Drawn By: TMG

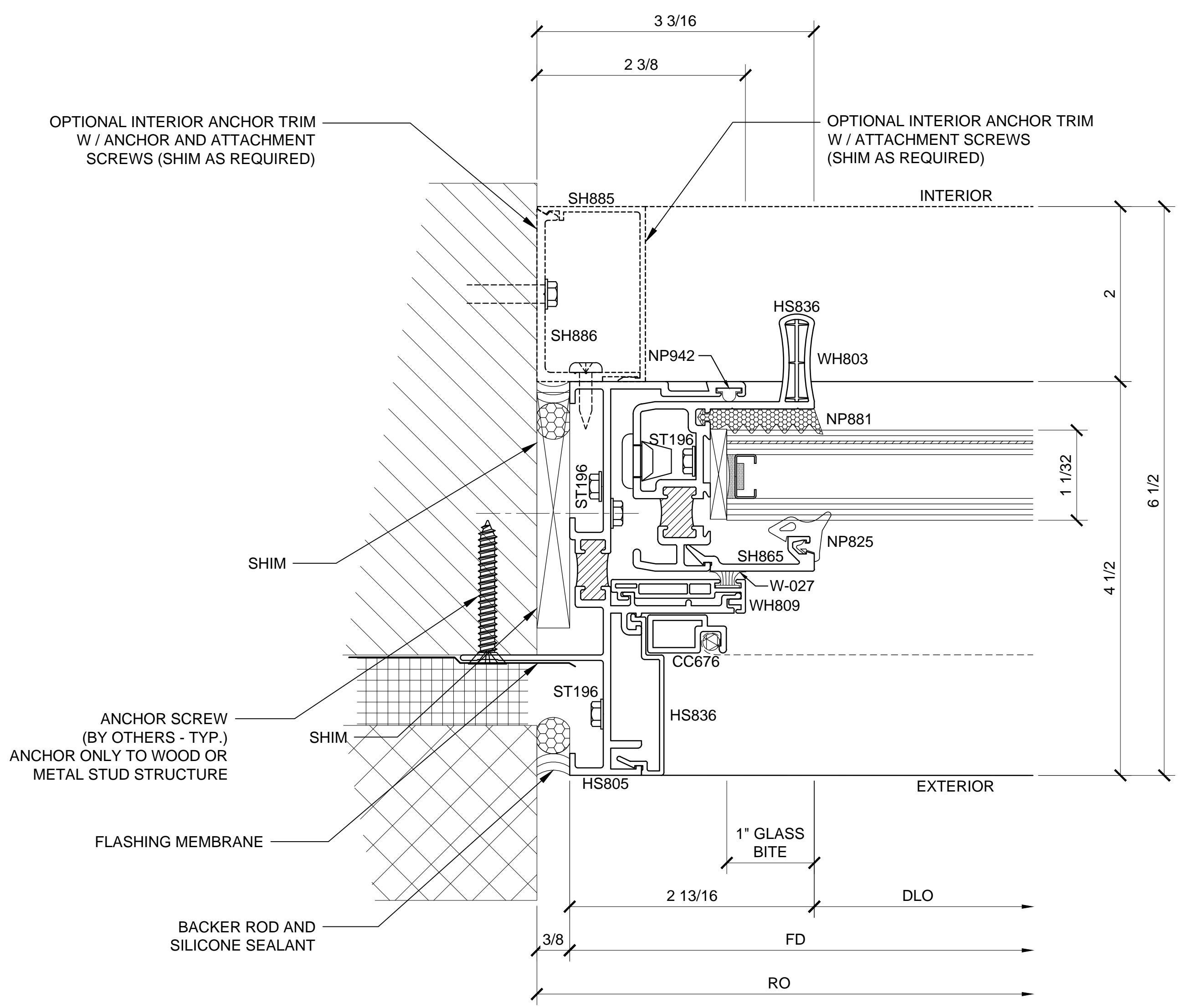
Date: 06/26/15

Scale: AS NOTED

File Name:
BW8200.dwg



BLAST RESISTANT HORIZONTAL SLIDING WINDOW - BW8200 SERIES DETAILS - FIN FRAME INSTALL

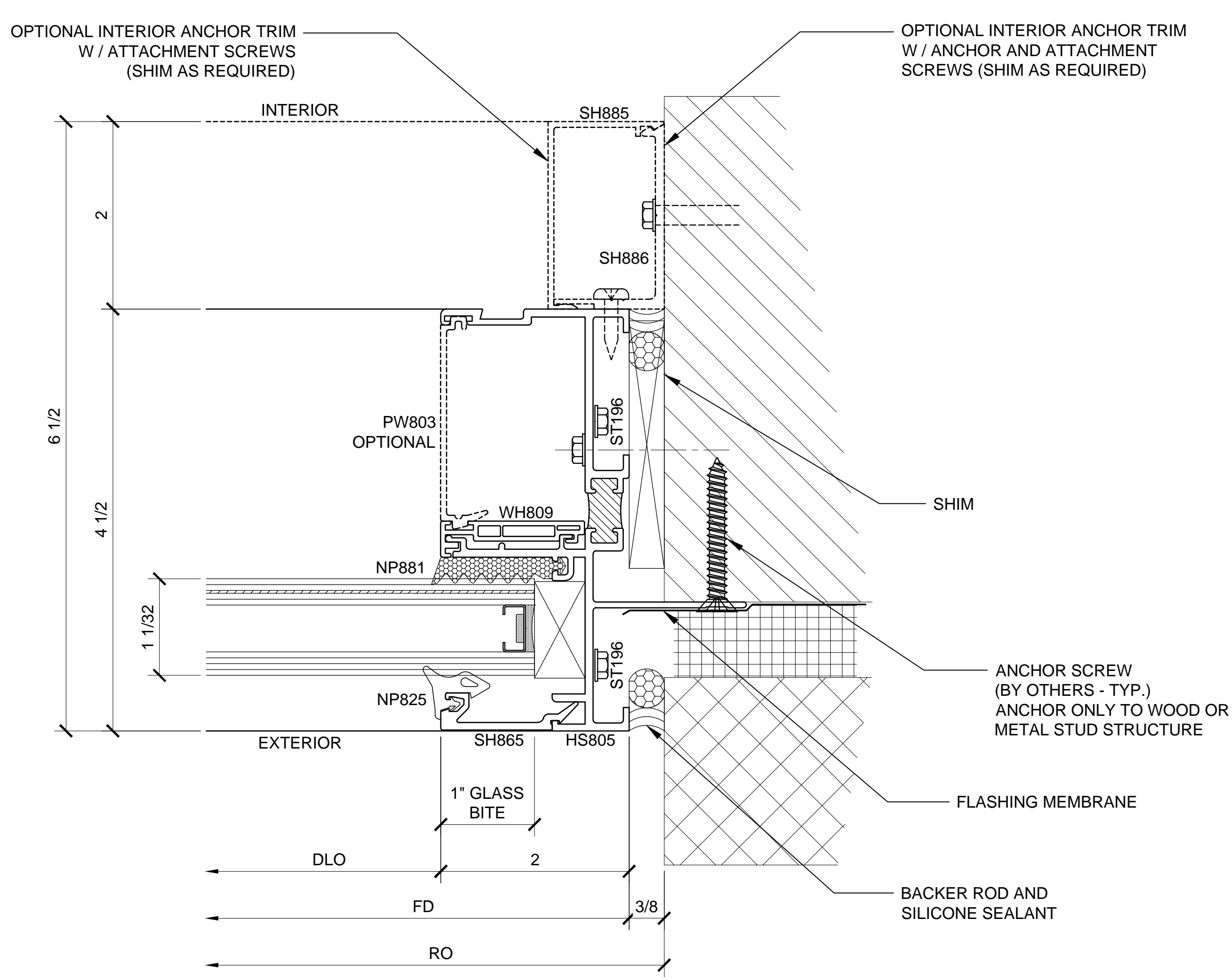


10

SECTION DETAIL AT JAMB

ARCH REF: N/A

1'-0"=1'-0"



11

SECTION DETAIL AT JAMB

ARCH REF: N/A

1'-0"=1'-0"