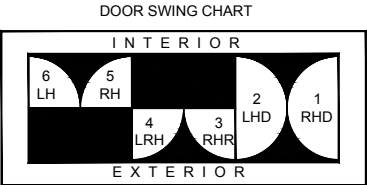
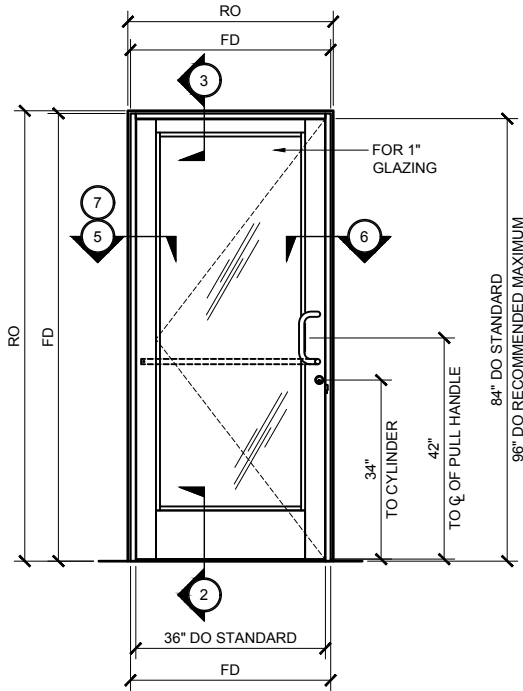




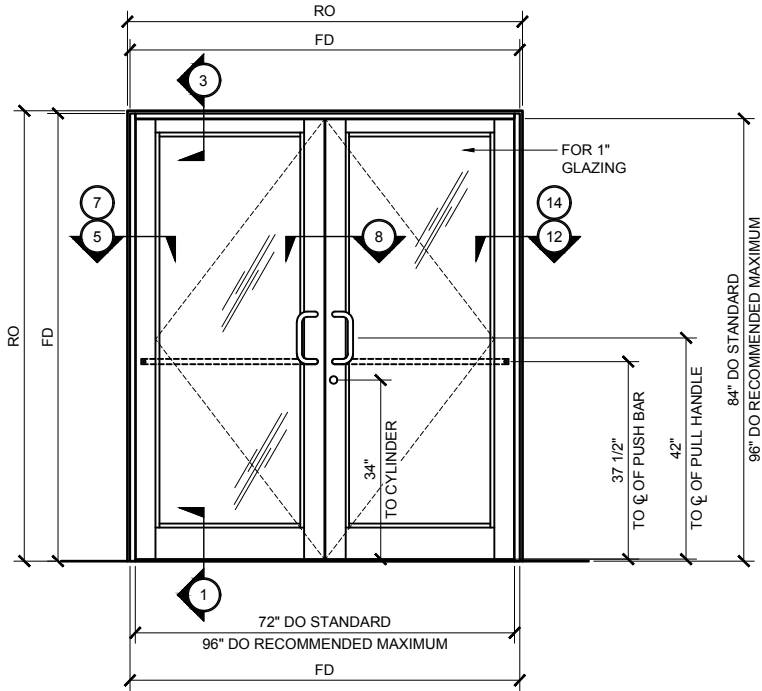
U.S. ALUMINUM ARCTIC FRONT SERIES 375-T DOOR SYSTEM



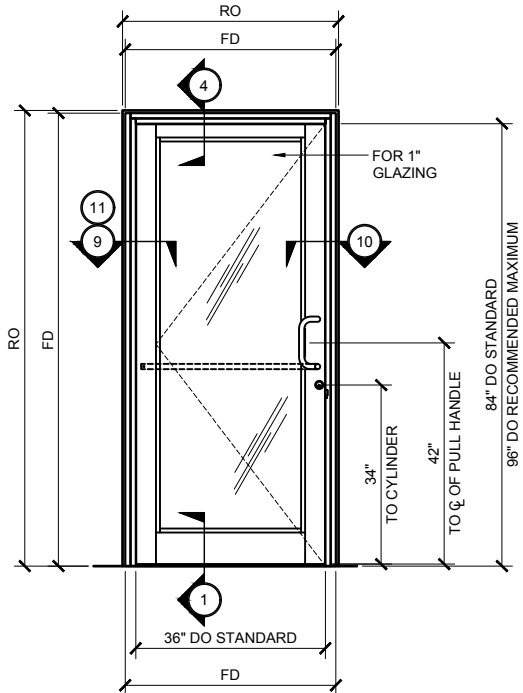
STANDARD ABBREVIATIONS	
RO	ROUGH OPENING
FD	FRAME DIMENSION
DLO	DAYLIGHT OPENING
DO	DOOR OPENING
DD	DOOR DIMENSION
SMC	SURFACE MOUNTED CLOSER
OHCC	OVERHEAD CONCEALED CLOSER



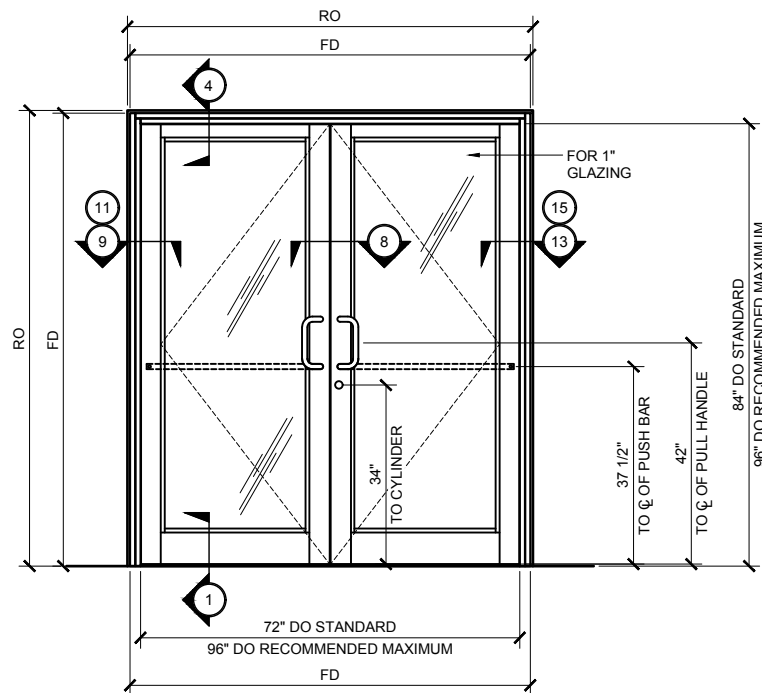
TYPICAL ELEVATION
ARCTIC FRONT SERIES 375-T DOOR w/ 1" SUBFRAME
(SINGLE DOOR @ UP / OVER FRAME) 3/4" =1'-0"
(SHOWN W/ A.D.A COMPLIANT BOTTOM RAIL)



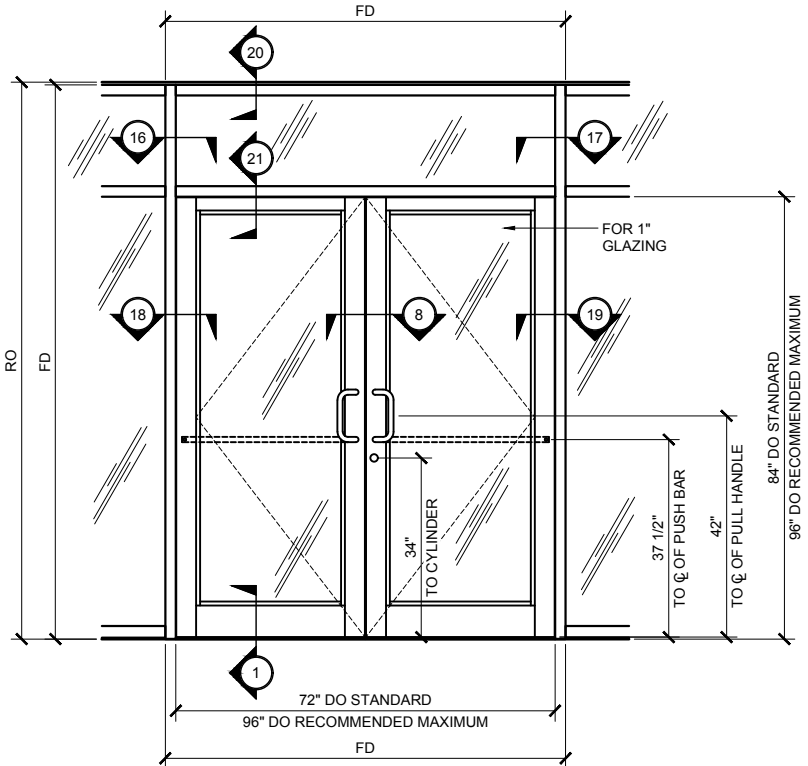
TYPICAL ELEVATION
ARCTIC FRONT SERIES 375-T DOOR w/ 1" SUBFRAME
(DOUBLE DOOR @ UP / OVER FRAME) 3/4" =1'-0"



TYPICAL ELEVATION
ARCTIC FRONT SERIES 375-T DOOR w/ 45X FRAME
(SINGLE DOOR @ UP / OVER FRAME) 3/4" =1'-0"



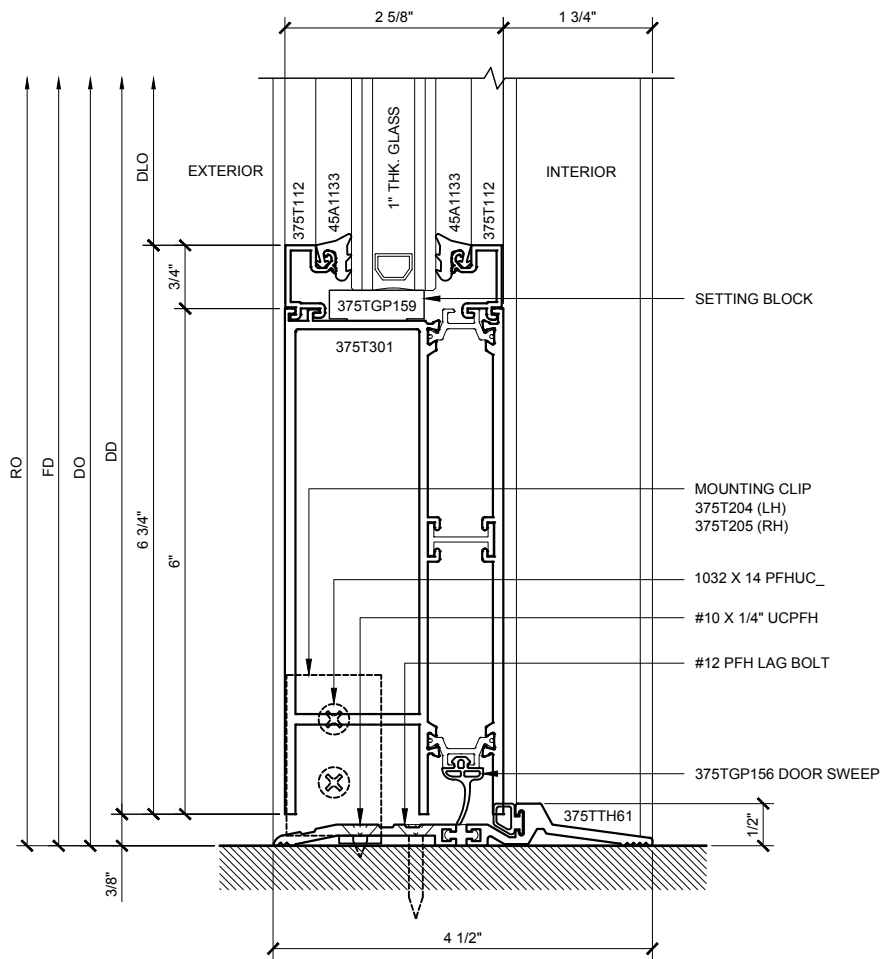
TYPICAL ELEVATION
ARCTIC FRONT SERIES 375-T DOOR w/ 45X FRAME
(DOUBLE DOOR @ UP / OVER FRAME) 3/4" =1'-0"



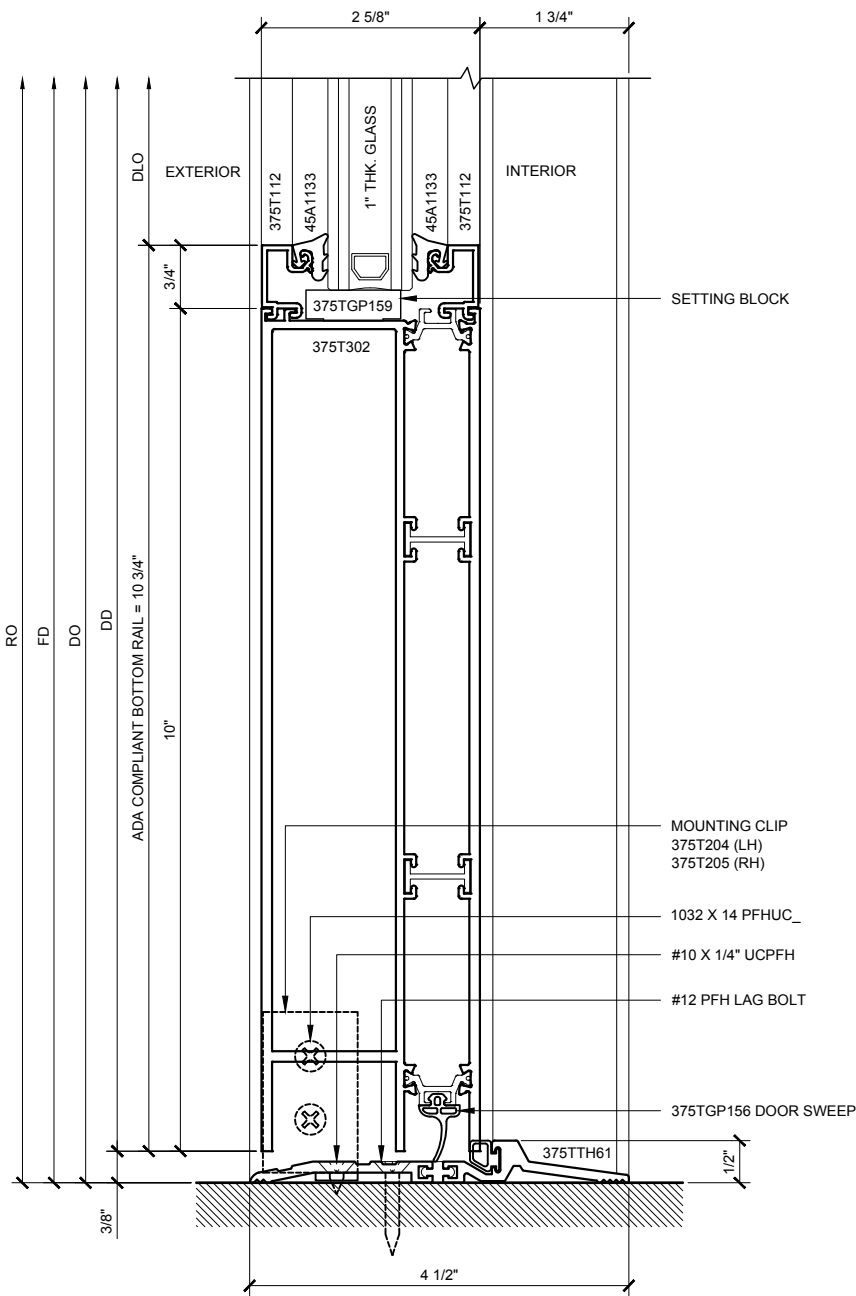
TYPICAL ELEVATION
ARCTIC FRONT SERIES 375-T DOOR w/ 45X FRAME
(DOUBLE DOOR @ TRANSOM FRAME)

Revisions By:

U.S. ALUMINUM ARCTIC FRONT SERIES 375-T DOOR SYSTEM



SECTION DETAIL @ DOOR SILL 1
SCALE: FULL SIZE



SECTION DETAIL @ A.D.A. DOOR SILL 2
SCALE: FULL SIZE

ARCTIC FRONT SERIES 375-T DOOR DETAILS
TYPICAL FOR ALL DOOR SILLS

Revisions By:

U.S. ALUMINUM

C.R. LAURENCE CO. ARCHITECTURAL PRODUCTS
2550 E. 10th Street, Suite 200, Anchorage, Alaska 99503
PH (907) 421-5144 FX (800) 557-7501 WWW.CRLAURENCE.COM

Description:

U.S. ALUMINUM
ARCTIC FRONT SERIES 375-T
DOOR SYSTEM

Drawn By: RPD

Date: 02/20/16

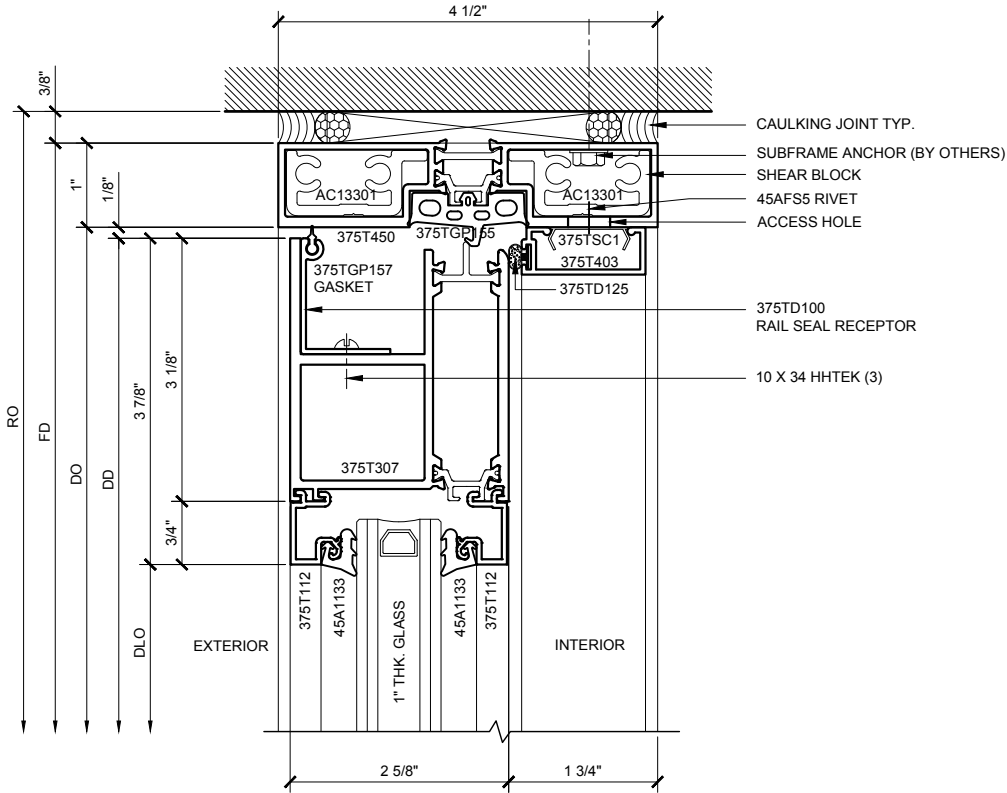
Scale: AS NOTED

File Name: 375-T.dwg

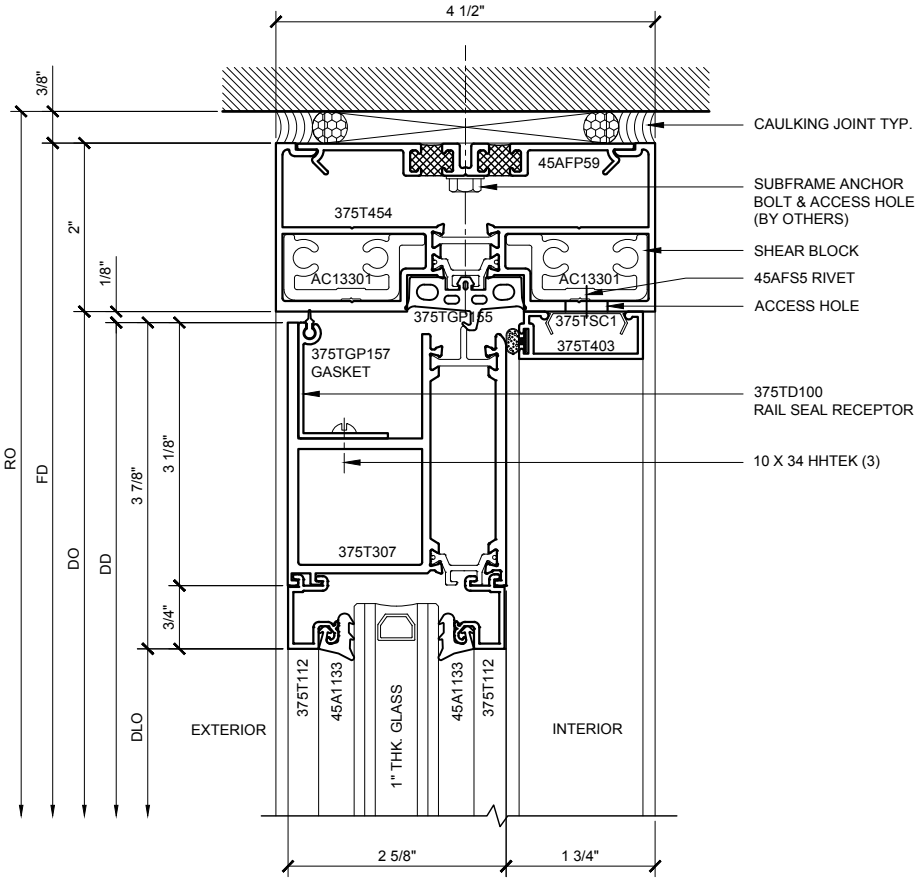
Sheet

375-T-2

U.S. ALUMINUM ARCTIC FRONT SERIES 375-T DOOR SYSTEM



SECTION DETAIL @ DOOR HEAD ③
SCALE: FULL SIZE



SECTION DETAIL @ DOOR HEAD ④
SCALE: FULL SIZE

ARCTIC FRONT SERIES 375-T DOOR DETAILS
FOR DOORS @ UP / OVER FRAME

Revisions By:

U.S. ALUMINUM

C.R. LAURENCE CO. ARCHITECTURAL PRODUCTS
10000 W. 10th Ave., Suite 200, Greenwood Village, CO 80120-1877
PH (800) 421-6144 FX 800-557-7201 WWW.CRLAURENCE.COM

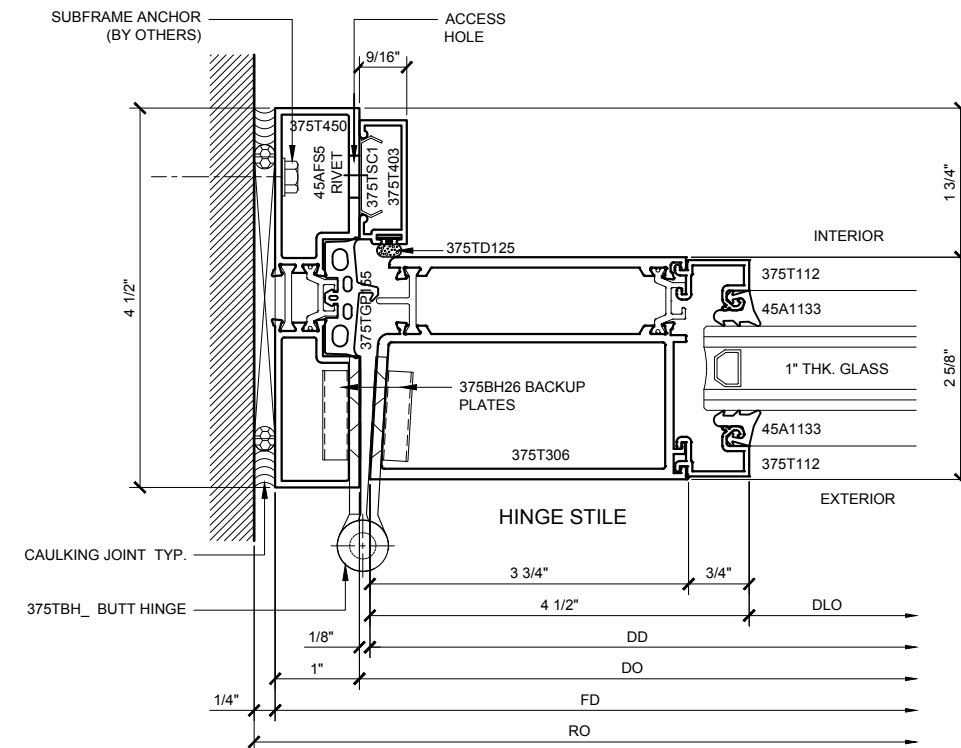
Description:

U.S. ALUMINUM
ARCTIC FRONT SERIES 375-T
DOOR SYSTEM

Drawn By: RPD
Date: 02/20/16
Scale: AS NOTED
File Name: 375-T.dwg
Sheet

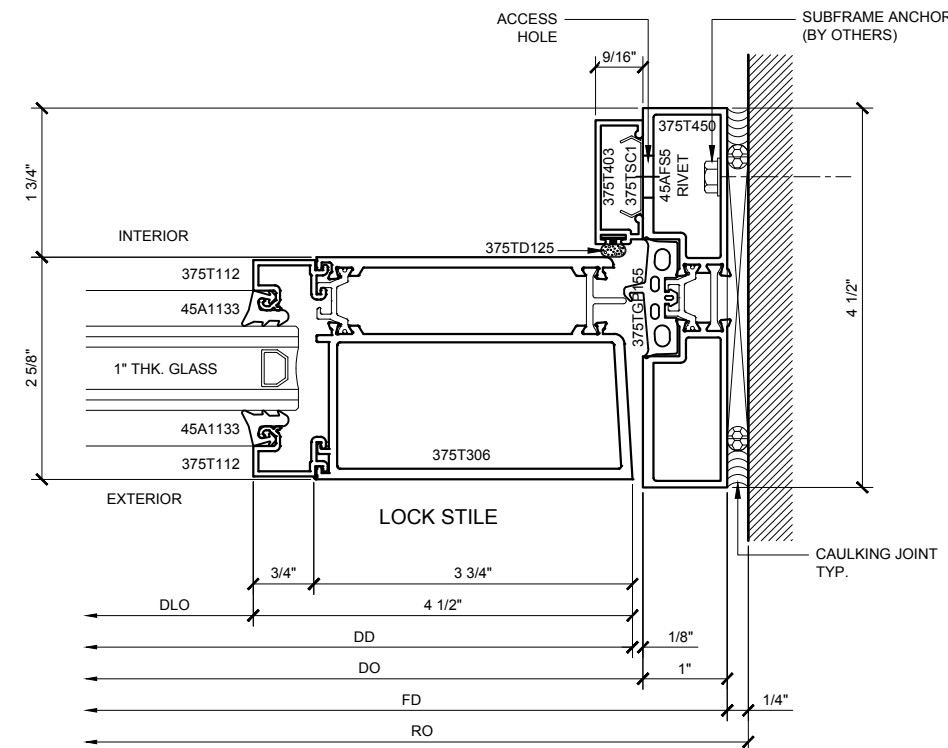
375-T-3

U.S. ALUMINUM ARCTIC FRONT SERIES 375-T DOOR SYSTEM



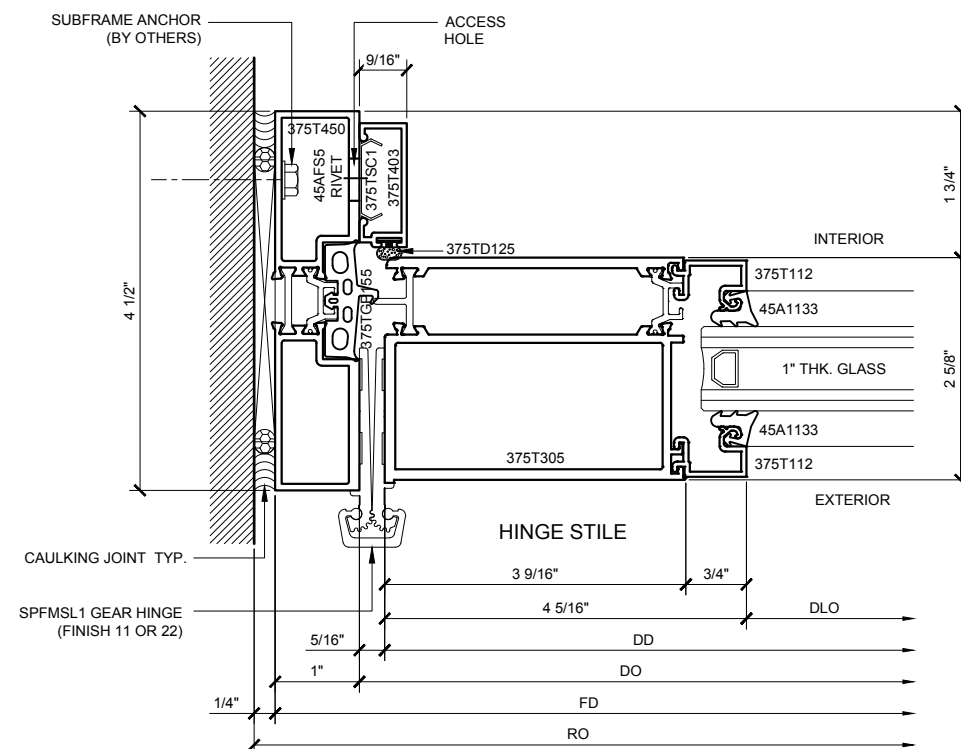
SECTION DETAIL @ DOOR JAMB (5)

SCALE: FULL SIZE



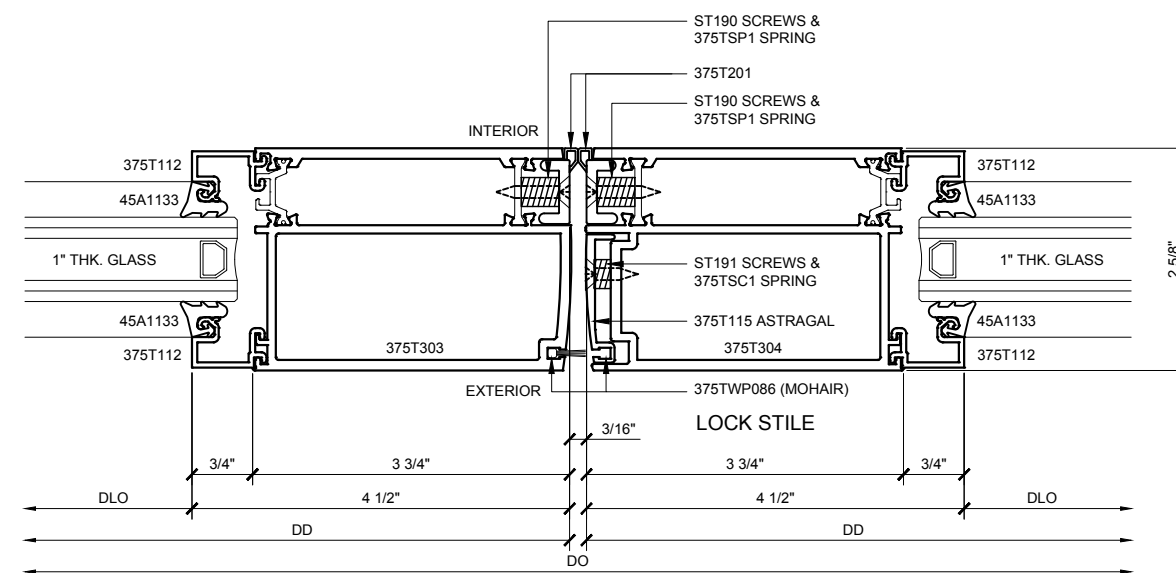
SECTION DETAIL @ DOOR JAMB (6)

SCALE: FULL SIZE



SECTION DETAIL @ DOOR JAMB (7)

SCALE: FULL SIZE



SECTION DETAIL @ MEETING STILES **8**

SCALE: FULL SIZE

ARCTIC FRONT SERIES 375-T DOOR DETAILS

Revisions By:



2503 E. Vernon Avenue, Los Angeles, C.A 90058-1897
PH (800)-421-6144 FX: 800-587-7501 www.crlaurence.com

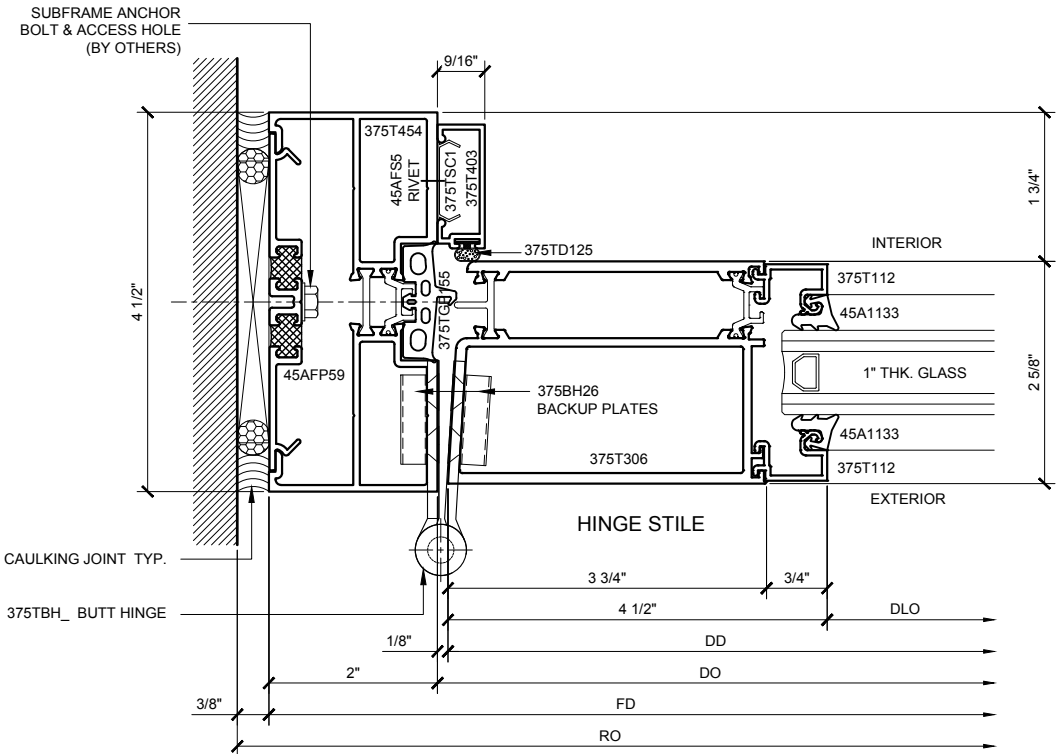
Description:

U.S. ALUMINUM
ARCTIC FRONT SERIES 375-T
DOOR SYSTEM

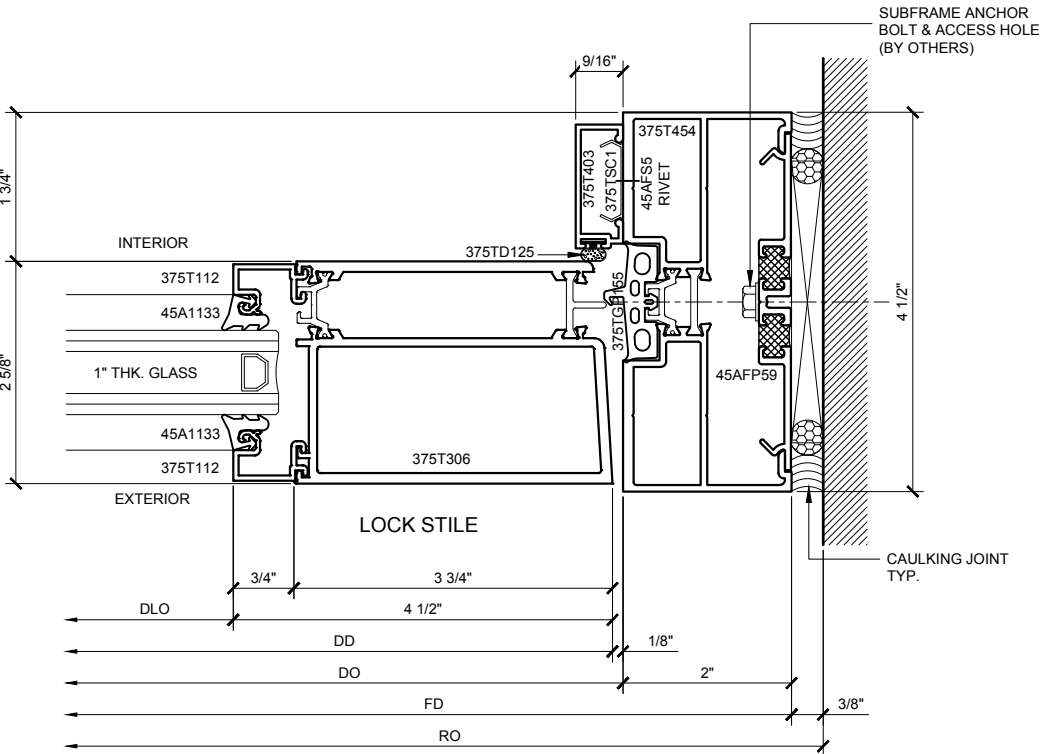
Drawn By:	RPD
Date:	02/20/16
Scale:	AS NOTED
File Name:	375-T.dwg
Sheet	

375-T-4

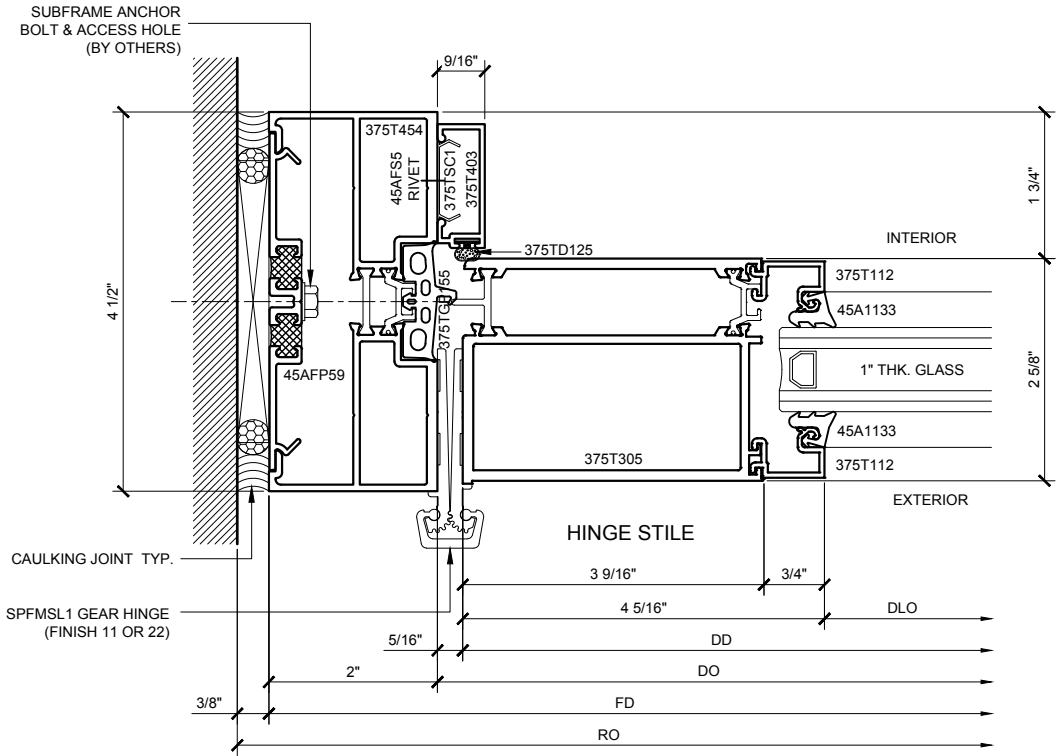
U.S. ALUMINUM ARCTIC FRONT SERIES 375-T DOOR SYSTEM



SECTION DETAIL @ DOOR JAMB 9
SCALE: FULL SIZE



SECTION DETAIL @ DOOR JAMB 10
SCALE: FULL SIZE



SECTION DETAIL @ DOOR JAMB 11
SCALE: FULL SIZE

ARCTIC FRONT SERIES 375-T DOOR DETAILS
FOR DOORS @ UP / OVER FRAME

Revisions By:

U.S. ALUMINUM

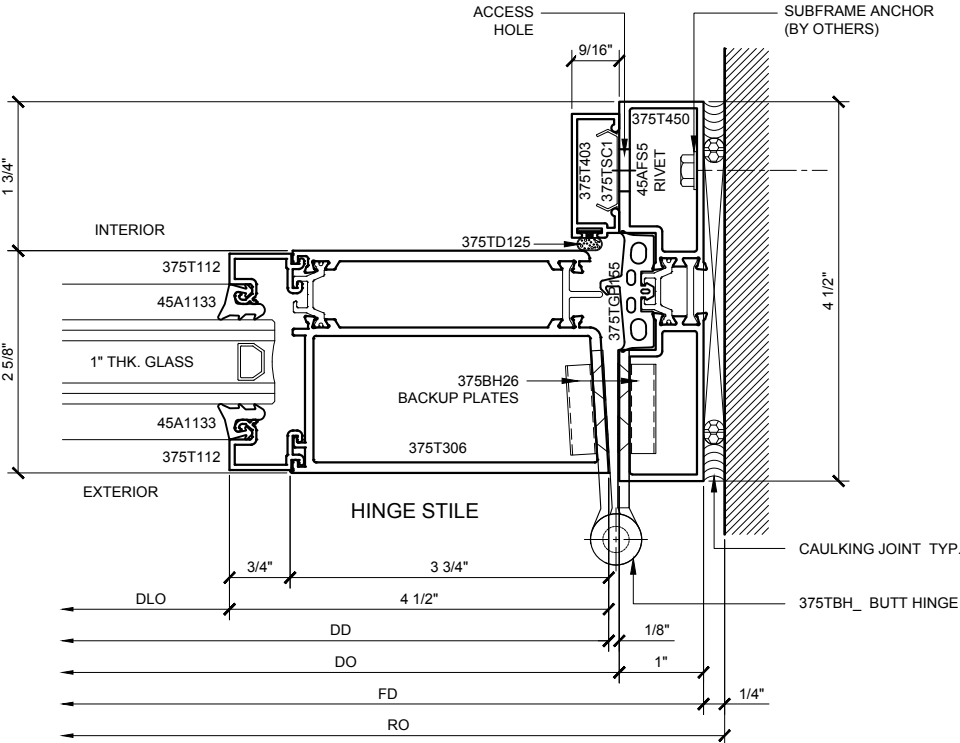
C.R. LAURENCE CO. ARCHITECTURAL PRODUCTS
2851 E. 14TH AVE., SUITE 100, DENVER, CO 80202-1877
PH (800) 421-6144 FX 800-557-7501 WWW.CRLAURENCE.COM

Description:
U.S. ALUMINUM
ARCTIC FRONT SERIES 375-T
DOOR SYSTEM

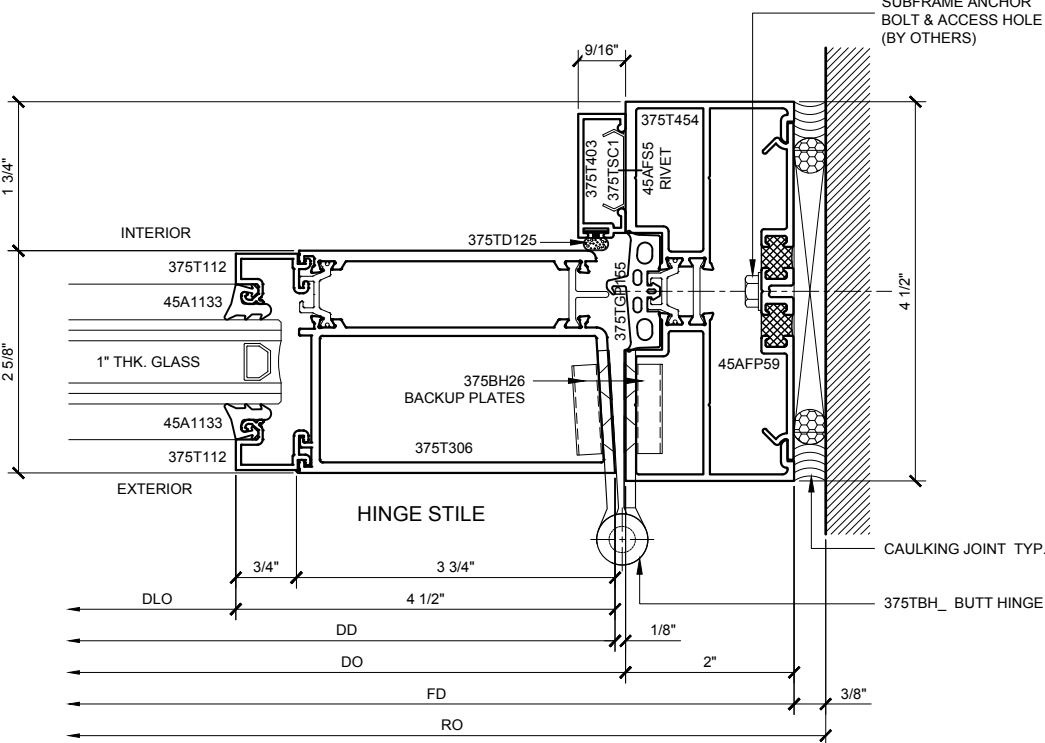
Drawn By: RPD
Date: 02/20/16
Scale: AS NOTED
File Name: 375-T.dwg
Sheet

375-T-5

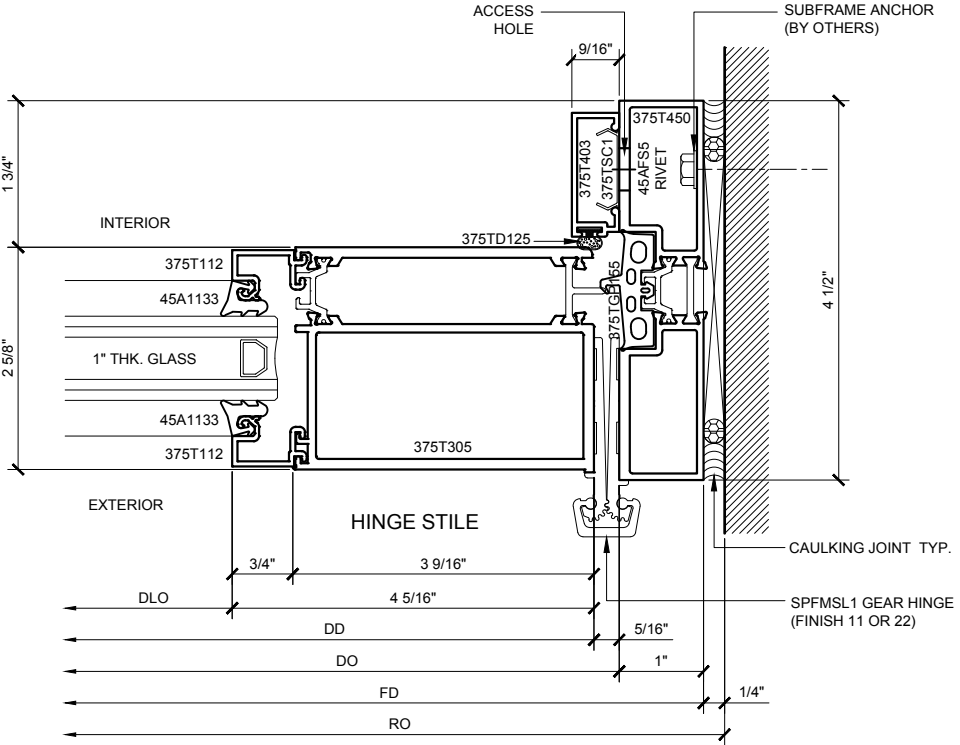
U.S. ALUMINUM ARCTIC FRONT SERIES 375-T DOOR SYSTEM



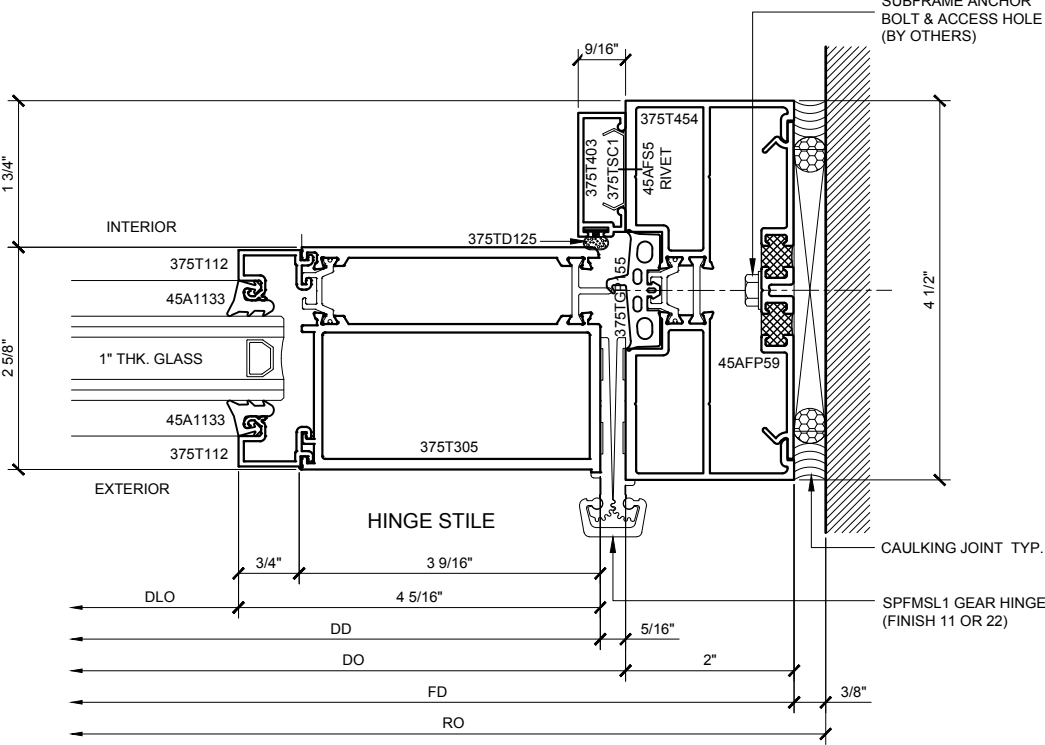
SECTION DETAIL @ DOOR JAMB 12
SCALE: FULL SIZE



SECTION DETAIL @ DOOR JAMB 13
SCALE: FULL SIZE



SECTION DETAIL @ DOOR JAMB 14
SCALE: FULL SIZE



SECTION DETAIL @ DOOR JAMB 15
SCALE: FULL SIZE

ARCTIC FRONT SERIES 375-T DOOR DETAILS
FOR DOORS @ UP / OVER FRAME

Revisions By:

U.S. ALUMINUM

C.R. LAURENCE CO. ARCHITECTURAL PRODUCTS

25501 E. Harvard Ave., Suite 200, Aurora, CO 80016-1877

PH (800) 421-5144 FX (800) 557-7501 WWW.CRLAURENCE.COM

Description:

U.S. ALUMINUM

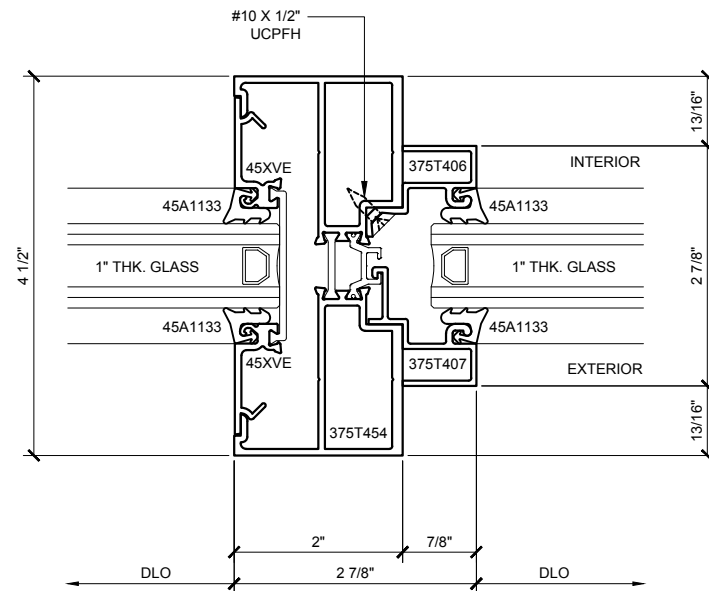
ARCTIC FRONT SERIES 375-T

DOOR SYSTEM

Drawn By: RPD
Date: 02/20/16
Scale: AS NOTED
File Name: 375-T.dwg
Sheet

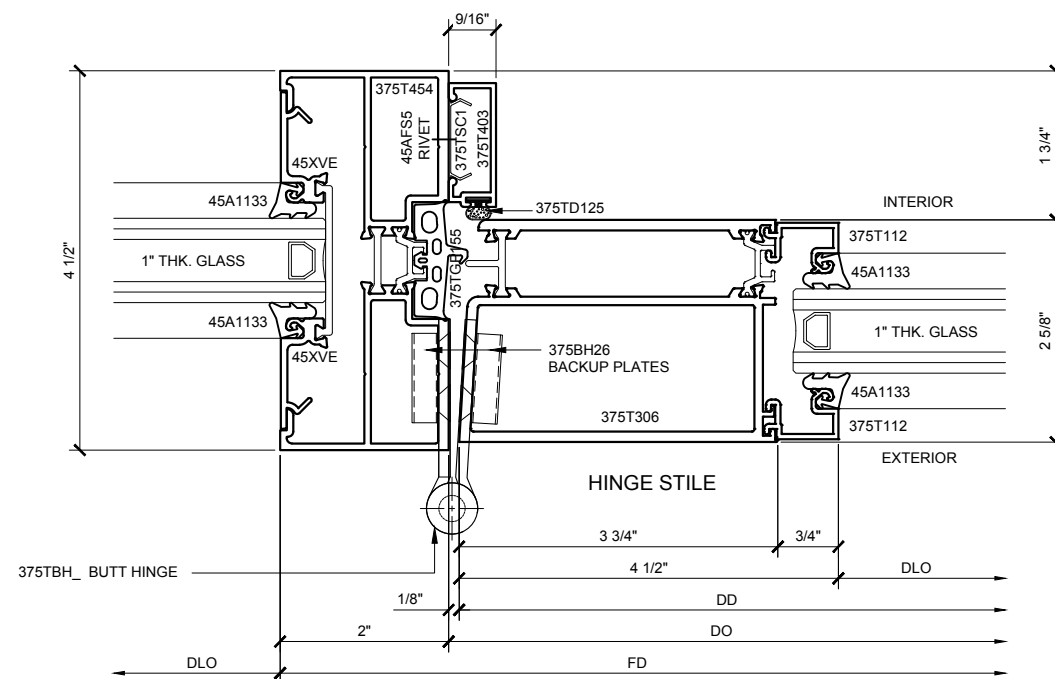
375-T-6

U.S. ALUMINUM ARCTIC FRONT SERIES 375-T DOOR SYSTEM

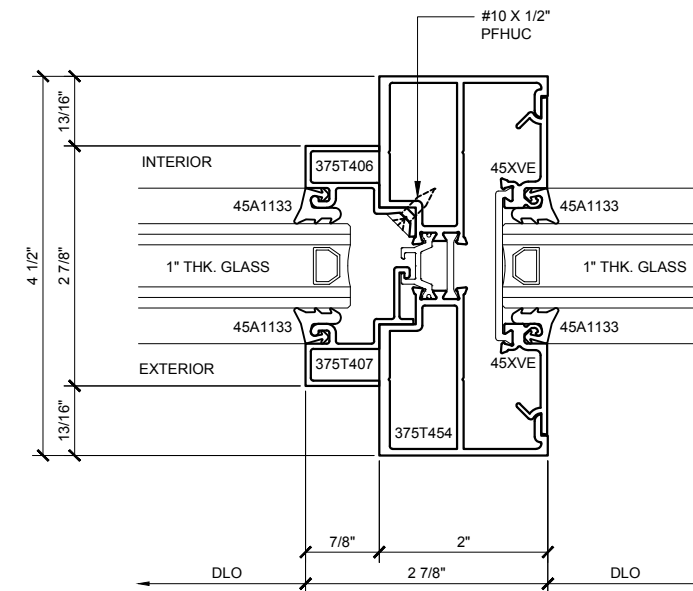


SECTION DETAIL @ VERTICAL MULLION (16)

SCALE: FULL SIZE

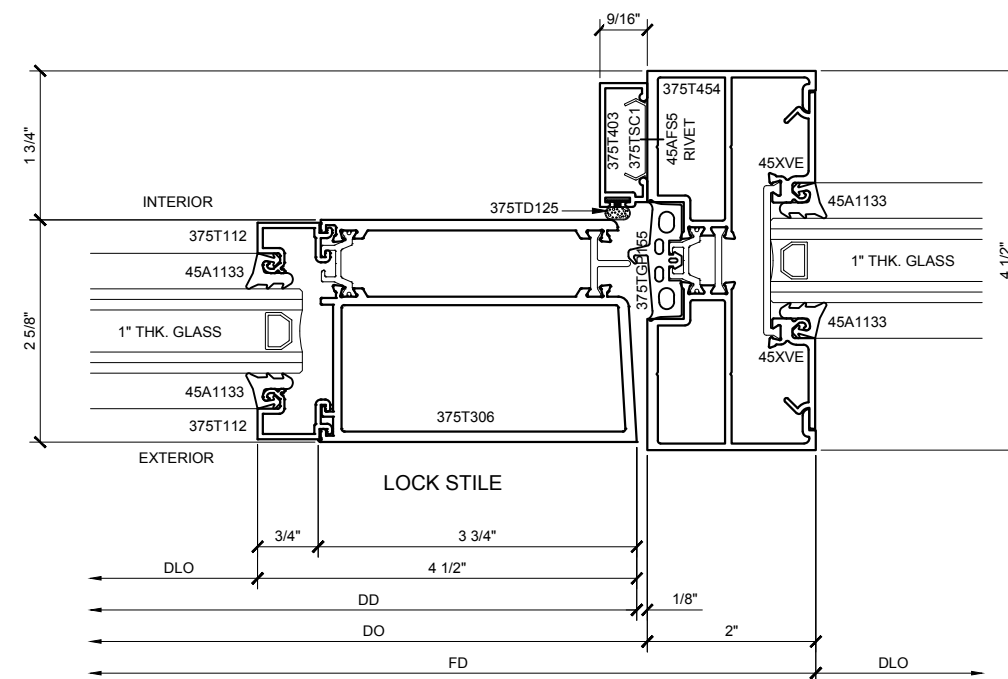


SECTION DETAIL @ MULLION / DOOR JAMB (18)



SECTION DETAIL @ VERTICAL MULLION (17)

SCALE: FULL SIZE



SECTION DETAIL @ MULLION / DOOR JAMB (19)

SCALE: FULL SIZE

ARCTIC FRONT SERIES 375-T DOOR DETAILS

SHOWN WITH SERIES 45X STOREFRONT SYSTEM

Revisions By:



2503 E. Vernon Avenue, Los Angeles, C.A 90058-1897
PH (800)-421-6144 FX: 800-587-7501 www.crlaurence.com

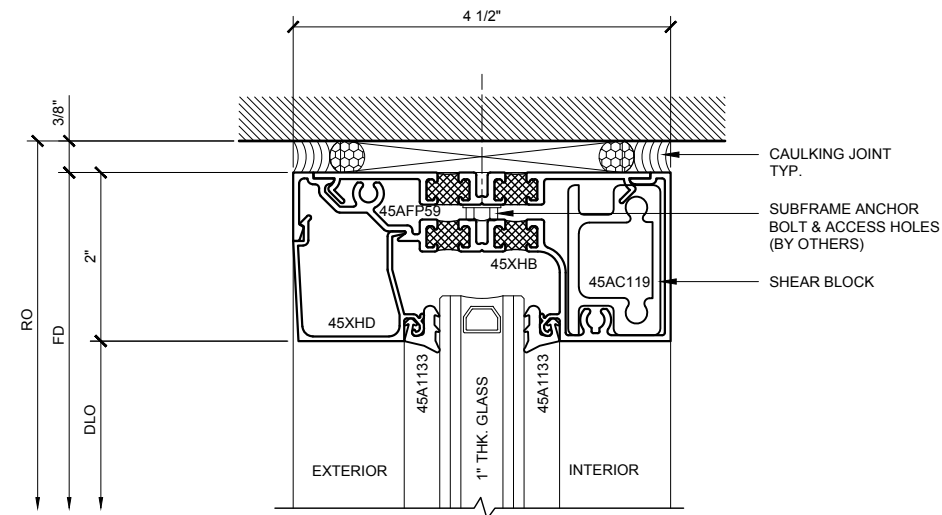
Description:

U.S. ALUMINUM
ARCTIC FRONT SERIES 375-T
DOOR SYSTEM

Drawn By:	RPD
Date:	02/20/16
Scale:	AS NOTED
File Name:	375-T.dwg
Sheet	

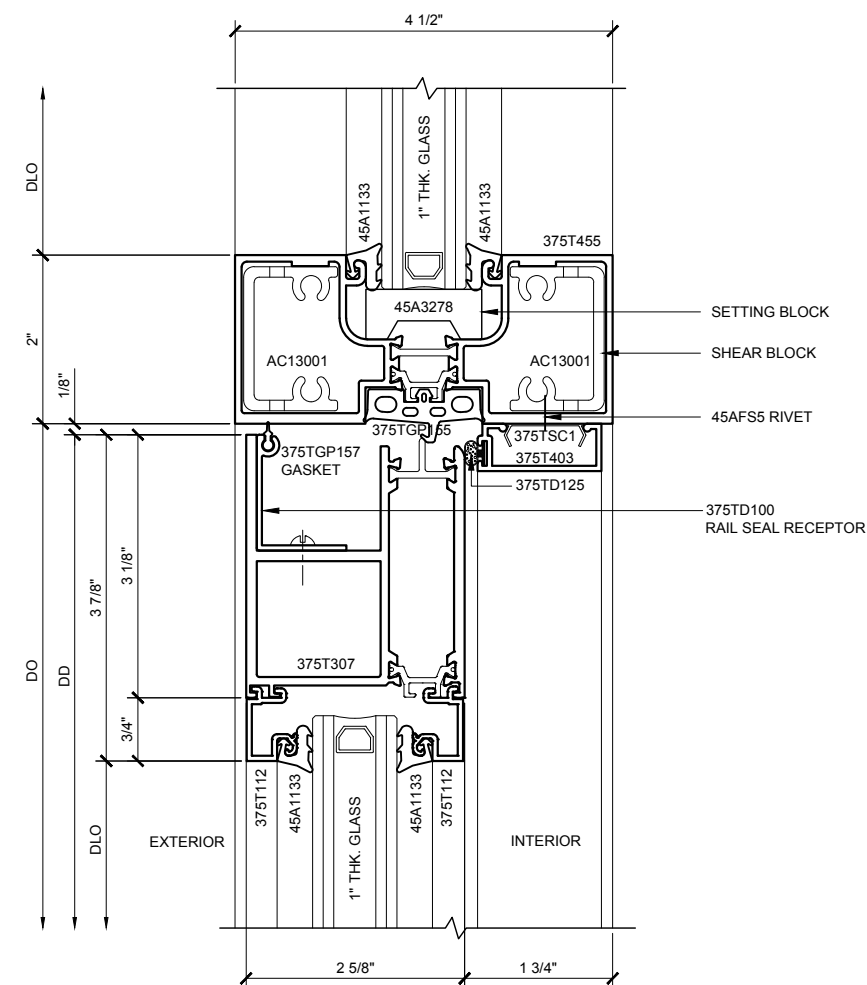
375-T-7

U.S. ALUMINUM ARCTIC FRONT SERIES 375-T DOOR SYSTEM



SECTION DETAIL @ TRANSOM (20)

SCALE: FULL SIZE



SECTION DETAIL @ DOOR HEAD / TRANSOM (21)

SCALE: FULL SIZE

ARCTIC FRONT SERIES 375-T DOOR DETAILS

SHOWN WITH SERIES 45X STOREFRONT SYSTEM

Revisions By:



2503 E. Vernon Avenue, Los Angeles, C.A 90058-1897
PH (800)-421-6144 FX: 800-587-7501 www.crlaurence.com

Description:

U.S. ALUMINUM
ARCTIC FRONT SERIES 375-T
DOOR SYSTEM

Drawn By:	RPD
Date:	02/20/16
Scale:	AS NOTED
File Name:	375-T.dwg

Sheet

375-T-8