



WINDOW WALLS

OS-2 OFFSET SYSTEM - OS175 & OS175SG SERIES (2" X 2" SYSTEM FOR 1/4" OR 3/8" GLASS)

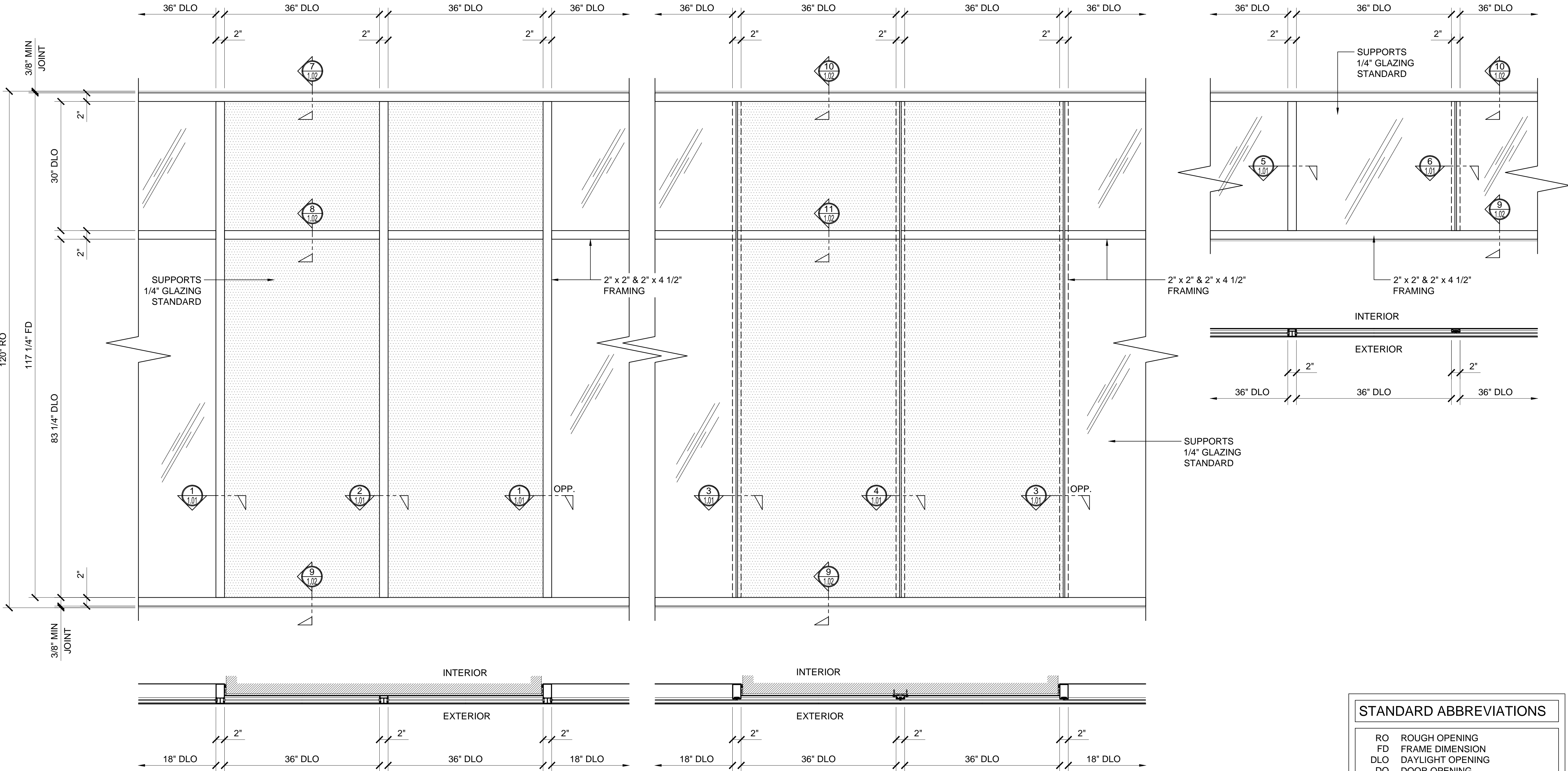
OS175 & OS175SG SERIES SPECIFICATIONS

Fabrication and installation labor costs have always been a decisive factor in selecting framing systems for storefront projects. U.S. Aluminum offers cost efficient versatile Offset Glazed Systems with clean lines and superb performance. Series SO175 & SO175SG may be interior / exterior glazed. A top load E.P.D.M. gasket is used to position and weatherseal the glass in the aluminum pocket. Offset Glazed.

- 2" x 2" frame
- 1/4" Glazing infill (SHOWN) Optional 3/8" glass is available
- Full range of accessory components
- Available in an array of architectural coatings and anodized finishes
- Anchor clips assembly
- Interior / Exterior Glazed

GLASS SIZING NOTE:
REFERENCE U.S. ALUMINUM
CATALOGS AND WEBSITE'S
LOAD CHARTS FOR SIZING
GUIDELINES.

1" = 1'-0"



STANDARD ABBREVIATIONS

- RO ROUGH OPENING
- FD FRAME DIMENSION
- DLO DAYLIGHT OPENING
- DO DOOR OPENING
- DD DOOR DIMENSION
- SMC SURFACE MOUNTED CLOSER
- OHCC OVERHEAD CONCEALED CLOSER

Revisions By:



Discription:
CRL US ALUMINUM
SERIES OS175 & OS175SG
WINDOW WALLS
FOR 1/4" & 3/8" GLASS

Drawn By: TMG

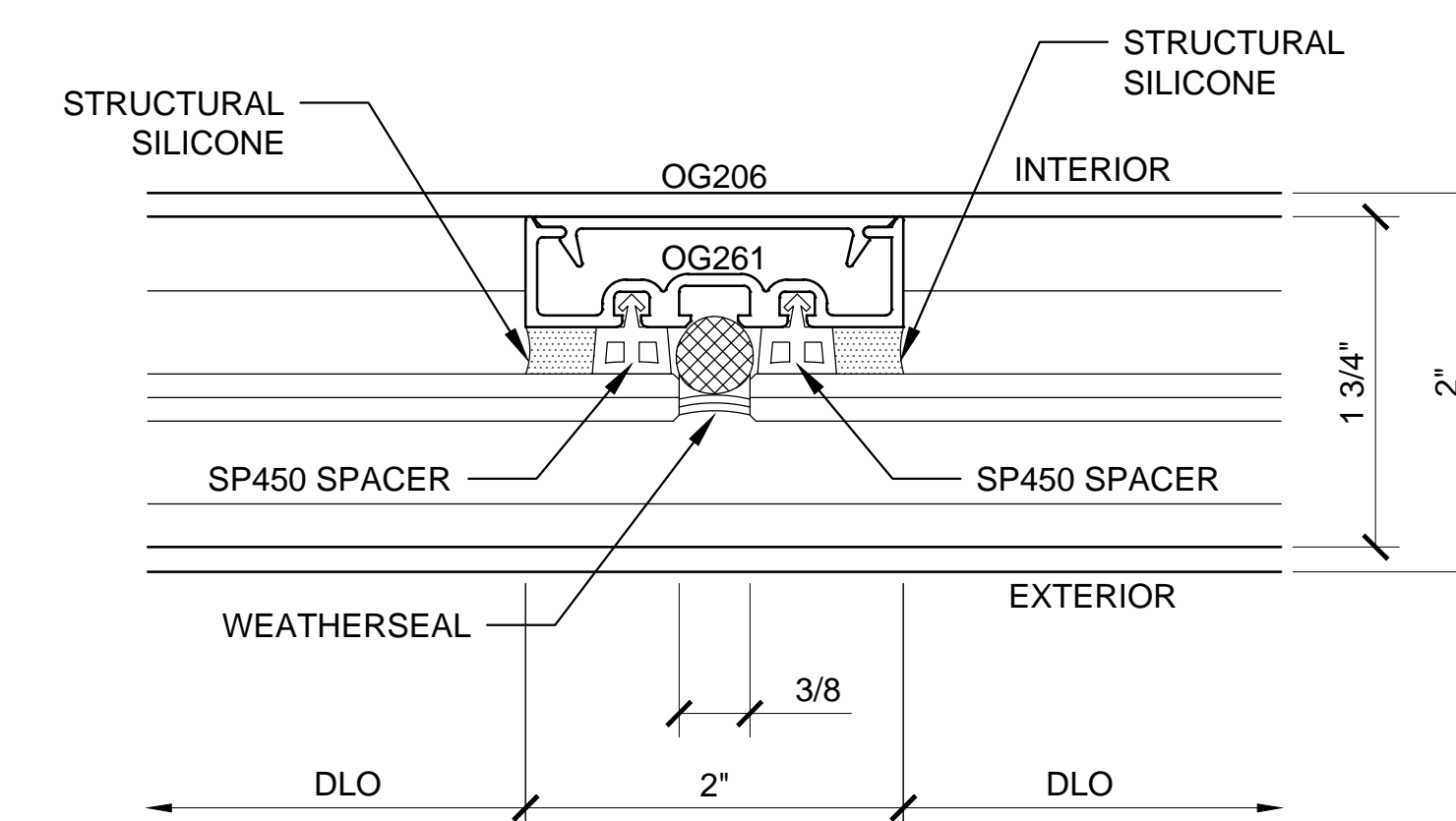
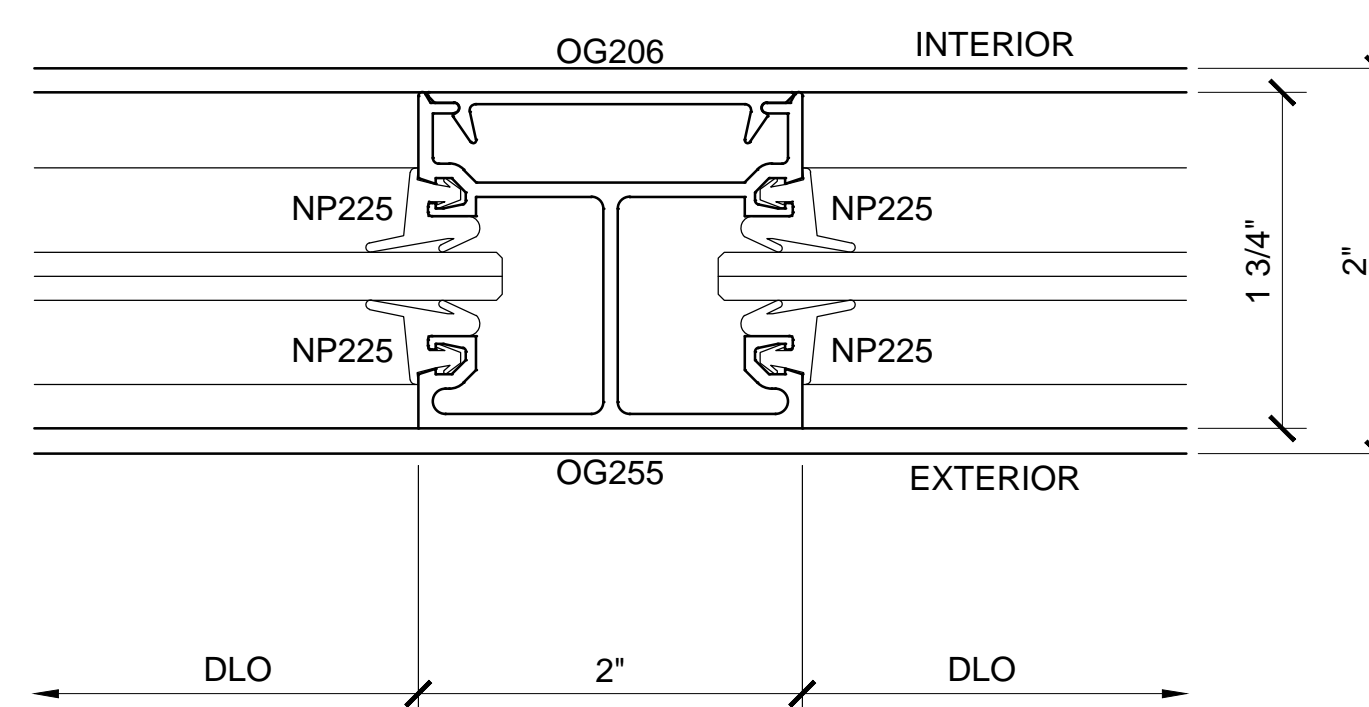
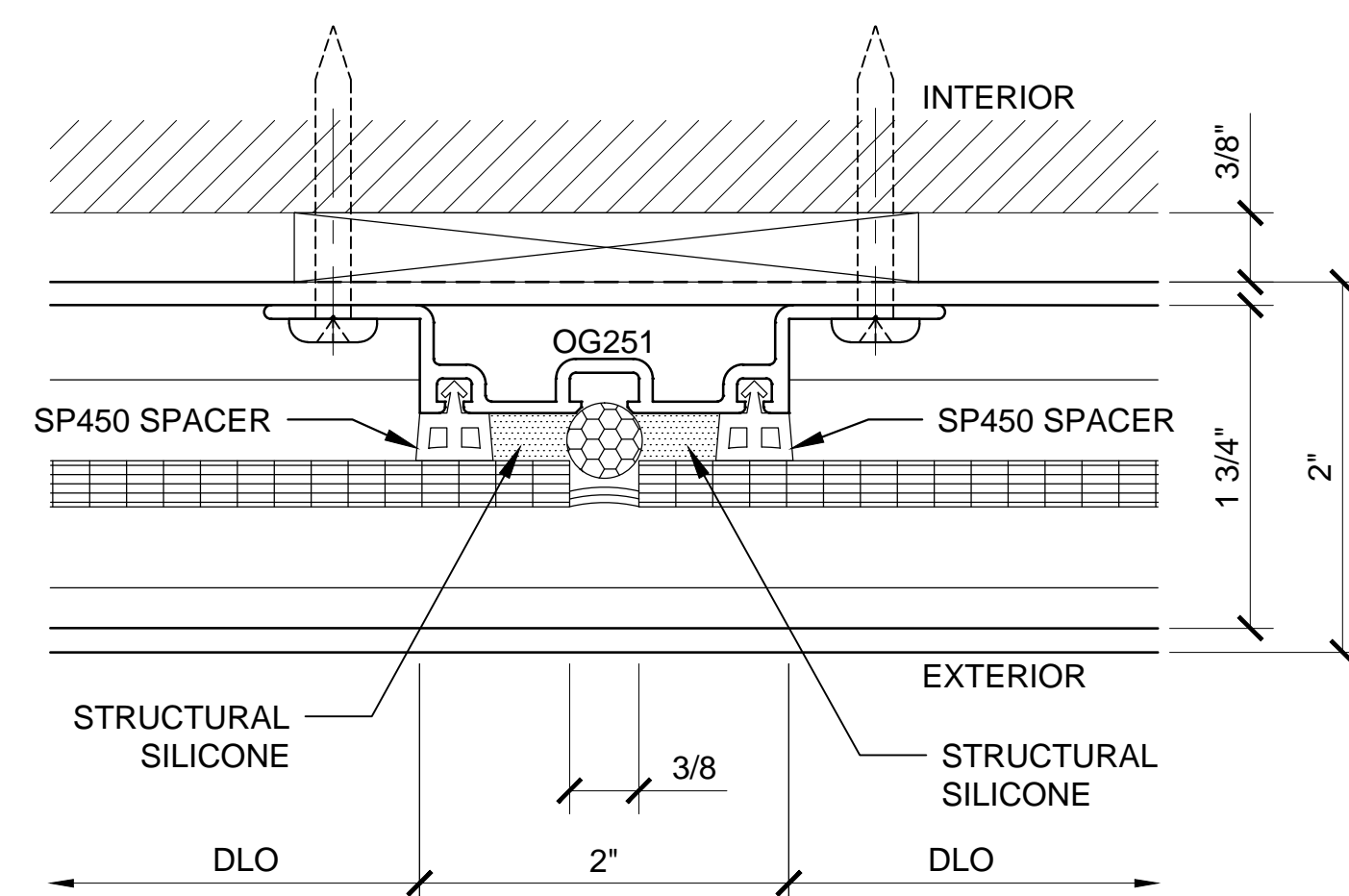
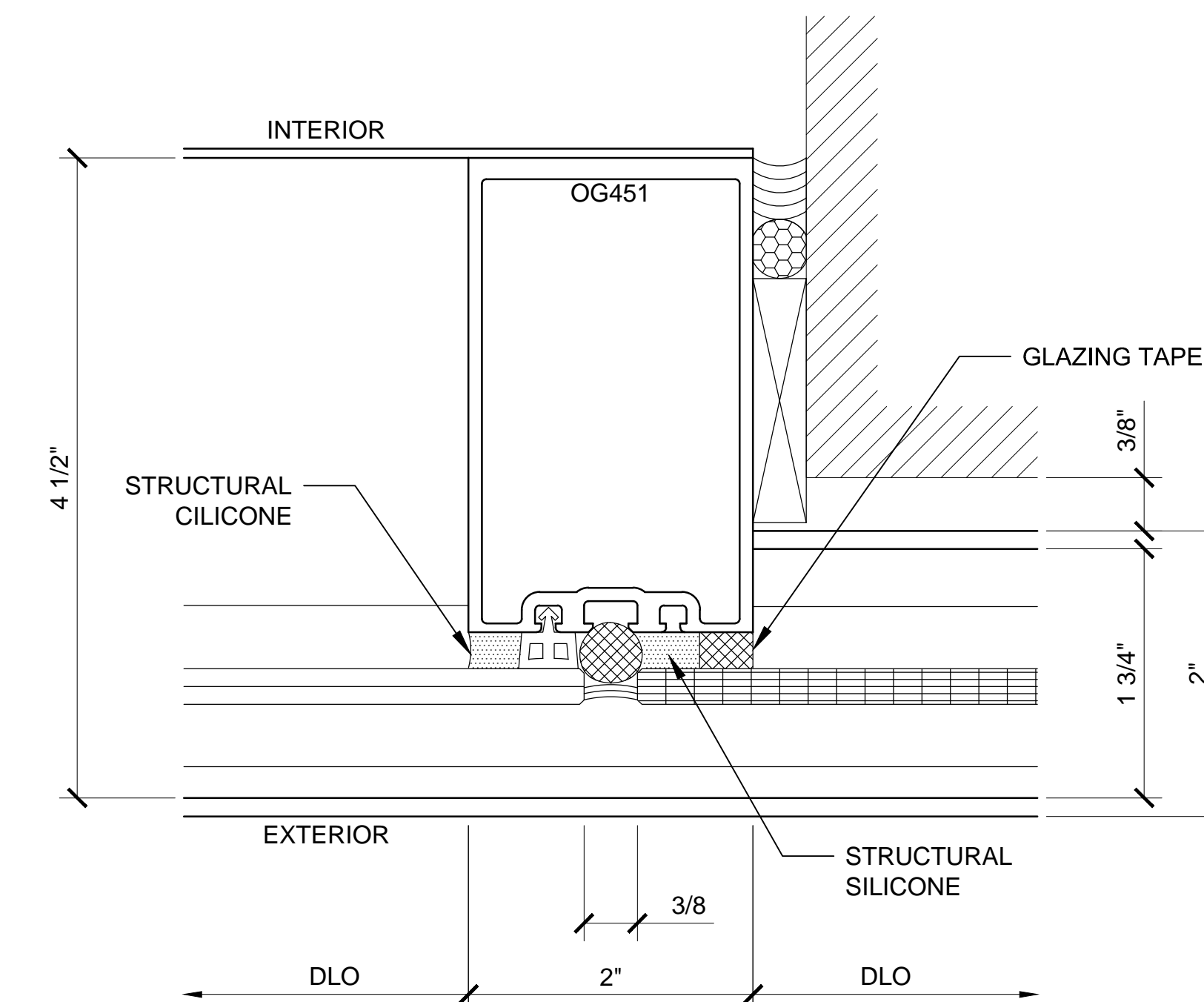
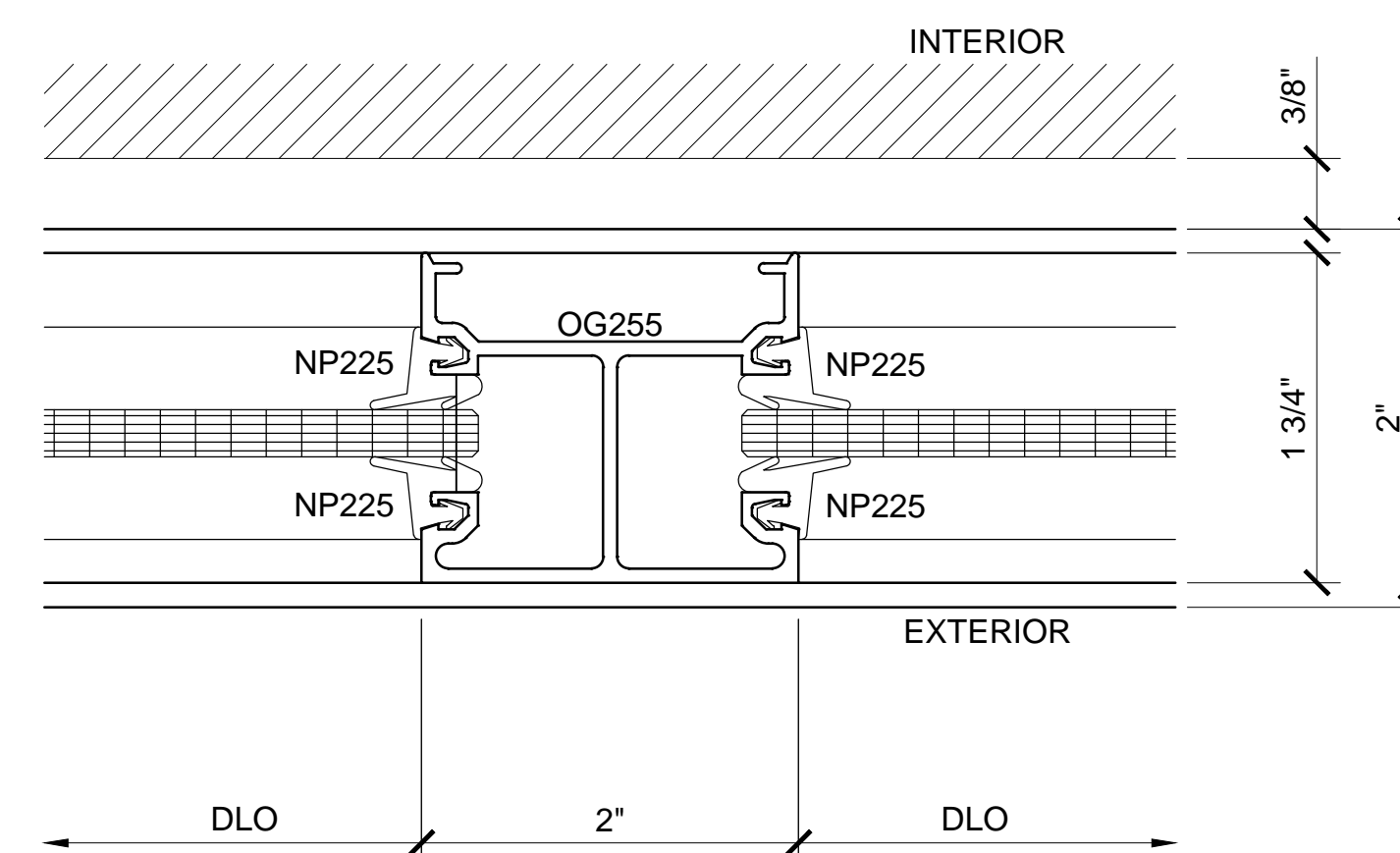
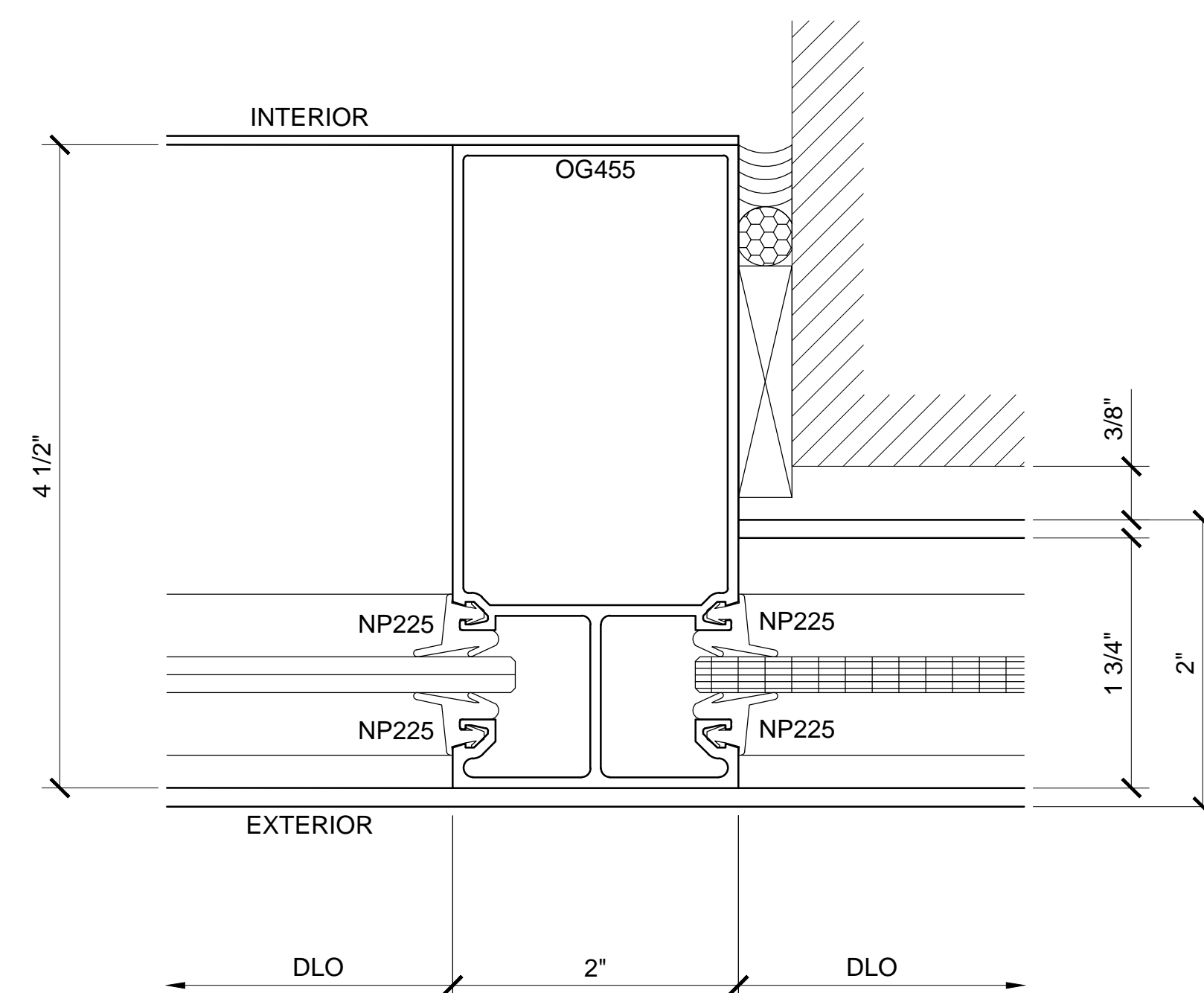
Date: 04/15/15

Scale: AS NOTED

File Name:

OS175/OS175SG.dwg

Sheet



NOTE:
THIS DETAIL IS ONLY USED WHEN
STRUCTURAL SILICONE SEALANT
CAN BE APPLIED FROM INTERIOR.
(VERIFY FIELD CONDITION)

Discription:

Description:
CRL US ALUMINUM
SERIES OS175 & OS175SG
WINDOW WALLS
FOR 1/4" & 3/8" GLASS

Drawn By: TMG

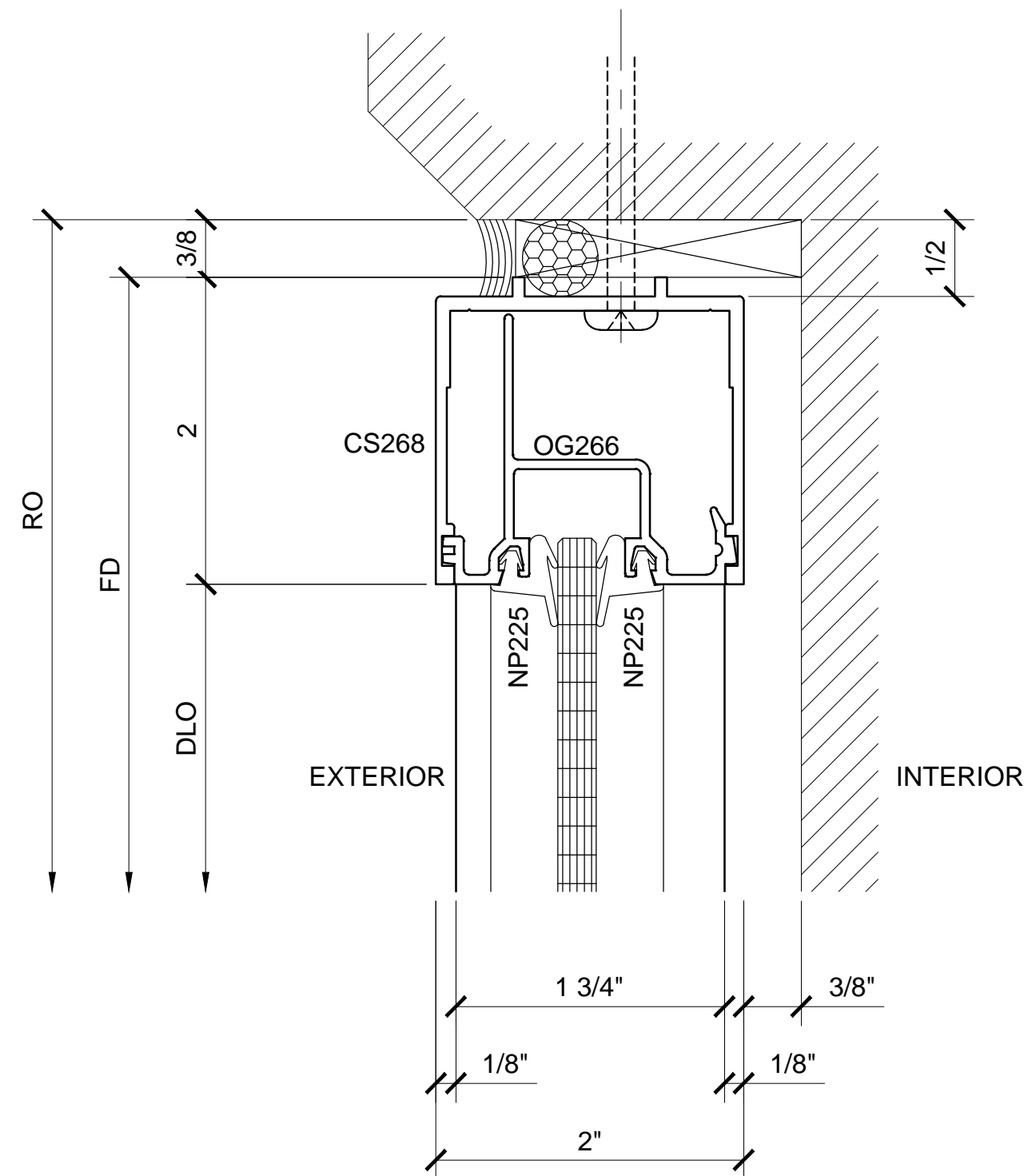
Date: 04/15/15

Scale: AS NOTED

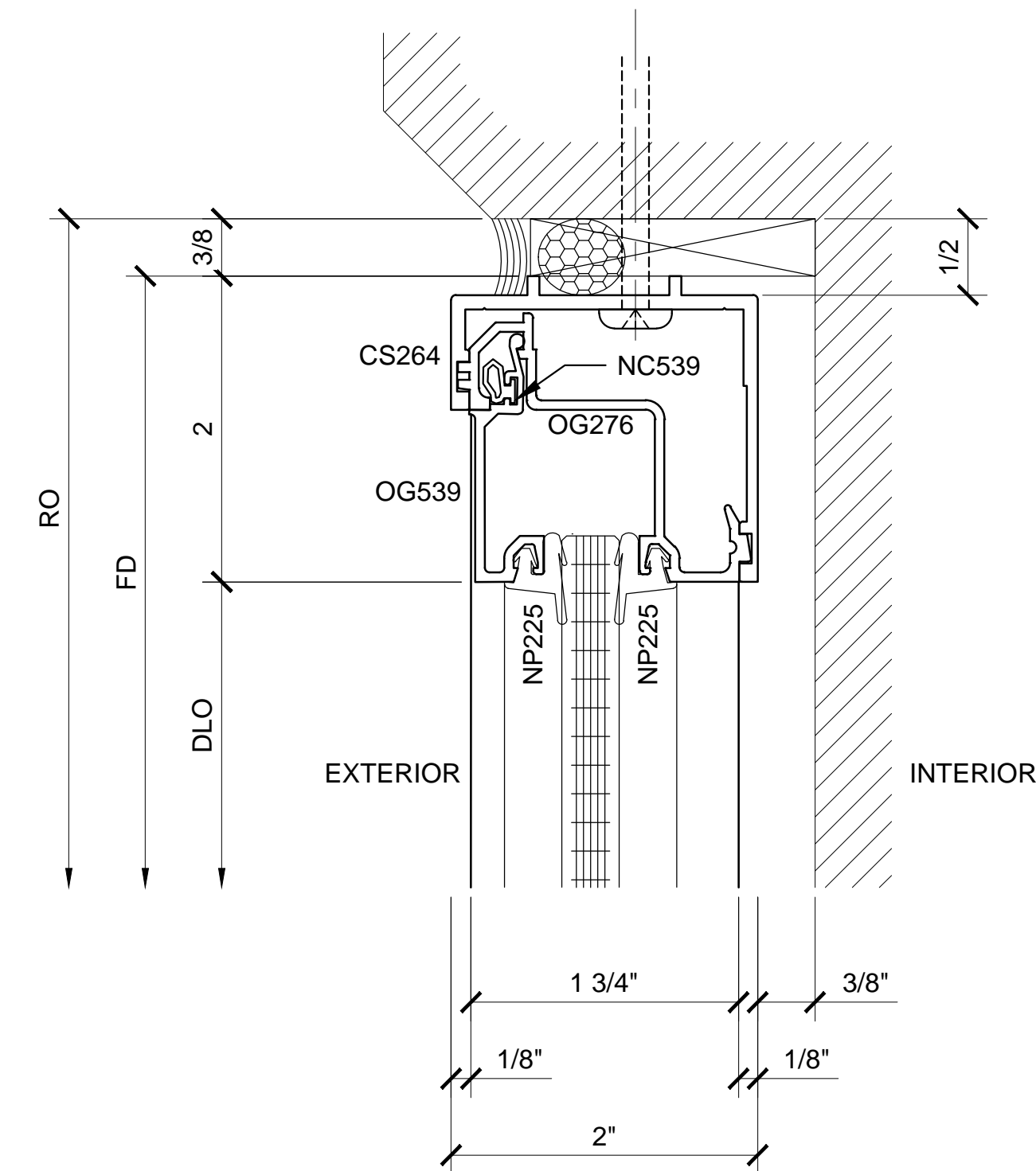
File Name:

OS175/OS175SG.dwg

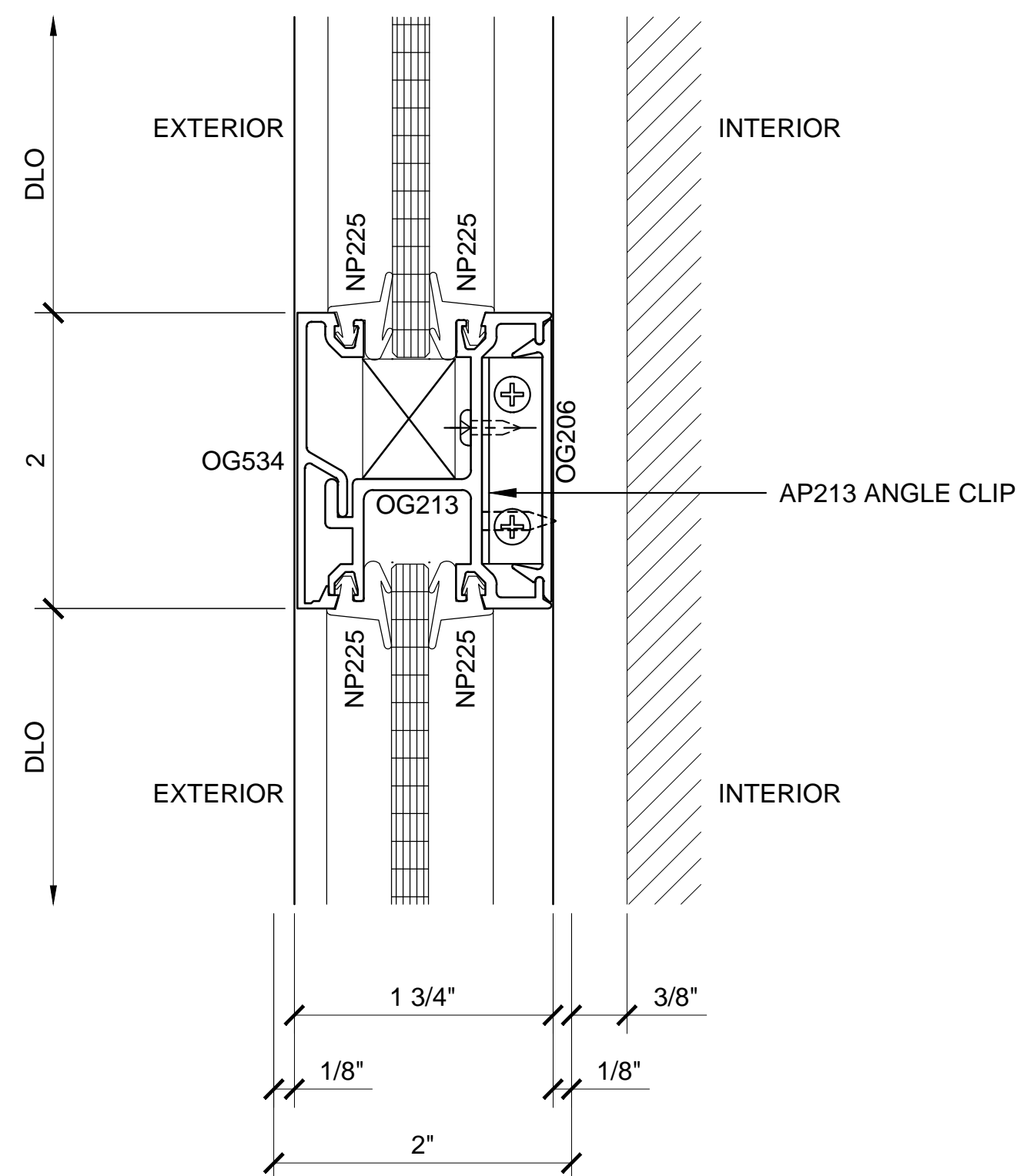
Sheet



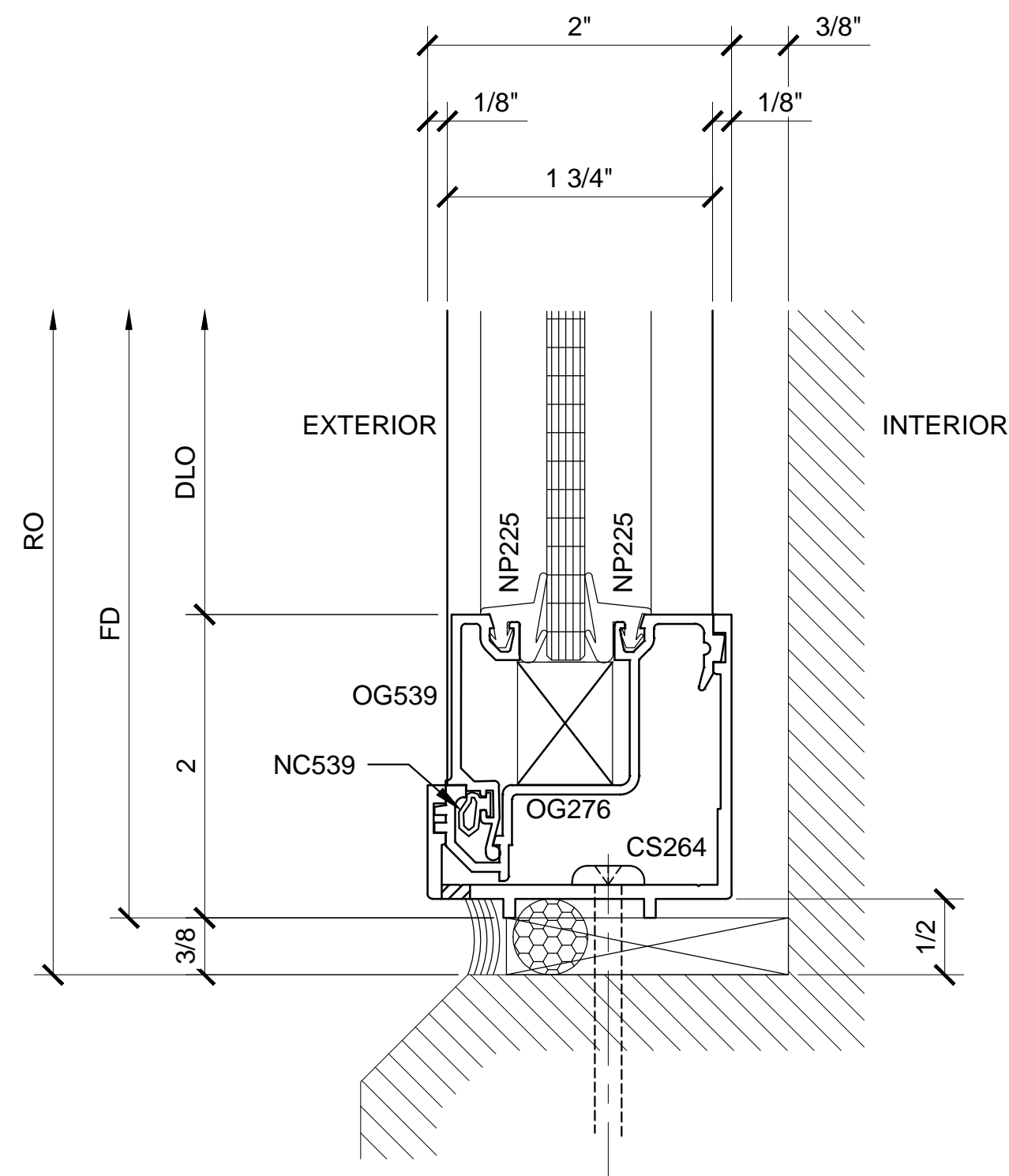
7 SECTION DETAIL AT HEAD
 ARCH REF: N/A 1'-0"=1'-0"



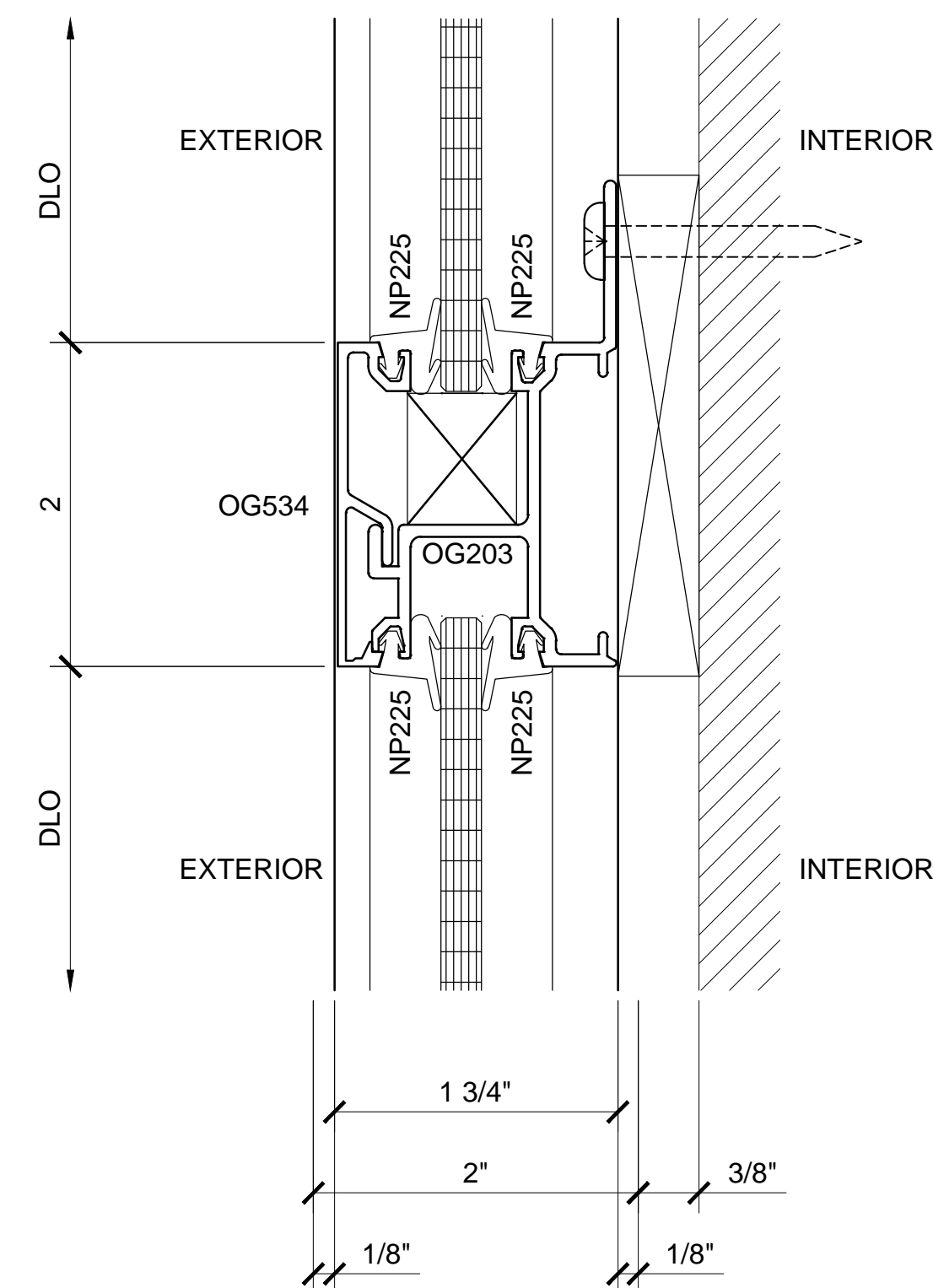
10 SECTION DETAIL AT HEAD
 ARCH REF: N/A 1'-0"=1'-0"



8 SECTION DETAIL AT INTERMEDIATE HORIZONTAL
 ARCH REF: N/A 1'-0"=1'-0"



9 SECTION DETAIL AT SILL
 ARCH REF: N/A 1'-0"=1'-0"



11 SECTION DETAIL AT INTERMEDIATE HORIZONTAL
 ARCH REF: N/A 1'-0"=1'-0"