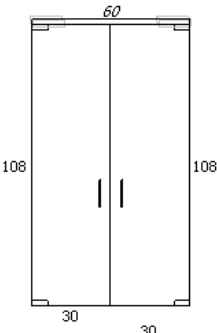




STOREFRONTS ONLINE FEATURES

New Features Update 02/16/09

1) The vast majority of quote requests submitted through Storefronts Online now return pricing to you in **just seconds** and are followed up with a quote sent to you via fax and/or email minutes later. These quotes are completely generated through Storefronts Online. If you would like someone in Technical sales to review your quote(s) prior to you submitting it to your customer, just contact us and we will be glad to review it for you.

Storefront	2 pnl Clear	View Storefront
		Installation
		Glass Order
		Hardware
		Door Layout
		Multiple Reports BOM
		Quote/Order Hardware
Quote	400016	
Glass	\$303.68	
Fittings	\$667.02	
Total	\$970.70	

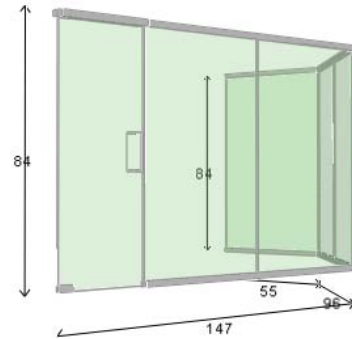
2) You can now order your hardware right from Storefronts Online! Just click on the 'Order Hardware' button, verify your shipping information, and Storefronts Online will submit your quoted storefront as an order. Our Technical Sales staff will review your order and either release it to production or call you to discuss anything we might have found as questionable or unclear.

Hardware - Job Name 'AGSEOL FEATURES'		
Shipping Information		
Use Shipping Info From:		
<input type="radio"/> This Quote <input checked="" type="radio"/> Customer Account		
Company Name	TEST TOOL CO	
Contact Name	BO-BO CHOPS	
Email Address		
Address 1	2503 E VERNON AVE	
Address 2	TEST ONLY DO NOT SHIP	
City	State	Zip
LOS ANGELES	CA	90058
PO Number		
Ship Via	UPS Ground	
Payment Terms	COD-CUSTOMER CHECK O.K.	
<input type="button" value="OK"/> <input type="button" value="Cancel"/>		
<input type="button" value="Order Hardware"/>		

3) You can also add additional CRL products that you might need to complete your project. Just click on the 'Add Catalog Product' button, add the items you need, click on 'Save', and then 'Order Hardware', its that simple.

Order Qty	Calc. Qty	Product Name	Category	Option	Ac
4	4	4" Tapered Door Rail w/o Loc	Door Rail	DR4TBS12S (35-3/4")	Br
2	2	CRL8010AS	OHCC Closer Arm	CRL8010AS	N/A
2	2	CRL8010ADJ	Bottom Pivot Set	CRL8010ADJ	N/A
2	2	CRL9160 Med. 90 HO	OHCC Closer	CRL9160	N/A
1	1	4" Header, Dbl. Door Only	Double Door Header	DCH48SD (72")	Br
100	0	51S	<Catalog Product>	CRL SINGLE EDGE RAZOR BLADE	N/A
7	0	33SC	<Catalog Product>	CLEAR CRL SILICONE CTG.	N/A

4) The 3D image is now truly 3D, and can be manipulated to give you the exact presentation you are looking for. You can even operate the doors making an impressive demonstration.



5) You have the ability to split out doors and sidelites in a single entry, giving you the ability to specify different hardware on each panel if needed.

Door Top	Left Door
Rail	4" Tapered Door Rail w/ Lock
Lock	777S
Cylinder	Cylinder Out / Thumbturn In
	Right Door
Rail	4" Tapered Door Rail w/o Lock

Above Sidelites	All Other Sidelites
Channel	UC Regular U-Channel
End Cap By Door	U-Channel End Cap
	Return (1) <input type="button" value="v"/>
Header	4" Header, Glazing Pocket Only
Rail	4" Tapered Sidelite Rail
End Cap By Door	SREC4T

6) We have expanded the hardware database to include:

1. All of our handles including Access Control Handles. Proper handing and swing of the doors must be selected in order to access these hardware selections.

Handle	Combined Doors
Style	Access Control Custom Handles Both Different
Left ACH Style	PA Panic Access Handle. Color Brushed Stainless
Interior	DB Deadbolt Handle. Height 42"
Exterior	DBR Deadbolt w/ Roller Latch. Length 27-1/2"
Key Device	DH Dummy Handle.
Right ACH Style	DH Dummy Handle.
Interior	EG Electronic Egress Control Handle. Brushed Stainless
Exterior	PA Panic Access Handle.
Key Device	ACH 100 Horizontal Height 42"
	ACH A (Standard) Horizontal Length 27-1/2"
	KAD Cylinder/Cylinder KAD Offset 10-1/2"

- 2. All of our magnetic locks as well as prep options for locks supplied by others.

Door Top	Both Doors		
Rail	4" Square Rail w/ Mag Lock.	Color	Brushed
Insert/Arm	CRL9040TDF	Color	N/A
Lock	SAM1224 Door Armature	Color	N/A
Door Base	Both Doors		
Rail	SAM1224 Door Armature		
Insert/Arm	SDC1562 Door Armature		
	GF3000 Door Armature		
Below Door	Both Doors		
Spindle/Pivot	390PLUS Armature Plate		
	280PLUS Armature		
	390PLUS Armature Plate EG		
	Customer's Door Armature		
Handle	Both Doors		
	GF3000BRD Bottom Rail Shear Lock		

- 3. All of our center housings with proper handing. Proper handing and swing of the doors must be selected to ensure properly handed housing are generated.

Below Door	Both Doors		
Handle	Combined Doors		
Style	Latch Only	Latch Right	
Right Latch	4"X10" Hook Throw Ctr. Lock	Color	Brushed
Vertical Positioning	4"X10" Hook Throw Ctr. Lock		
Keeper	4"X10" Long Throw Ctr. Lock		
	Custom 4"x10" Deadthrow Lock		
Door Surrounds	Combined Doors		
Horizontal Seals	Custom 6" x 10 Centerlock Customer to Specify		
	DE4100 One Point Lock		
	PTH311 Latch w/ Lock		
	PTH312 Passage Latch		

- 4. Floor and overhead closer selection now includes all CRL stocked closers and prep options for closers supplied by others.

Above Door	Combined Doors		
Header	4" Header, Dbl. Door Only	Color	Brushed
Left Closer	CRL9160 Med. 90 HO	Color	N/A
Right Closer	CRL9970 A.D.A. 8.5 Lb. 105° Hold Open		
	CRL9972 A.D.A. 8.5 Lb. 105° No Hold Open		
Door Top	Both Doors		
Rail	2033017EXT 105° NHO Jackson Adj. closer		
	2033018EXT 105° HO Jackson Adj. closer		
Door Base	Both Doors		
Rail	20114M105HORD 105 HO Jackson Gr1 ext spindle		
Insert/Arm	20114M105NHORD 105 NHO Jackson Gr1 ext spindle		
	20114M90HORD 90 HO Jackson Gr1 ext spindle		
	20114M90NHORD 90 NHO Jackson Gr1 ext spindle		
Below Door	Both Doors		

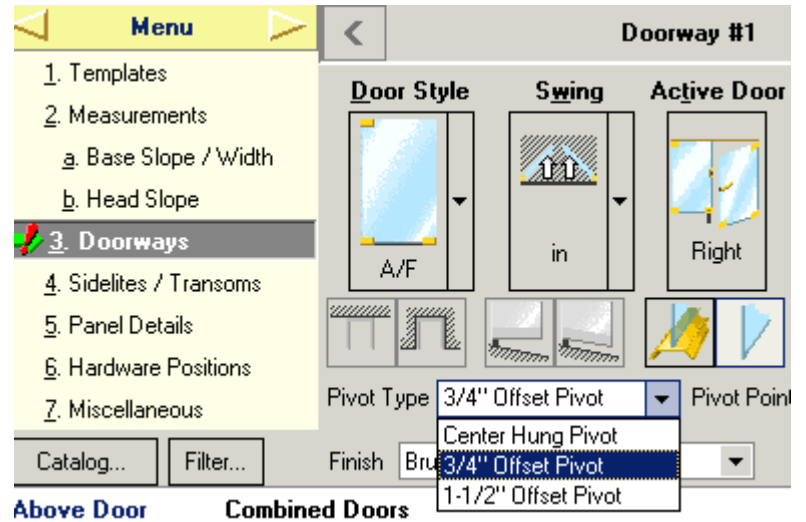
- 5. All of our door and sidelite rails including Low Profile. Also additional finishes of Oil Rubbed Brass and Paint

Door Top	Both Doors		
Rail	4" Tapered Door Rail w/o Lock	Color	Brushed
Door Base	Both Doors		
Rail	2-5/16" Square Door Rail w/o Lock		
Insert/Arm	ORB 10" Sqr. Door Rail		
	ORB 2-5/16" Square Door Rail		
	ORB 4" Sqr. Door Rail		
Below Door	Both Doors		
	ORB 4" Tpr. Door Rail		
	ORB 6" Sqr. Door Rail		
Handle	Both Doors		
Style	PNT 10" Sqr. Door Rail		
	PNT 2-5/16" Square Door Rail		

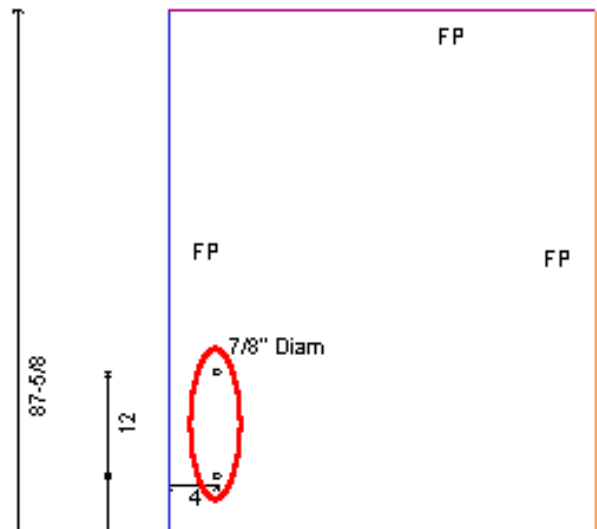
- 6. All of our patch fittings including our new curved and offset fittings



- 7. 3/4" and 1-1/2" offset pivots, proper handing and swing must be selected to ensure correct hardware selection



- 7) Hole sizes now accommodate minimums for 3/4" glass thickness for all handles, notches, and cutouts.



Previous Feature Updates

01/02/2008

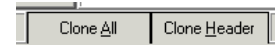
1) There are now expanded options in the **Customize Business Details** screen. This screen can be accessed by the "-01" user from the **Storefront List** screen by going to **Maintain / Administration / Site**. This feature now allows for the designation of multiple branch locations in a single database. For example, the "- 01" user may have their branch in Los Angeles, but the same company has a "- 02" user in Miami. Now the different log-ins can have their own address, phone, fax and E-mail on their printed pages.

2) Your company logo can appear on any of the printed reports. This feature also is activated in the **Customize Business Details** screen and the logo location is controlled Maintain / Reports. From here you can select which reports will show your logo as well as the position of the logo on the page.



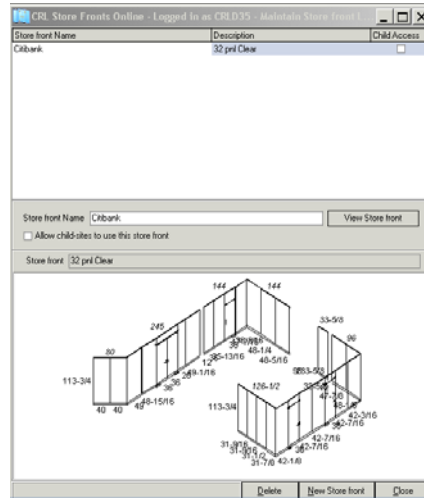
3) In the **Storefronts List** screen, you can search through your database of projects using several filters to make finding a particular project a snap.

4) Also new to the **Storefronts List** screen is the ability to 'clone', or copy, an existing project. You can either 'clone all' meaning the entire project, great for quoting multiple customers; or 'clone header' meaning the Storefront List screen information only, great for doing multiple entries for the same client.

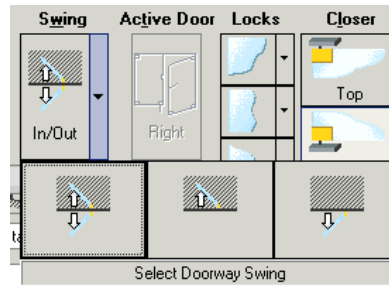
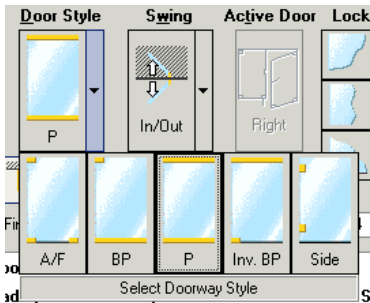


5) Perhaps the most powerful tool of all has also been added to the **Storefronts List** screen, the ability to request a quote of the storefronts you create. Just highlight the storefront you need a quote on, click on **'Quote/Order Hardware'** button to get to this screen, then click on **'Request Quote'** and follow the screen prompts and your request will be sent to us and should be back to you with 24 hours.

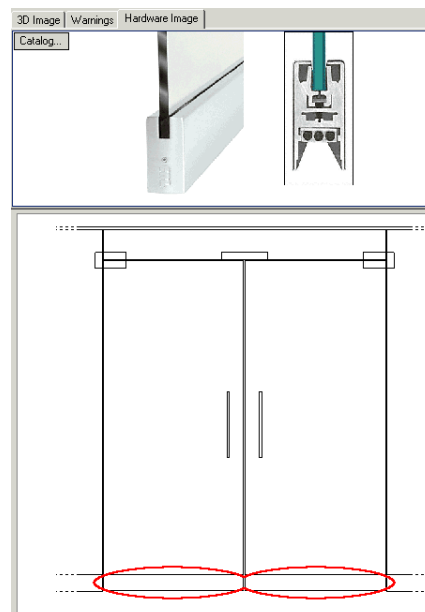
6) We have added a **'library'** feature that allows you to create and save storefronts as templates for future use, thus allowing you to be able to quote projects even faster. While on the **Storefront List** screen go to **Maintain / Storefront Library** to create and add a storefront to the library.



7) On the **Doorways** screen, you now have an expanded selection of door styles to choose from and the ability to specify handing of the doors, critical to certain types of hardware.



8) You can now view our web site offering of any of the parts you have selected on your storefront. Simply select the part you want to see in the **Doorways or Sidelites / Transoms** screen and then click on the **'Catalog'** button found in the 'Hardware Image' box. You will be automatically taken to that part on our web site. From there you can move around the site enjoying all the features that are typically available to you or return back to AGSFOL.



9) We have updated the Installation Sheet to now show a plan view of the storefront. We believe this to be a useful tool for you when communicating with your customers on more complex openings.

