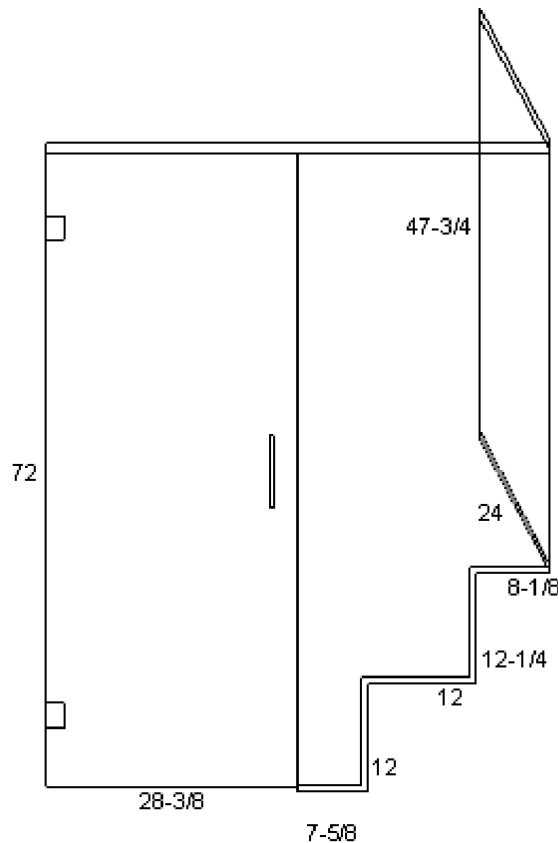


SHOWERS ONLINE UPGRADES

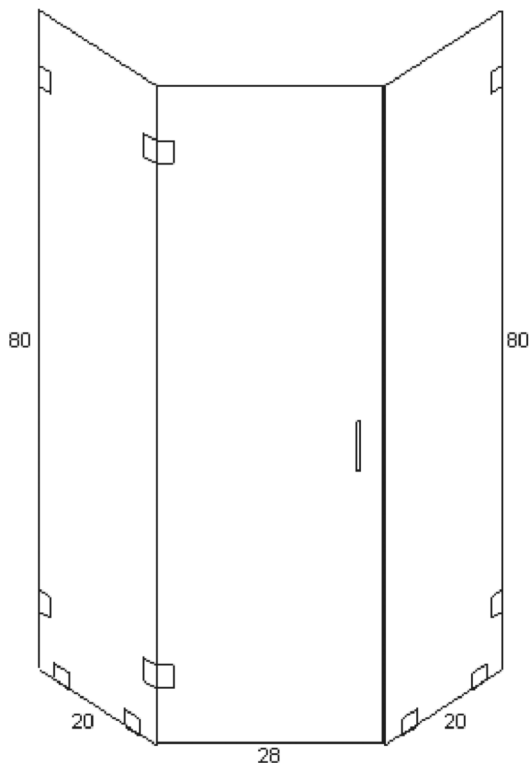
- Now Supports Double Notches in Fixed Panels
- Header-Free Guidelines Allow for Doors to Hinge From a Fixed Panel with No Top Support Under Certain Criteria
- Through Glass Mounted Support Bar Fabrication Recognized
- All Support Bars are Animated in 3D Views
- Utilization of Hand Polishing Fees Now Available

C.R.Laurence Co. Inc. is pleased to announce our latest upgrades to the Showers Online Design and Glass Sizing Program. Periodically we make upgrades to this already firmly established program, in an effort to provide ever-improving quality to our valued subscribers. Please review the following upgrades recently implemented at no extra cost to subscribers.

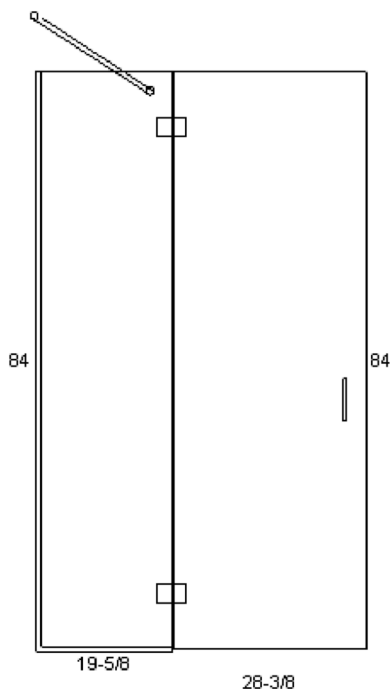
1) Double Notches are here! The ability to accommodate stair-step, or double notches in fixed panels is now available. This designer's choice of panel type has been rising in popularity over the last few years. There were numerous "work-around" methods to get the correct sizes and dimensioning of fixed panels with double notches. Not only are double notches now available, Triple Notches can be performed as well!



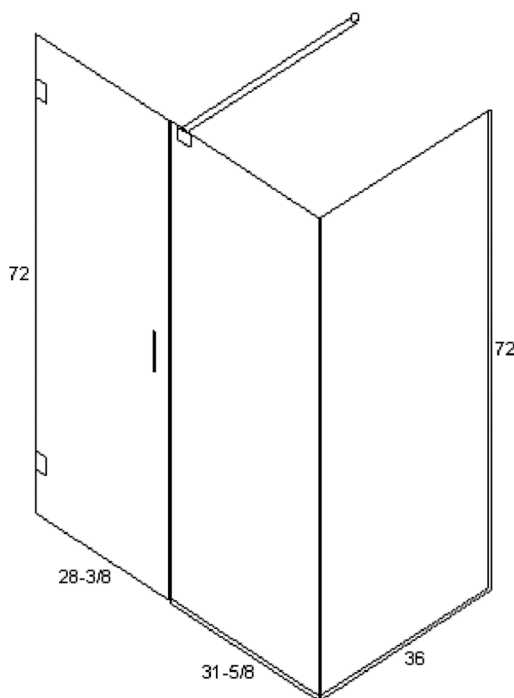
2) C.R.Laurence engineered Header-Free Criteria are now integrated into Showers Online. Enclosures that use glass-to-glass hinges without top support can now be saved in Showers Online without receiving a warning, provided the criteria has been met. If a shower has glass-to-glass hinges and no top support, Showers Online will guide the user to the correct product choices, and provide accurate limitations to this popular enclosure design. For a complete picture of the Header-Free Criteria, please click [here](#).



3) Our Through-Glass Mounted Support Bar (SUP135) is now recognized as a fitting that provides valid top support when selected from the "Header" fitting category. Both wall mount and ceiling mount options are available for fixed panels adjacent to a door. A maximum width calculation has been figured into the wall mounted option, to assure a safe installation. Both the wall mount and ceiling mount versions are correctly depicted in the 3D view, and the animated 3D rendering of the enclosure.



4) Glass-to-glass and wall mount slip-over-the-top support bars are now drawn in the 3D view and 3D renderings. Drawings will accurately display bars, so an end user can visualize how their enclosure will look.



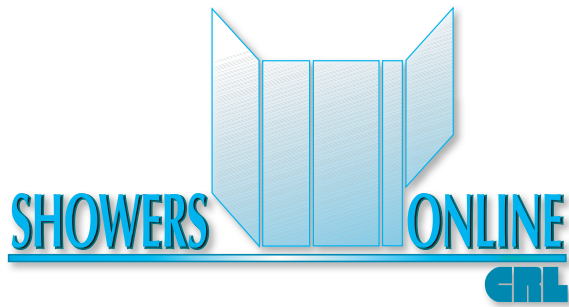
5) A special “hand polish” processing fee can be utilized when a user has a notched fixed panel using clamps. The glass processing on a hand polish is more costly than standard methods of polishing. Now this process can be labeled on the glass edge that requires it, and the correct cost can be calculated in the glass pricing.

Sincerely,

A handwritten signature in black ink that reads "Danny Donahue". The signature is fluid and cursive.

Danny Donahue

Director, Frameless Shower Hardware
C.R. Laurence Co. Inc.
(800) 421-6144 ext 7741
danny_donahue@crlaurence.com



SHOWERS ONLINE UPGRADES

- Now Supports Hydroslide Sliding Enclosures
- New 3D View Brings Dynamic Color Images to Quote Page
- Default Hardware Packages Can Be Loaded, Utilizing Your Most Popular Items – One Button And Your Hardware Is Complete!
- Expanded DXF Export Feature Affords Users Multiple Options for Their CNC Fabrication Needs

C.R. Laurence Company is pleased to announce the latest in a continuing series of upgrades to Showers Online. This program has proven to be an invaluable asset to many shower hardware customers, and is the flagship to our suite of online technical services. Periodically we make upgrades to this already firmly established program, in an effort to provide ever-improving service to our valued subscribers. What follows is a brief description of the most recent upgrades implemented at no extra charge to subscribers.

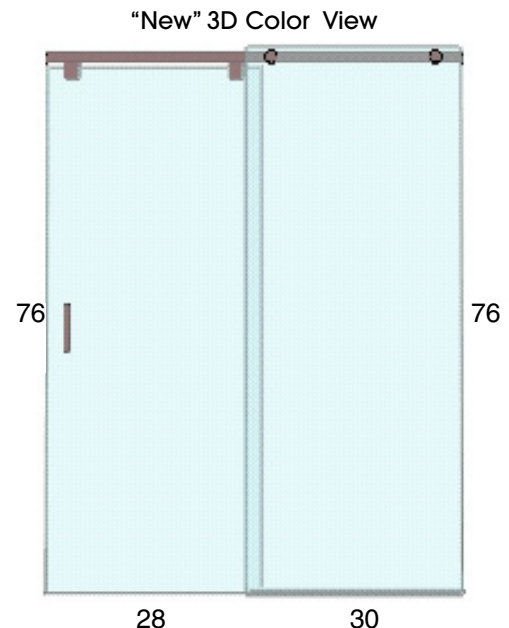
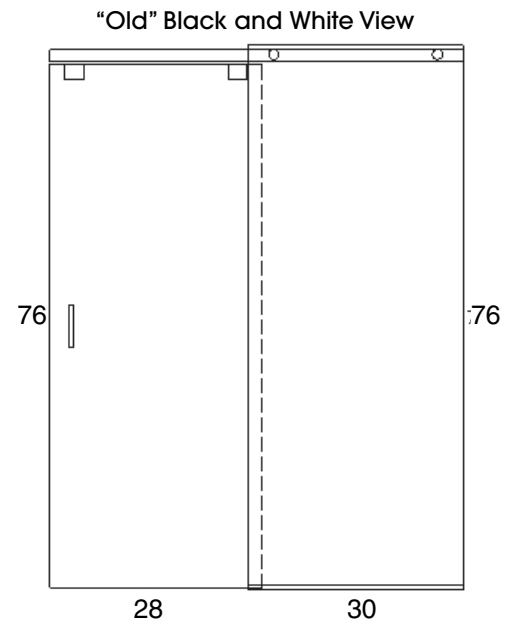
1) Our Hydroslide Sliding Shower Door System is now integrated into Showers Online. Hydroslide is one of the most exciting new products introduced in recent years. Users of Showers Online asked for it's inclusion into the program and we listened. From a standard single sliding door and fixed panel opening, to more complex 90-degree return panel applications, Hydroslide is a unique and beautiful addition to Showers Online.

2) All Showers Online subscribers are now afforded a fourth seat at no extra charge. C.R. Laurence never raised the price of Showers Online in the over six years since it's inception, and now we have expanded the number of concurrent users.

3) A new 3D Color View allows a user to view their enclosure from any angle and save the image for use on their Quote Report. The Quote Report can be saved as a PDF file and sent via e-mail. The new 3D Color View adds an extra benefit to an already inclusive quoting format.

4) Glass and hardware coloration can be maintained by Showers Online subscribers. By adding color to the glass and hardware fittings, a user can have their Quote Report "pop" to prospective customers. The Quote Report is an important feature many subscribers utilize on a daily basis.

5) A feature called Hardware Package has been created to make the hardware selection process even easier. Here's how it works: A user creates a number of standard items they use on a regular basis and labels this group as a certain "Package". For example, if a subscriber tends to use Vienna Hinges, a BM Series Pull, U-Channel, and a P990WS Bottom Sweep, these items can be put together as a specific Package. After entering the void dimensions, the user simply



selects the Hardware Package of their choice and Showers Online will populate the hardware list with all the fittings in that Package. Instead of individually selecting each of these components, the user presses one button and all the components have been selected. The number of individual Packages that can be assembled is up to the user.



6) The ability for Showers Online to produce and export .DXF file types was implemented a few months ago. We have further expanded the export options to allow for three different file configurations: A) Finished sizes of the glass, including cut-outs; B) Block sizes of the glass without cut-outs. Block size refers to the size of the glass prior to polishing edgework. Users can set their own values of how much glass is removed in the polishing process; C) Block sizes with cut-outs. All of these .DXF options add value for fabricators who use CNC technology for the fabrication of their glass.

There are many other “behind the scenes” upgrades that have been included to make the program run to it’s maximum efficiency. We at CRL always strive to meet or exceed our customer’s expectations. With this new and exciting release, we are certain we have once again, raised the level of Showers Online. We look forward to continuing in this upward direction.

Sincerely,

Danny Donahue

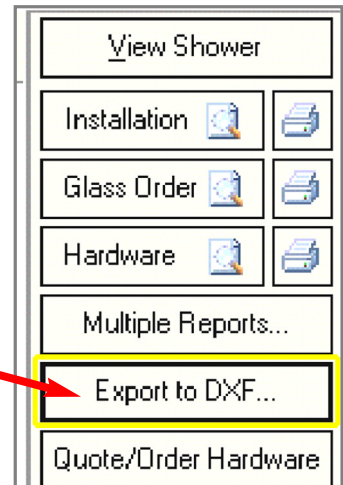
Director, Frameless Shower Hardware
C.R. Laurence Co. Inc.
(800) 421-6144 ext 7741
danny_donahue@crlaurence.com

SHOWERS ONLINE UPGRADES

- **Export DXF Glass Cutting Files**
- **Add Any CRL Catalog Item to a Completed Quote When Ordering**
- **New Branding Feature: Your Company Logo Can Appear on All Pages**
- **Can Now Process Bank Card Orders**

Once again the Showers Online program has evolved into a better tool to enhance your business. In addition to the visible upgrades shown below, there have been numerous “behind the scenes” additions to the functionality of this application.

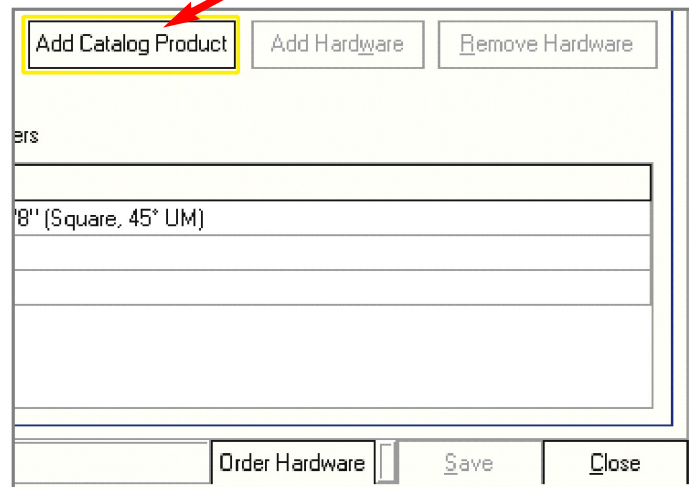
**CLICK
HERE**



1) Showers Online now exports DXF files for automated cutting machines. Simply press the Export to DXF button on the shower list screen and save these valuable files. Once the files are saved, export them to the Computer Numerically Controlled (CNC) machine for the glass to be cut, polished, notched and drilled. This feature is a tremendous time-saver for companies who cut their glass using CNC machines.

CLICK HERE

2) In the Quote/Order Hardware screen accessed from the Shower List screen, an Add Catalog Product button has been created. This button allows you to add any C.R. Laurence product to your quote/order. In addition to the ability to add regular CRL products in this application, you may now add products **after** the quote has been completed. This means that even after you quoted your materials in Showers Online, you may add “last minute” items, either shower or non-shower. If a valid CRL catalog number is entered, the items will be added to the order.



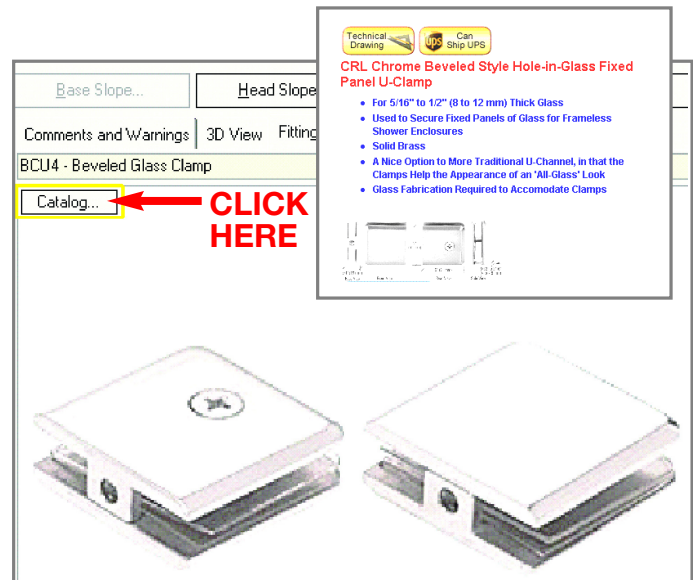
3) Your company logo can appear on any of the printed reports. The company logo is activated in the Customize Business Details screen. To access the company logo location information, start on the Shower List screen and go to Maintain ➡

Reports. From this screen you can select which reports will have the logo, and the position of the logo.



4) There are now expanded options in the Customize Business Details screen. This screen can be accessed by the “-01” user from the Shower List screen by going to Maintain ➔ Administration ➔ Site. This feature now allows for the designation of multiple branch locations in a single database. For example, the “-01” user may have their base in Los Angeles, but the same company has a “-02” user in Miami. Now the different log-ins can have their own address, phone, fax and E-mail on their printed pages.

5) A function on the Maintain Shower screen allows you to view our web site offering of a particular fitting from the Showers Online application. To view our web site offering of a product, select the product from the shower list. In the bottom right corner of the Maintain Shower screen there are three tabs. Select the Fitting Drawing tab. Press the “Catalog” button with the item you wish to view highlighted. Once you are on our web site all the features of our site will be available to you.



There are other enhancements to the Showers Online program that are still in development. From it's inception, Showers Online has been a program that is in a state of growth. We at C.R. Laurence will continue to improve Showers Online, and appreciate any input you may wish to offer.

Sincerely,

Danny Donahue
 Director, Frameless Shower Hardware
 C.R. Laurence Co. Inc.
 (800) 421-6144 ext 7741
 danny_donahue@crlaurence.com