



TAPER-LOC[®]

Frameless Glass Balustrade System

Install glass balustrades with ease...



CRL[®]



Contents

01.	Benefits of TAPER-LOC®	4-5
02.	Installation	6-11
03.	Taper Sets	12
04.	Installation/Removal Tools	13
05.	8B Series Base Shoes	14-16
06.	8B Series Accessories	17-18
07.	9BL Series Base Shoes	20-23
08.	W5B and W7B Series Base Shoes	24-25
09.	9BL, W5B and W7B Series Accessories	26-27
10.	Cap Rails	28-31
11.	Vinyl Inserts	32
12.	Cement and Silicone	33
13.	Hand Rails	34-35
14.	TAPER-LOC® Projects	36-37
13.	Case Studies	38-51



Benefits of TAPER-LOC[®]

Unlike other systems, we consistently apply the same fixing tension on to the glass with TAPER-LOC[®] every single time.

Designed with the installer in mind, we invest in continued development to ensure TAPER-LOC[®] remains the frameless glass balustrade system of choice.

Minimalistic design
with clean lines

Fast and easy to install



Complete installation
from the safe side -
no scaffolding required

Tested to BS6180:2011

Install glass

Step 1

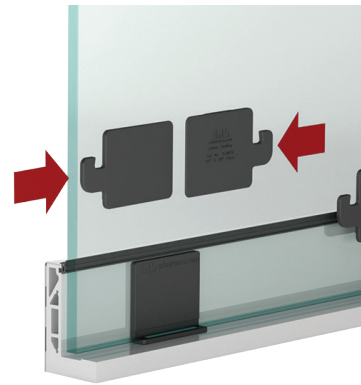
**CAN BE
COMPLETELY
INSTALLED
FROM THE
'SAFE SIDE'**



Ready...

TAPER-LOC® Tapers
insert into the Base Shoe

Step 2



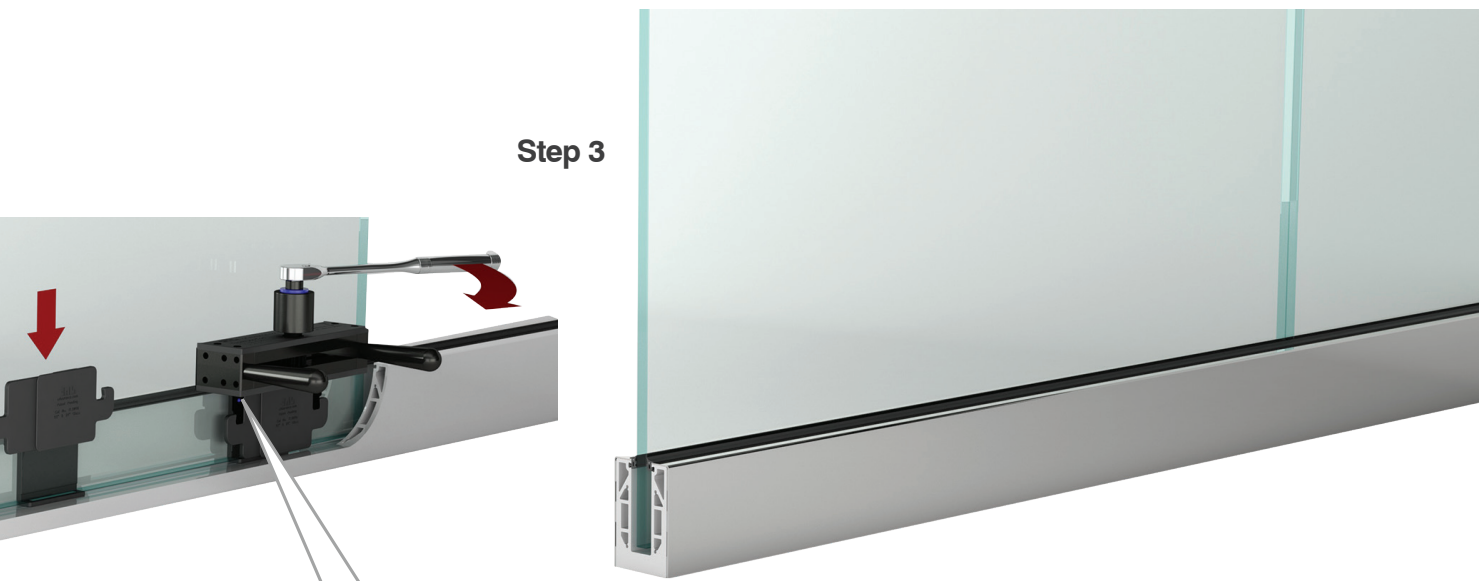
Set...

Simple.
Fast.
Safe.

- TAPER-LOC® dry glazed installation is quick and clean for the installer and for the finished product
- Designed and tested for monolithic and laminated toughened glass
- Designed by CRL for commercial and residential applications
- TAPER-LOC® enables the strongest and safest barriers, giving the installer and end user peace of mind
- TAPER-LOC® installation/removal tool (TLK12) allows broken/scratched glass to be easily removed

For a demonstration visit taper-loc.co.uk

balustrades with ease...



Step 3

Done.

The TAPER-LOC® Installation Tool (TLK12) compresses the Tapers together with a predetermined torque setting. The glass is locked in to place with the same force every single time.

TESTED TO
BS 6180: 2011



TAPER-LOC® enables a secure barrier while maintaining clean and elegant lines.

U.S. Patent Numbers 8,122,654 & 8,201,366
and Commonwealth of Australia Patent Numbers
200820752 and 2012202256

TAPER-LOC®

The System utilises an Installation/Removal Tool and CRL TAPER-LOC® Tapers for 12 mm, 15 mm, and 19 mm monolithic toughened glass applications, and 17.52 mm, 21.52 mm, and 25.52 mm laminated toughened glass. Unique because they use a horizontal taper lock design, TAPER-LOC® Tapers are simply installed with CRL's exclusive TLK12 Installation/Removal Tool.

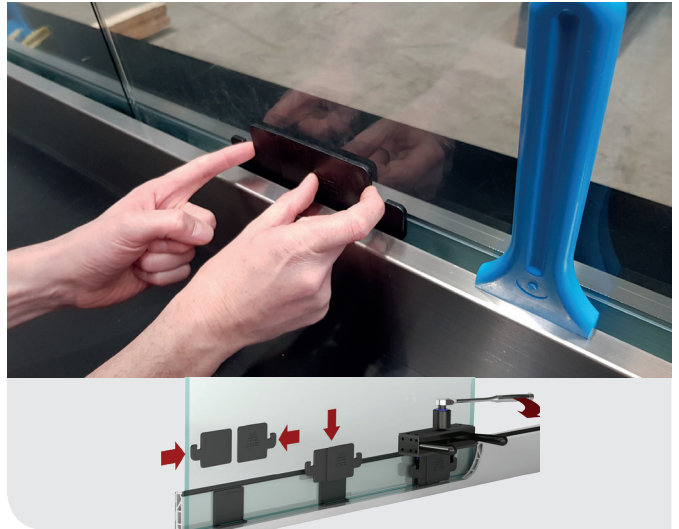
Easy Installation

The process of installing glass balustrades is now easier with CRL's 2018 TAPER-LOC® system. TAPER-LOC® has a unique design that lets you apply precision tension to lock it in place, securing the glass in the aluminium base shoe without the use of messy cement. Your installation time is reduced by up to 50% while still exceeding code standards.



STEP 1

Adhere the L-setting blocks to the bottom of the glass panel and place the glass panel in the base shoe.



STEP 2

Insert the taper set half way down into the base shoe as shown, opposite the L-setting block, and then squeeze the tapers together finger tight.



STEP 3

Place Installation/Removal Tool (TLK12) into position onto the tapers and push them down into the base shoe. Crank the torque wrench until it clicks and breaks for a few degrees, letting you know the tapers are locked to the correct measured torque.

Simple. Fast. Safe.

IT IS AS
SIMPLE
AS THAT!

3 easy steps to installing your glass

TO SEE A DEMONSTRATION, VISIT TAPER-LOC.CO.UK

TESTED TO
BS 6180:2011



CRL Base Shoes for Monolithic Toughened Glass

BASE SHOE CODES :	GLASS THICKNESS	STANDARD CLADDING BOTH SIDES OF BASE SHOE	INTERNAL FASCIA CLADDING	EXTERNAL FASCIA CLADDING
		BRUSHED / POLISHED	BRUSHED / POLISHED	BRUSHED / POLISHED
8B10D	12 mm	BSCBS10 /PS10	N/A	N/A
8B10F	12 mm	N/A	B5CIFBS /PS	B5COFBS /PS
8B58D	15 mm	BSCBS10 /PS10	N/A	N/A
8B58F	15 mm	N/A	B5CIFBS /PS	B5COFBS /PS
8B34D	19 mm	BSCBS10 /PS10	N/A	N/A
8B34F	19 mm	N/A	B5CIFBS /PS	B5COFBS /PS

CRL Base Shoes for Laminated Toughened Glass

BASE SHOE CODES :	GLASS THICKNESS	STANDARD CLADDING BOTH SIDES OF BASE SHOE	INTERNAL FASCIA CLADDING	EXTERNAL FASCIA CLADDING
		BRUSHED / POLISHED	BRUSHED / POLISHED	BRUSHED / POLISHED
9BL56D	13.52 mm	LBSCBS10 /PS10	N/A	N/A
9BL56F	13.52 mm	N/A	L56CIFBS /PS	L56COFBS /PS
9BL68D	17.52 mm	LBSCBS10 /PS10	N/A	N/A
9BL68F	17.52 mm	N/A	L56CIFBS /PS	L68COFBS /PS
9BL21D	21.52 mm	LBSCBS10 /PS10	N/A	NA/
9BL21F	21.52 mm	N/A	L56CIFBS /PS	L21COFBS /PS
9BL25D	25.52 mm	LBSCBS10 /PS10	N/A	N/A
9BL25F	25.52 mm	N/A	L56CIFBS /PS	L25COFBS /PS

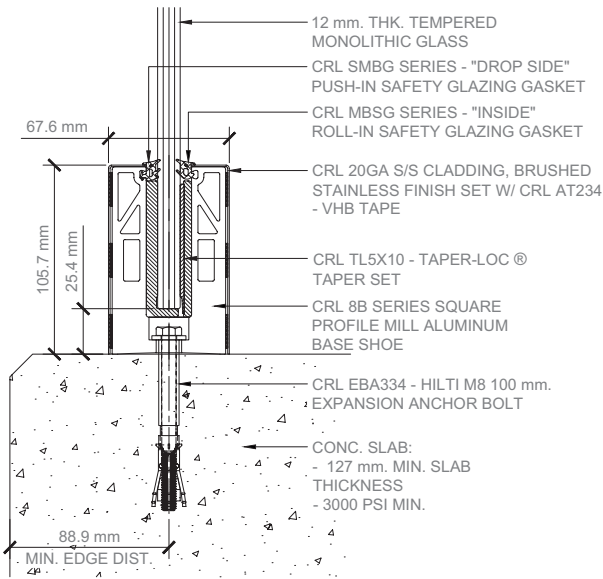
CRL Base Shoes for Monolithic Toughened Windscreen Glass

BASE SHOE CODES :	GLASS THICKNESS	STANDARD CLADDING BOTH SIDES OF BASE SHOE
		BRUSHED / POLISHED
W5B10D	10 mm	BWCBS10 /PS10
W7B10D	19 mm	BWCBS10 /PS10

Typical Installations

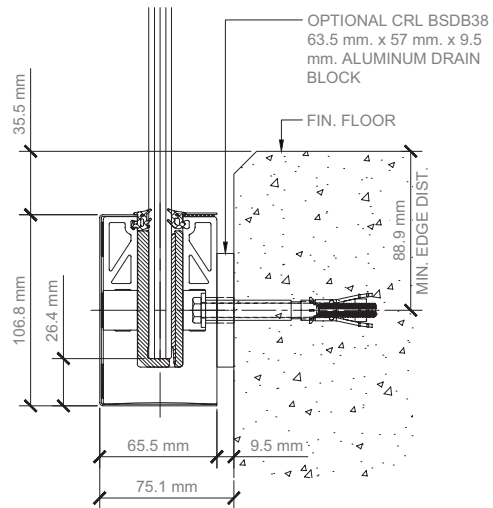
Surface Mount Detail - Concrete Substrate

Anchor spacing will depend on mounting substrate and region of project



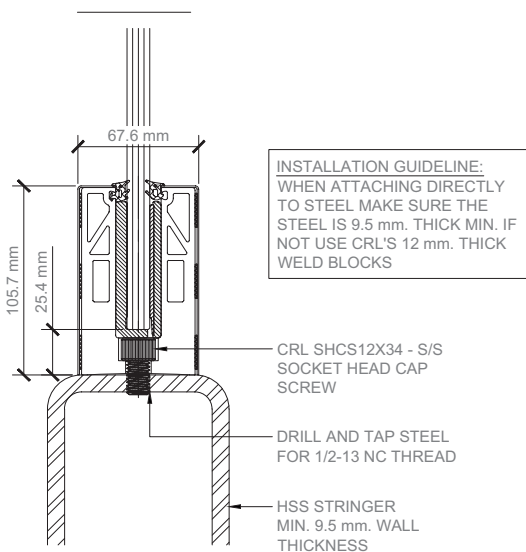
Fascia Mount Detail - Concrete Substrate

Anchor spacing will depend on mounting substrate and region of project



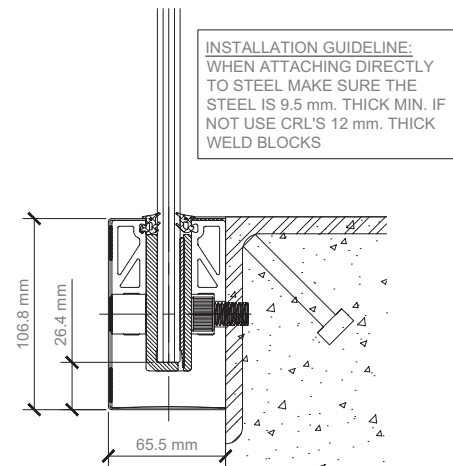
Surface Mount Detail - Steel Substrate

300 mm on centre anchor spacing



Fascia Mount Detail - Steel Substrate

300 mm on centre anchor spacing



CRL TAPER-LOC® Taper Sets for Monolithic and Laminated Toughened Glass

Tapers for monolithic and laminated toughened glass are made of high strength reinforced polymer.

As the TAPER-LOC® Tool compresses the tapers together, they fill the void between the glass and the high strength aluminium base shoe, locking the glass securely in place consistently, every single time.



CRL TAPER-LOC® Taper Set for Monolithic Toughened Glass

- For use with CRL's monolithic toughened glass high strength base shoe only
- For use with 10 mm, 12 mm, 15 mm and 19 mm glass

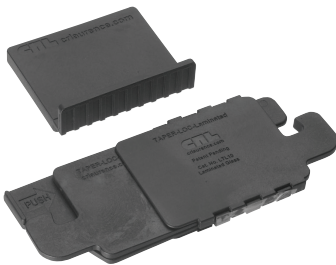
NOTE: Minimum order: 10 sets

Cat. No. TL5X10

For use with 12 mm, 15 mm and 19 mm glass

Cat. No. TL3X10

For use with 10 mm glass for windscreens



CRL TAPER-LOC® Taper Set for Laminated Toughened Glass

- For use with CRL's laminated toughened glass high strength base shoe only
- For use with 13.52 mm, 17.52 mm, 21.52 mm and 25.52 mm glass

NOTE: Minimum order: 10 sets

Cat. No. LTL10X

For use with 21.52 mm and 25.52 mm glass

Cat. No. LTL96X

For use with 13.52 mm and 17.52 mm glass

CRL TAPER-LOC® Installation Tools



CRL Taper-Loc® Installation / Removal Tool Kit

Cat. No. TLK12

The Installation/Removal Tool is used for tightening TAPER-LOC® tapers in the channel of the base shoe. The tool has an Integrated torque wrench that applies the precise lock-up force necessary to set the glass panels. Simply set in place and turn the wrench until a clicking sound is heard. This assures the tapers have been locked together. It can also remove tapers when glass panels need to be reset or replaced.

- KIT INCLUDES:
 - 1 x Integrated Torque Wrench TLK12
 - 1 x Glass Balustrade Setting Tools for Monolithic and Laminated Glass
 - 1 x Pair of Glass Setting Roller Blocks
 - 1 x Standard and Recessed Blades
 - 1 x Instructions
 - 1 x Moulded Carrying Case

CRL PAL Plumb / Angle / Level Indicator

Cat. No. PAL1K

The PAL Plumb/Angle/Level Locator Kit is designed to assist you with level and plumb installations of base shoe for balustrade and windscreen installations. This innovative tool levels the base shoe in both the vertical and horizontal orientations. Perfect for use with all TAPER-LOC® installations.

- KIT INCLUDES:
 - 1 x Laser Tool with Case
 - 1 x Base Shoe Alignment Adapter
 - 1 x Laser Target
 - 1 x Chalk Line
 - 1 x 237 ml Bottle of Blue Chalk Refill
 - 1 x Black Listo Marking Pencil
 - 1 x Blue Sharpie Pen
 - 1 x Instructions
 - 1 x Moulded Carry Case



CRL TAPER-LOC® 8B10 Series Standard Square Base Shoe

Designed for fixing 12 mm glass

- For residential including stairs and landings but excluding external balconies and edges of roofs
- For use with 12 mm monolithic toughened glass
- Safety-seal compatible
- Available in 3 finishes

Surface Mounted Base Shoe

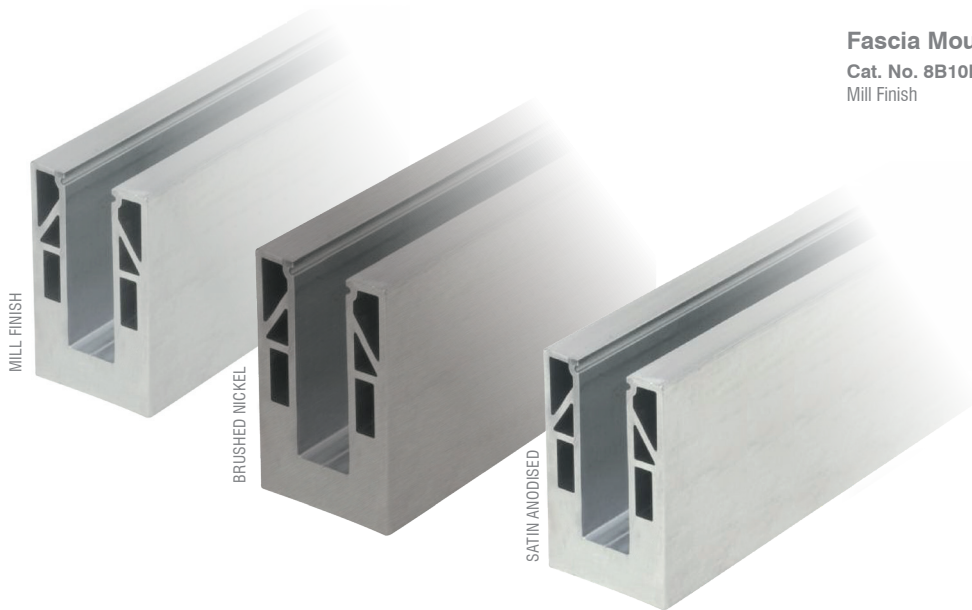
Cat. No. 8B10D
Mill Finish

Cat. No. 8B10DBN
Brushed Nickel

Cat. No. 8B10DSA
Satin Anodised

Fascia Mounted Base Shoe

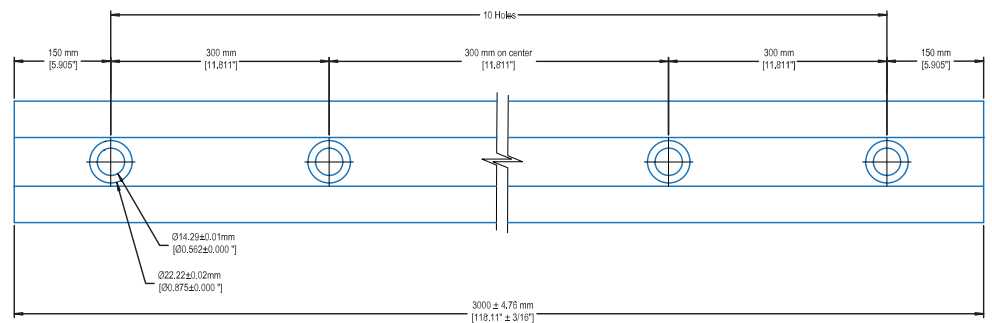
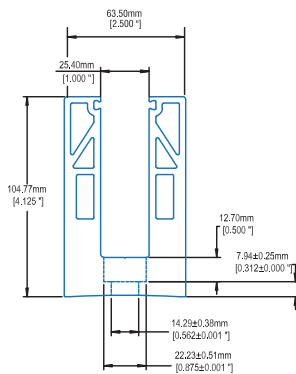
Cat. No. 8B10F
Mill Finish



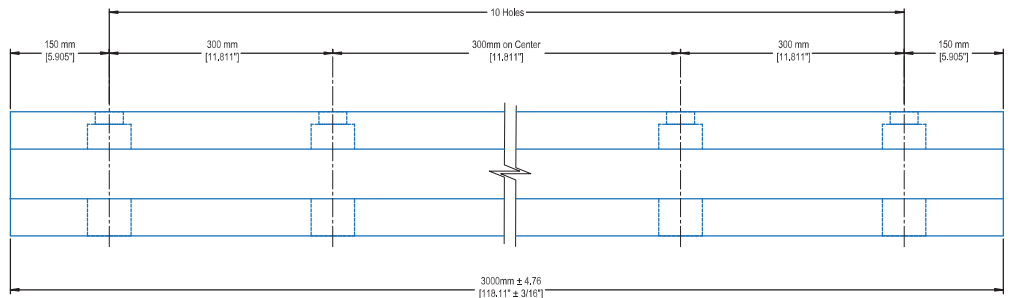
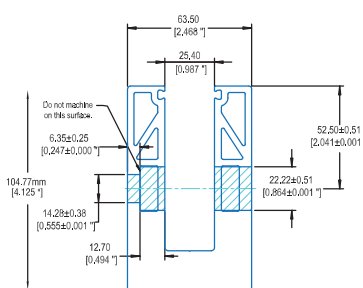
Measurements:

Stock length: 3 m
Hole Size: 14.3 mm
Counter Bore: 22 mm
Depth: 12.7 mm
Centre-to-Centre: 300 mm
Pre-drilled

Base Drilled



Fascia Drilled



CRL TAPER-LOC® 8B58 Series Standard Square Base Shoe

Designed for fixing 15 mm glass

- For residential external balconies, edges of roofs, stairs and landings
- For use with 15 mm monolithic toughened glass
- Safety-seal compatible
- Available in 3 finishes

Surface Mounted Base Shoe

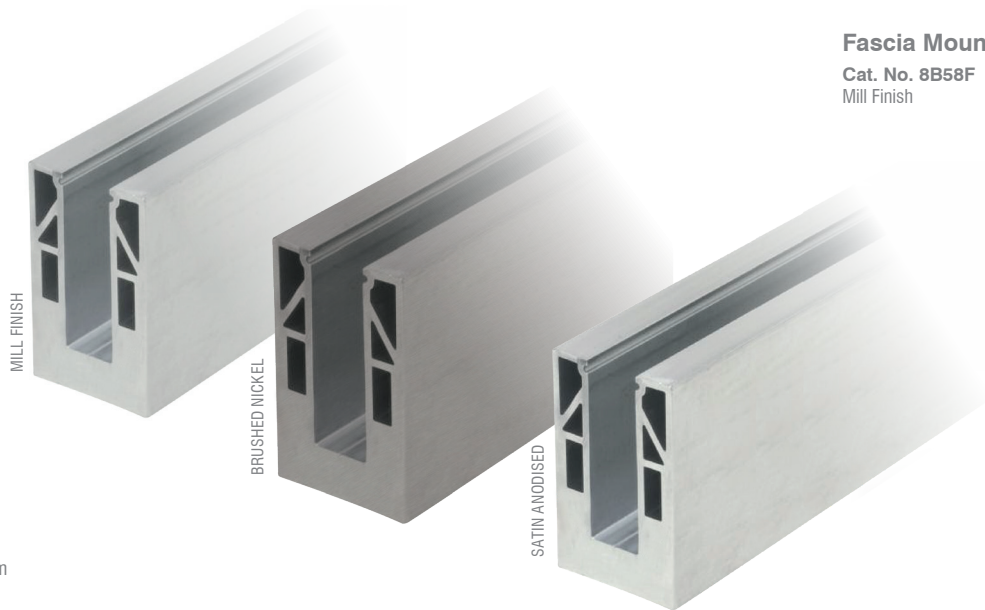
Cat. No. 8B58D
Mill Finish

Cat. No. 8B58DBN
Brushed Nickel

Cat. No. 8B58DSA
Satin Anodised

Fascia Mounted Base Shoe

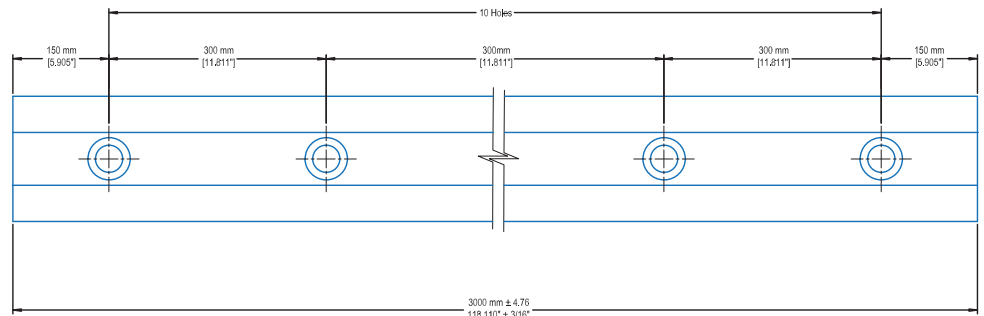
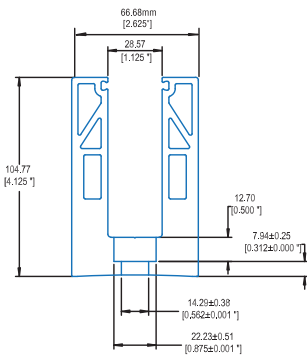
Cat. No. 8B58F
Mill Finish



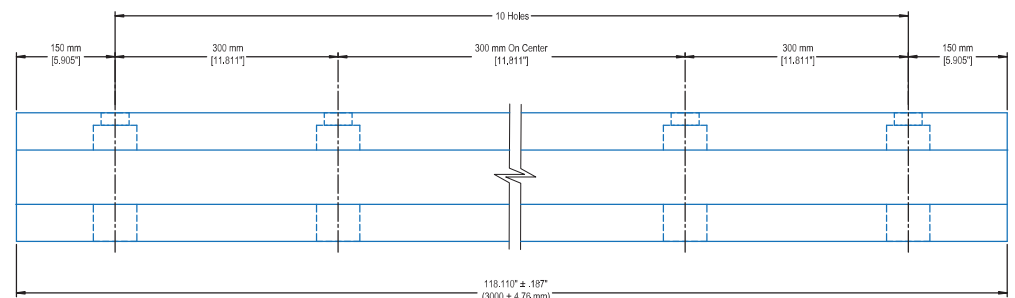
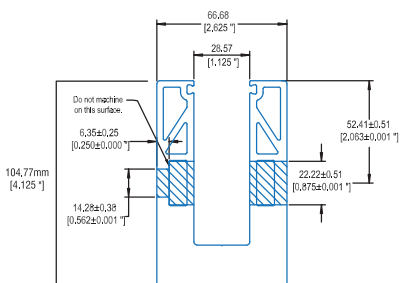
Measurements:

- Stock length: 3 m
- Hole Size: 14.3 mm
- Counter Bore: 22 mm
- Depth: 12.7 mm
- Centre-to-Centre: 300 mm
- Pre-drilled

Base Drilled



Fascia Drilled



For matching tapers, bolts and gaskets, see page 17

CRL TAPER-LOC® 8B34 Series Heavy-Duty Square Base Shoe

Designed for fixing 19 mm glass

- For commercial areas susceptible to overcrowding
- For use with 19 mm monolithic toughened glass
- Safety-seal compatible
- Available in 3 finishes

Surface Mounted Base Shoe

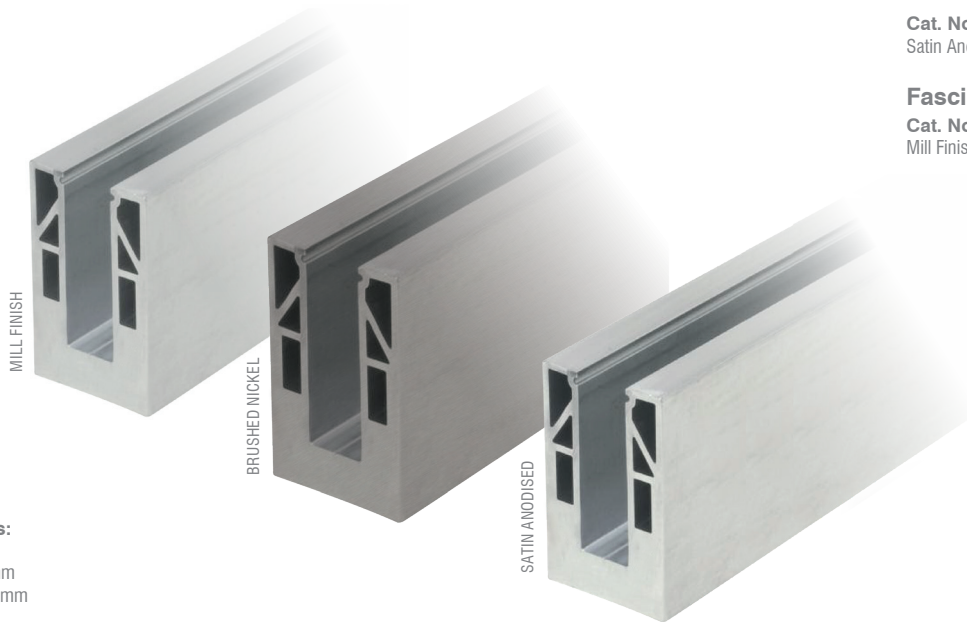
Cat. No. 8B34D
Mill Finish

Cat. No. 8B34DBN
Brushed Nickel

Cat. No. 8B34DSA
Satin Anodised

Fascia Mounted Base Shoe

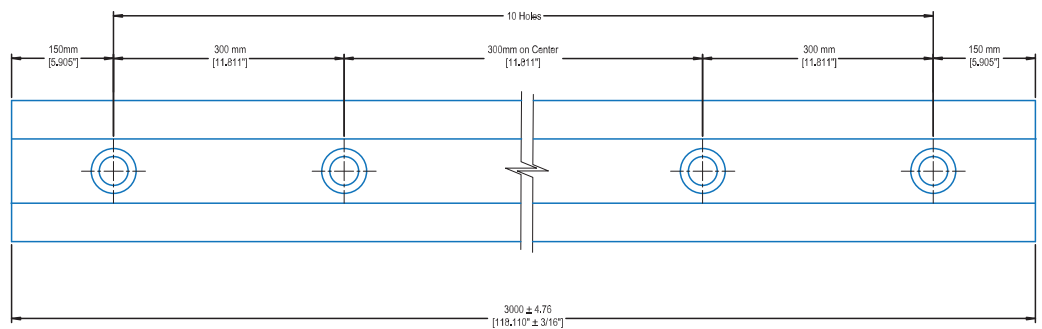
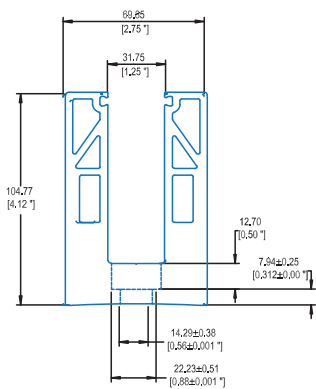
Cat. No. 8B34F
Mill Finish



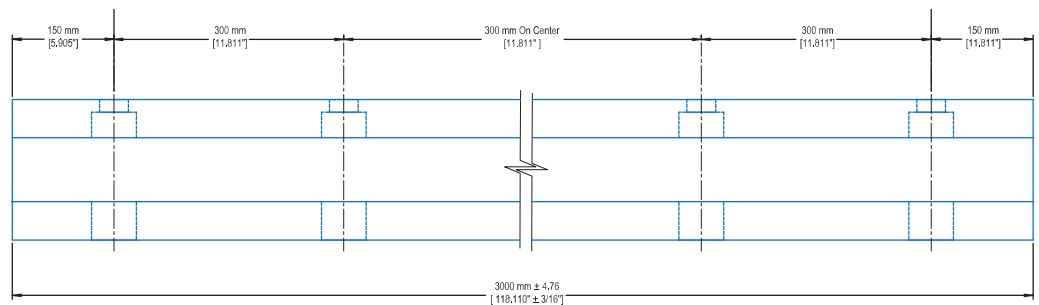
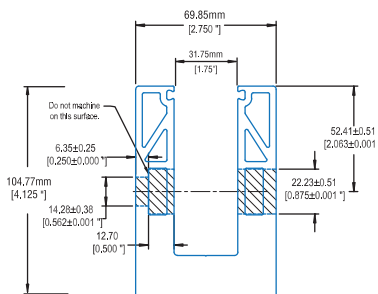
Measurements:

Stock length: 3 m
Hole Size: 14.3 mm
Counter Bore: 22 mm
Depth: 12.7 mm
Centre-to-Centre: 300 mm
Pre-drilled

Base Drilled



Fascia Drilled



For matching tapers, bolts and gaskets, see page 17

CRL TAPER-LOC® Tapers, Bolts and Gaskets for 8B Series

CRL TAPER-LOC® Taper Set for Monolithic Toughened Glass

Cat. No. TL5X10

- Includes two Tapers and one L-setting block
- For use with 12 mm, 15 mm and 19 mm glass



For use with concrete



For use with concrete, Heavy-Duty



For use with steel

CRL TAPER-LOC® Bolts for Monolithic Glass Base Shoes

For Use With Concrete

Cat. No. EBA334

For Use With Concrete, Heavy Duty

Cat. No. EAM8
M8 x 107 mm

For Use With Steel

Cat. No. SHCS12X34
19 mm length

Cat. No. SHCS12X1
25 mm length

Cat. No. SHCS12X112
38 mm length

CRL TAPER-LOC® Top Rubber Gasket for Monolithic Toughened Glass

Cat. No. BSG100
30.5 m roll length

- Can be used on both sides once glass is installed

Cat. No. BSG500
152.4 m roll length



SMBSG1



MBSG1

CRL TAPER-LOC® Safety Seal for Monolithic Glass

Cat. No. SMBSG1
"Drop-Side" safety seal
30.5 m roll length

- Can be used to fix the drop side seal in to the base shoe prior to inserting the glass
- Allows installer to always work from the safe side and avoid the need for expensive scaffolding

Cat. No. MBSG1
Inside safety seal
30.5 m roll length

NEW for 2018

CRL TAPER-LOC® Connectors, Cladding and End Caps for 8B Series



CRL TAPER-LOC® Corner Connectors for Monolithic Glass Base Shoe

For 12 mm Glass

Cat. No. 8B1090D
Mill Finish

Cat. No. 8B1090DBN
Brushed Nickel

Cat. No. 8B1090DSA
Satin Anodised

For 15 mm Glass

Cat. No. 8B5890D
Mill Finish

Cat. No. 8B5890DBN
Brushed Nickel

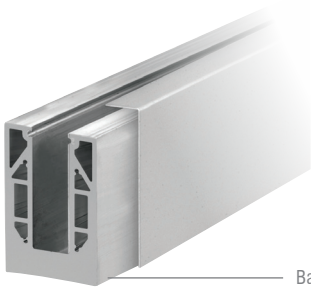
Cat. No. 8B5890DSA
Satin Anodised

For 19 mm Glass

Cat. No. 8B3490D
Mill Finish

Cat. No. 8B3490DBN
Brushed Nickel

Cat. No. 8B3490DSA
Satin Anodised



CRL TAPER-LOC® Base Fixed Cladding for Monolithic Glass Base Shoe

304 Grade

Cat. No. BSCBS10
Brushed Stainless Steel

Cat. No. BSCPS10
Polished Stainless Steel

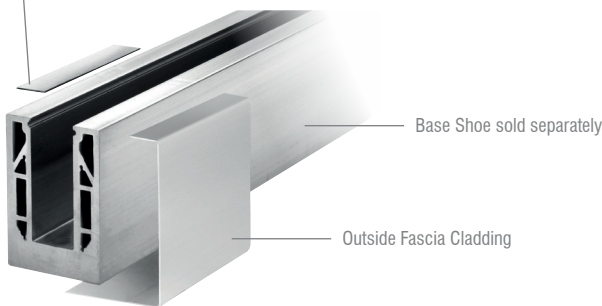
316 Grade

Cat. No. BSCBS106
Brushed Stainless Steel

Cat. No. BSCPS106
Polished Stainless Steel

Base Shoe sold separately

Inside Fascia Cladding



CRL TAPER-LOC® Fascia Fixed Cladding for Monolithic Glass Base Shoe

Outside Fascia Cladding, 304 Grade

For 12 mm Glass

Cat. No. B5C0FBS
Brushed Stainless Steel

Cat. No. B5C0FPS
Polished Stainless Steel

For 15 mm Glass

Cat. No. B6C0FBS
Brushed Stainless Steel

Cat. No. B6C0FPS
Polished Stainless Steel

For 19 mm Glass

Cat. No. B7C0FBS
Brushed Stainless Steel

Cat. No. B7C0FPS
Polished Stainless Steel

Inside Fascia Cladding, 304 Grade

For 12 mm, 15 mm and 19 mm Glass

Cat. No. B5C1FBS
Brushed Stainless Steel

Cat. No. B5C1FPS
Polished Stainless Steel

Outside Fascia Cladding



CRL TAPER-LOC® End Caps for Monolithic Glass Base Shoe

For 12 mm Glass

Cat. No. B5SECBS
Brushed Stainless Steel

Cat. No. B5SECPS
Polished Stainless Steel

Cat. No. 8B10ECBN
Brushed Nickel

Cat. No. 8B10ECSA
Satin Anodised

For 15 mm Glass

Cat. No. B6SECBS
Brushed Stainless Steel

Cat. No. B6SECPS
Polished Stainless Steel

Cat. No. 8B58ECBN
Brushed Nickel

Cat. No. 8B58ECSA
Satin Anodised

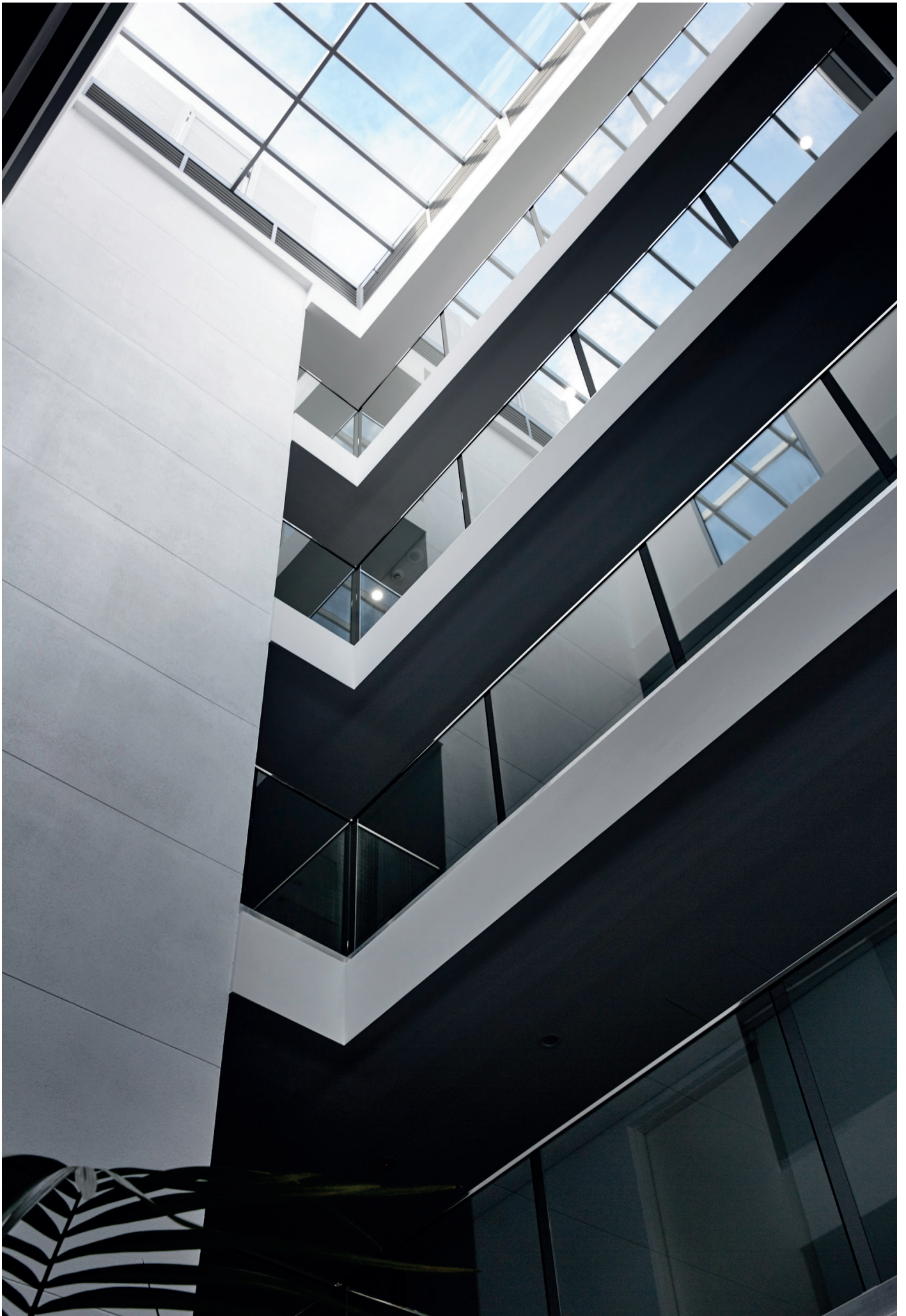
For 19 mm Glass

Cat. No. B7SECBS
Brushed Stainless Steel

Cat. No. B7SECPS
Polished Stainless Steel

Cat. No. 8B34ECBN
Brushed Nickel

Cat. No. 8B34ECSA
Satin Anodised



CRL TAPER-LOC® 9BL56 Series Base Shoe for Windscreen

Designed for fixing 13.52 mm glass

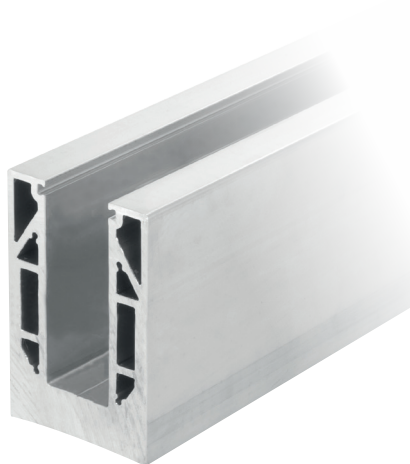
- For windscreens only
- For use with 13.52 mm laminated toughened glass

Surface Mounted Base Shoe

Cat. No. 9BL56D
Mill Finish

Fascia Mounted Base Shoe

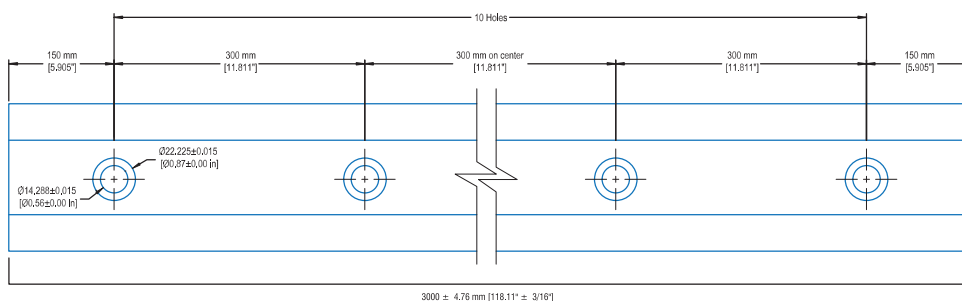
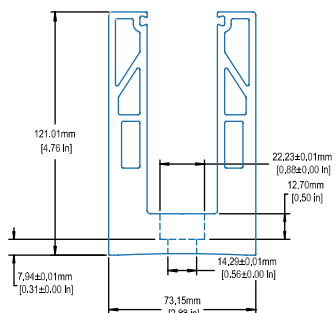
Cat. No. 9BL56F
Mill Finish



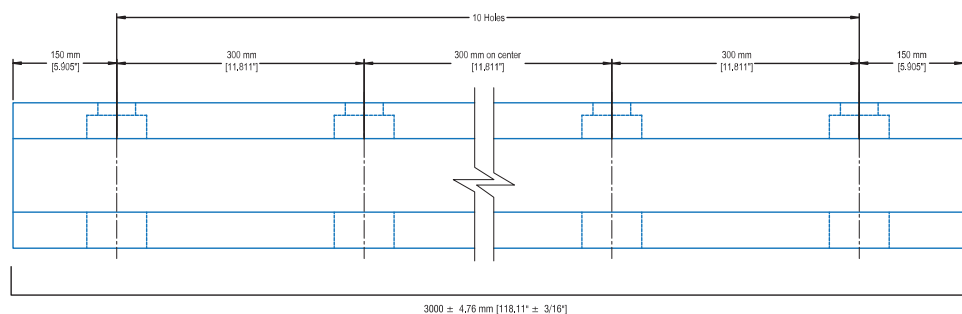
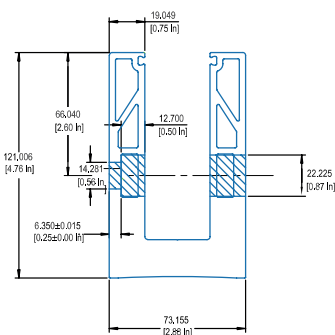
Measurements:

Stock length: 3 mm
Hole Size: 14.29 mm
Counter Bore: 22.23 mm
Depth: 12.7 mm
Centre-to-Centre: 300 mm
Pre-Drilled

Base Drilled



Fascia Drilled



For matching tapers, bolts and gaskets, see page 26

CRL TAPER-LOC® 9BL68 Series Standard Square Base Shoe

Designed for fixing 17.52 mm glass

- For residential including stairs and landings but excluding external balconies and edges of roofs
- For use with 17.52 mm laminated toughened glass
- Safety-seal compatible
- Available in 3 finishes

Surface Mounted Base Shoe

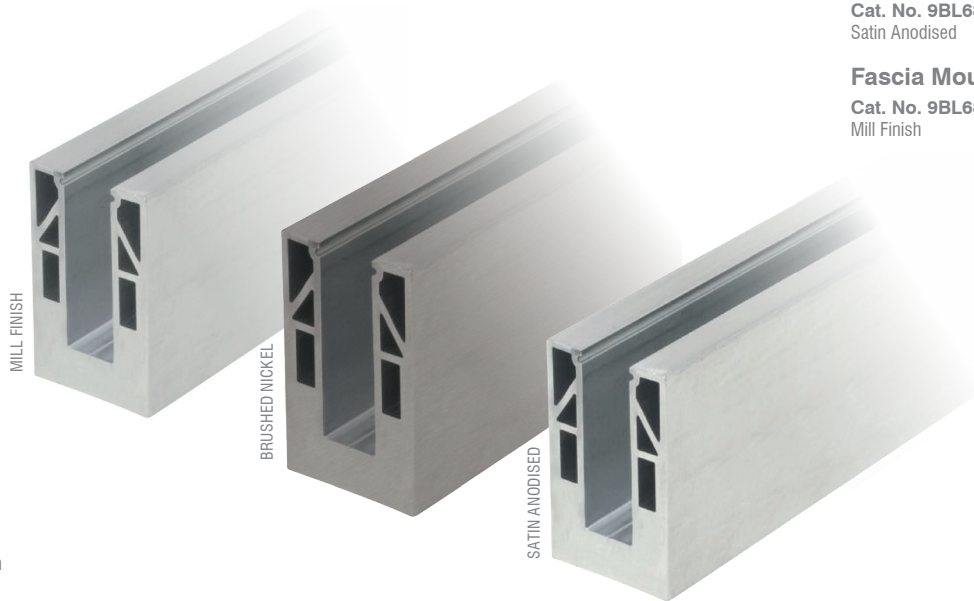
Cat. No. 9BL68D
Mill Finish

Cat. No. 9BL68DBN
Brushed Nickel

Cat. No. 9BL68DSA
Satin Anodised

Fascia Mounted Base Shoe

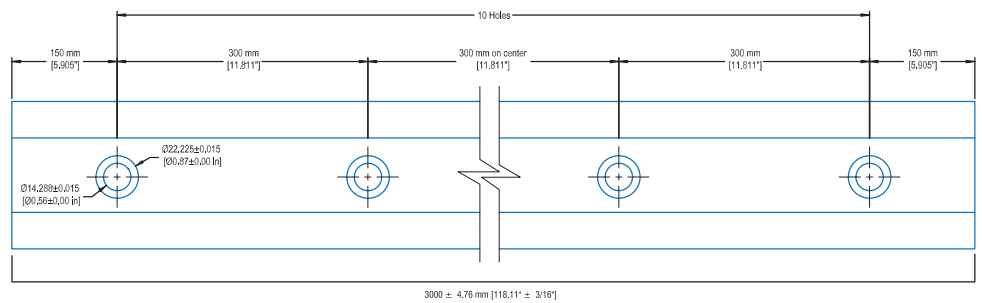
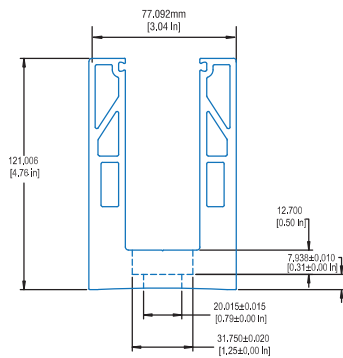
Cat. No. 9BL68F
Mill Finish



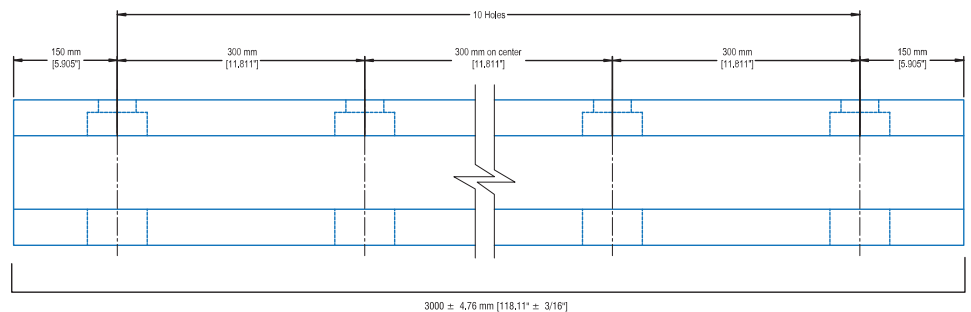
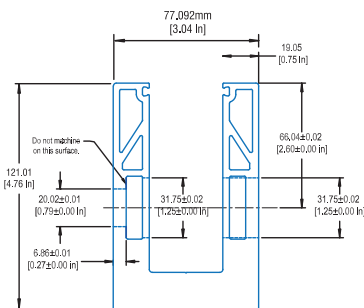
Measurements:

Stock length: 3 m
Hole Size: 20 mm
Counter Bore: 31.7 mm
Depth: 12.7 mm
Centre-to-Centre: 300 mm
Pre-drilled

Base Drilled



Fascia Drilled



For matching tapers, bolts and gaskets, see page 26

CRL TAPER-LOC® 9BL21 Series Standard Square Base Shoe

Designed for fixing 21.52 mm glass

- For commercial areas not susceptible to overcrowding
- For use with 21.52 mm laminated toughened glass
- Safety-seal compatible
- Available in 3 finishes

Surface Mounted Base Shoe

Cat. No. 9BL21D

Mill Finish

Cat. No. 9BL21DBN

Brushed Nickel

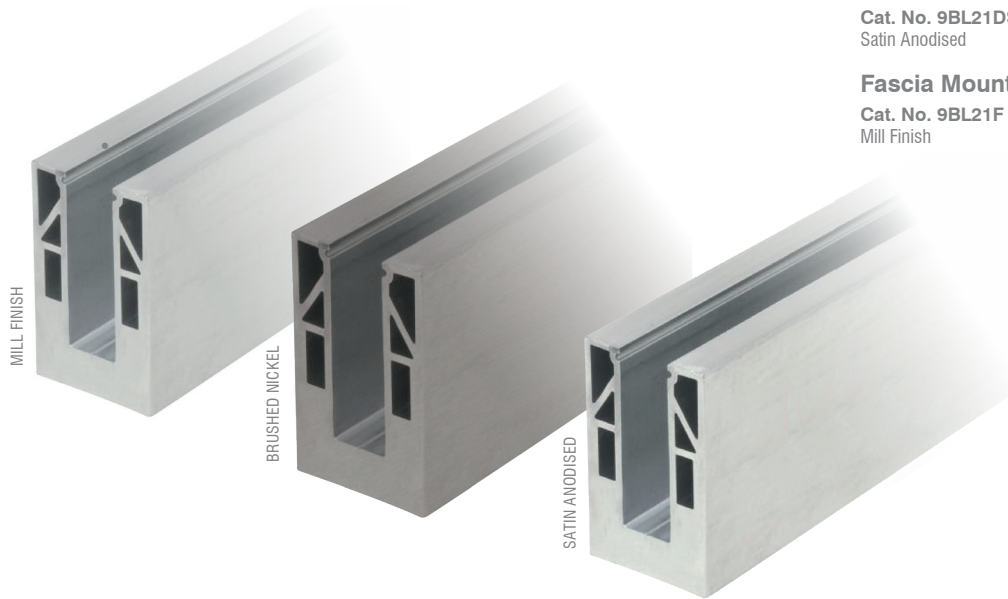
Cat. No. 9BL21DSA

Satin Anodised

Fascia Mounted Base Shoe

Cat. No. 9BL21F

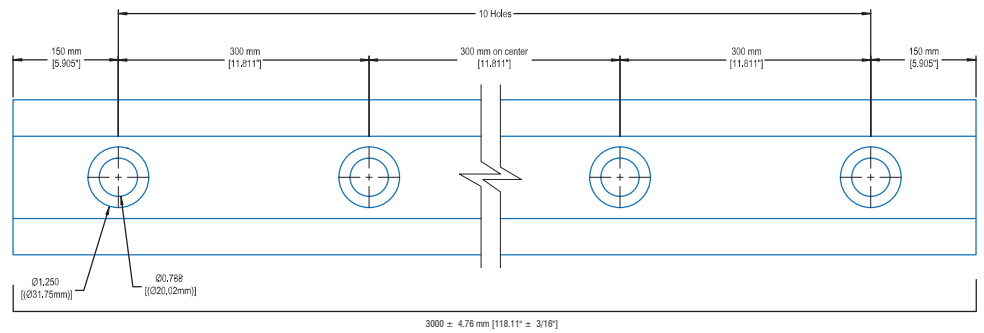
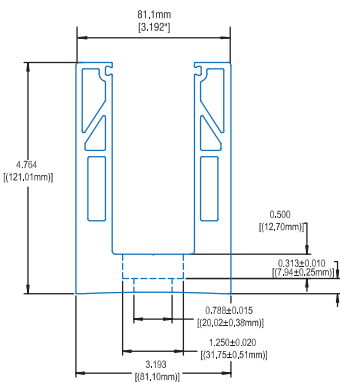
Mill Finish



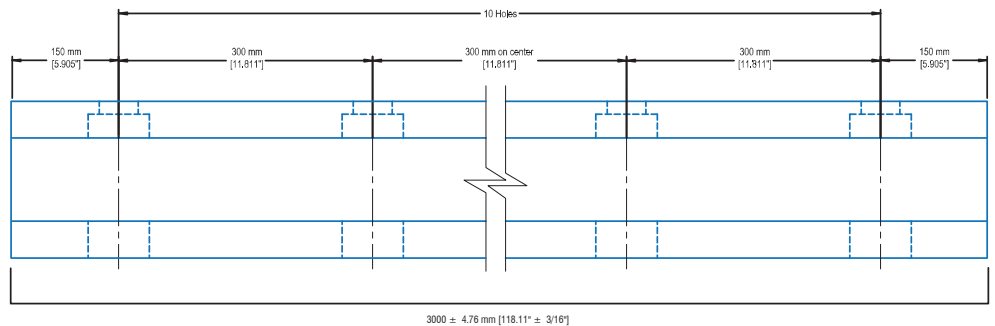
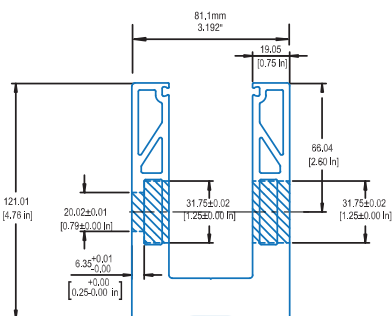
Measurements:

Stock length: 3 m
 Hole Size: 20 mm
 Counter Bore: 31.7 mm
 Depth: 12.7 mm
 Centre-to-Centre: 300 mm
 Pre-drilled

Base Drilled



Fascia Drilled



For matching tapers, bolts and gaskets, see page 26

CRL TAPER-LOC® 9BL25 Series Standard Square Base Shoe

Designed for fixing 25.52 mm glass

- For commercial areas susceptible to overcrowding
- For use with 25.52 mm laminated toughened glass
- Safety-seal compatible
- Available in 3 finishes

Surface Mounted Base Shoe

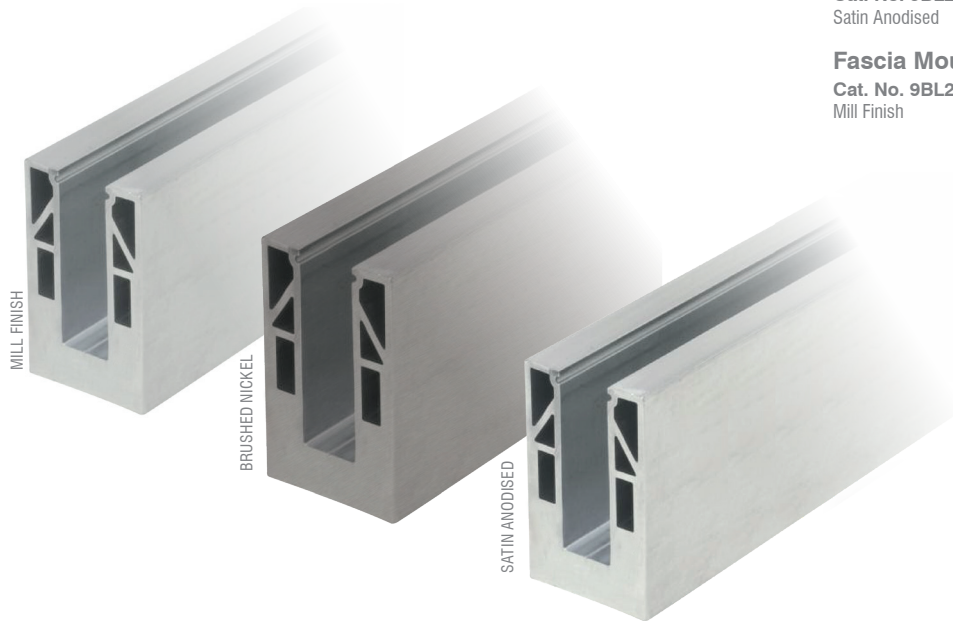
Cat. No. 9BL25D
Mill Finish

Cat. No. 9BL25DBN
Brushed Nickel

Cat. No. 9BL25DSA
Satin Anodised

Fascia Mounted Base Shoe

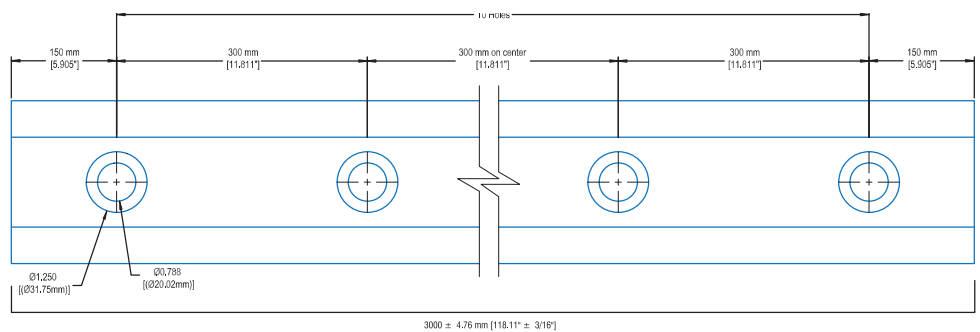
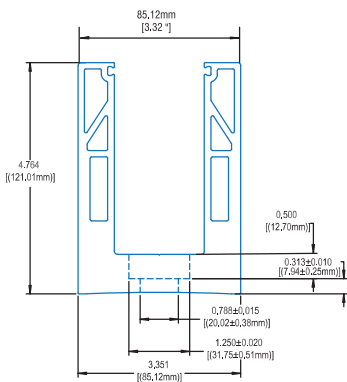
Cat. No. 9BL25F
Mill Finish



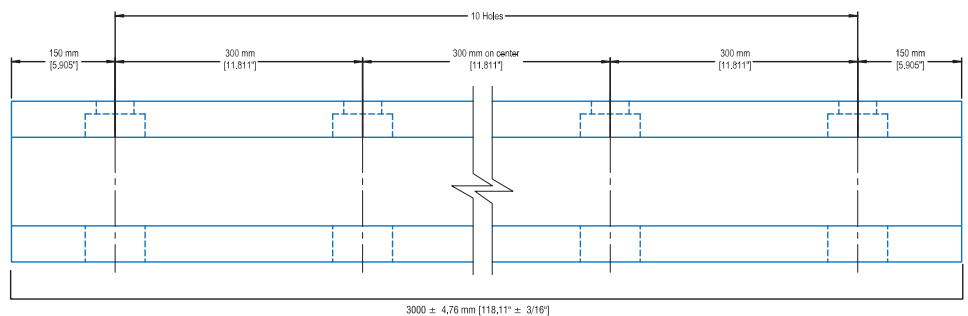
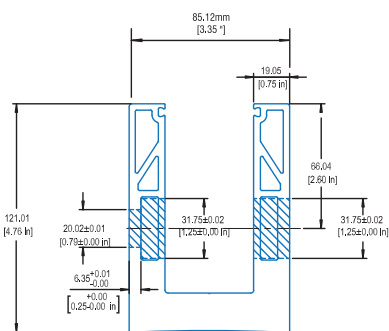
Measurements:

Stock length: 3 m
Hole Size: 20 mm
Counter Bore: 31.7 mm
Depth: 12.7 mm
Centre-to-Centre: 300 mm
Pre-drilled

Base Drilled



Fascia Drilled



For matching tapers, bolts and gaskets, see page 26

CRL TAPER-LOC® W5B Series Base Shoe for Windscreen

Designed for fixing 10 mm glass

- For windscreens only
- For use with 10 mm monolithic toughened glass

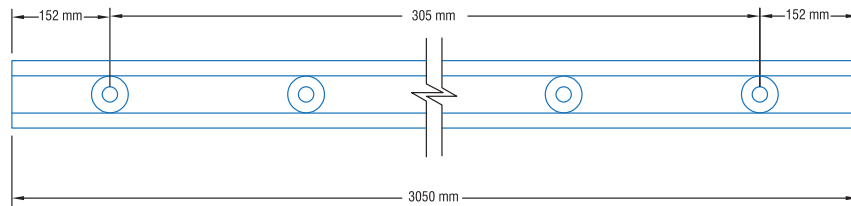
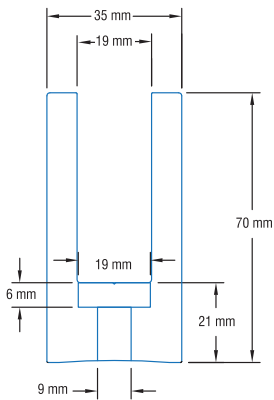
Cat. No. W5B10D
Mill Finish

Measurements:

Stock length: 3.05 m
Hole Size: 9 mm
Counter Bore: 19 mm
Depth: 6 mm
Centre-to-Centre: 305 mm
Pre-Drilled



Base Drilled



CRL TAPER-LOC® Cladding for Windscreen Base Shoe

304 Grade

Cat. No. BWCBS10
Brushed Stainless Steel

Cat. No. BWCPS10
Polished Stainless Steel



CRL TAPER-LOC® End Caps for Windscreen Base Shoe

Cat. No. B5WECBS
Brushed Stainless Steel

Cat. No. B5WECPS
Polished Stainless Steel

CRL TAPER-LOC® W7B Series Base Shoe for Windscreen

Designed for fixing 19 mm glass

- For windscreens only
- For use with 19 mm monolithic toughened glass

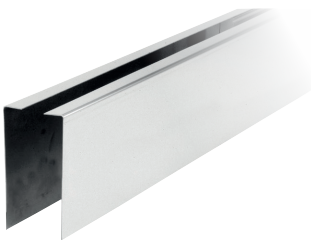
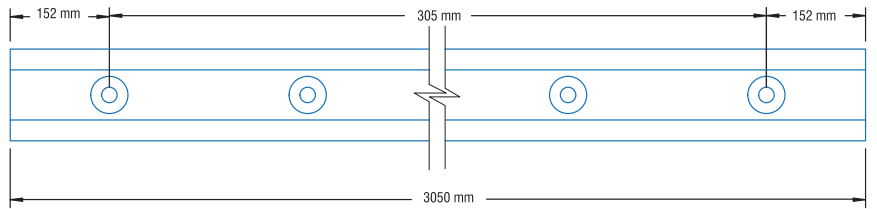
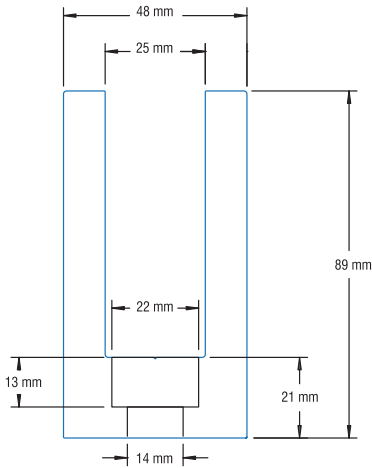
Cat. No. W7B10D
Mill Finish

Measurements:

Stock length: 3.05 mm
Hole Size: 14 mm
Counter Bore: 22 mm
Depth: 13 mm
Centre-to-Centre: 305 mm
Pre-Drilled



Base Drilled



CRL TAPER-LOC® Cladding for Windscreen Base Shoe

304 Grade

Cat. No. B7WCBS10
Brushed Stainless Steel

Cat. No. B7WCPS10
Polished Stainless Steel

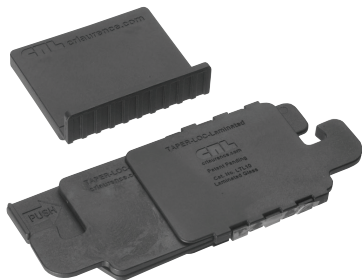


CRL TAPER-LOC® End Caps for Windscreen Base Shoe

Cat. No. B7WECBS
Brushed Stainless Steel

Cat. No. B7WECPS
Polished Stainless Steel

CRL TAPER-LOC® Tapers, Bolts and Gaskets for 9BL Series



CRL TAPER-LOC® Taper Set for Laminated Toughened Glass

- Includes four tapers and one L-setting block
- For use with 13.52 mm, 17.52 mm, 21.52 mm and 25.52 mm glass

Cat. No. LTL96X
For use with 13.52 mm and 17.52 mm glass

Cat. No. LTL10X
For use with 21.52 mm and 25.52 mm glass



For use with concrete



For use with concrete, Heavy-Duty



For use with Steel

CRL TAPER-LOC® Bolts for Laminated Glass Base Shoes

For Use with Concrete

Cat. No. EBA335

For Use With Concrete, Heavy Duty

Cat. No. EAM12
M12 x 147 mm

For Use With Steel

Cat. No. HHCS14X34
M14 x 20 mm

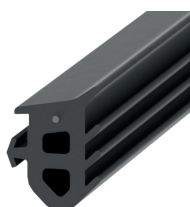


CRL TAPER-LOC® Top Rubber Gasket for Laminated Toughened Glass

- Can be used on both sides once glass is installed

Cat. No. LBSG100
30.5 m roll length

Cat. No. LBSG200
61 m roll length



SLBSG1



LBSG100

CRL TAPER-LOC® Safety Seal for Laminated Glass

- Can be used to fix the drop side seal in to the base shoe prior to inserting the glass
- Allows installer to always work from the safe side and avoid the need for expensive scaffolding

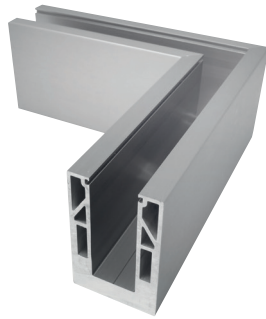
Cat. No. SLBSG1
"Drop-Side" safety seal
30.5 m roll length

Cat. No. LBSG100
Inside safety seal
30.5 m roll length

Cat. No. LBSG200
Inside safety seal
61 m roll length

NEW for 2018

CRL TAPER-LOC® Connectors, Cladding and End Caps for 9BL Series



CRL TAPER-LOC® Corner Connectors for Laminated Glass Base Shoe

For 17.52 mm Glass

Cat. No. 9BL6890D
Mill Finish

Cat. No. 9BL6890DBN
Brushed Nickel

Cat. No. 9BL6890DSA
Satin Anodised

For 21.52 mm Glass

Cat. No. 9BL2190D
Mill Finish

Cat. No. 9BL2190DBN
Brushed Nickel

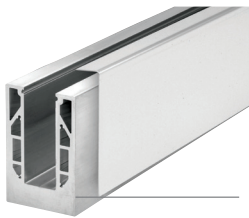
Cat. No. 9BL2190DSA
Satin Anodised

For 25.52 mm Glass

Cat. No. 9BL2590D
Mill Finish

Cat. No. 9BL2590DBN
Brushed Nickel

Cat. No. 9BL2590DSA
Satin Anodised



CRL TAPER-LOC® Base Fixed Cladding for Laminated Glass Base Shoe

For 13.52, 17.52, 21.52 and 25.52 mm Glass, 316 Grade

Cat. No. LBSCBS10
Brushed Stainless Steel

Cat. No. LBSCPS10
Polished Stainless Steel

Base Shoe sold separately

CRL TAPER-LOC® Fascia Fixed Cladding for Laminated Glass Base Shoe

Outside Fascia Cladding

For 13.52 mm Glass

Cat. No. L56C0FBS
Brushed Stainless Steel

Cat. No. L56C0FPS
Polished Stainless Steel

For 17.52 mm Glass

Cat. No. L68C0FBS
Brushed Stainless Steel

Cat. No. L68C0FPS
Polished Stainless Steel

For 21.52 mm Glass

Cat. No. L21C0FBS
Brushed Stainless Steel

Cat. No. L21C0FPS
Polished Stainless Steel

For 25.52 mm Glass

Cat. No. L25C0FBS
Brushed Stainless Steel

Cat. No. L25C0FPS
Polished Stainless Steel

Inside Fascia Cladding

For 13.52, 17.52, 21.52 and 25.52 mm Glass

Cat. No. L56C1FBS
Brushed Stainless Steel

Cat. No. L56C1FPS
Polished Stainless Steel

Inside Fascia Cladding



Base Shoe sold separately

Outside Fascia Cladding

CRL TAPER-LOC® End Caps for Laminated Glass Base Shoe



For 13.52 mm Glass

Cat. No. L56SECBS
Brushed Stainless Steel

Cat. No. L56SECPS
Polished Stainless Steel

For 17.52 mm Glass

Cat. No. L68SECBS
Brushed Stainless Steel

Cat. No. L68SECPS
Polished Stainless Steel

Cat. No. 9BL68ECBN
Brushed Nickel

Cat. No. 9BL68ECSA
Satin Anodised

For 21.52 mm Glass

Cat. No. L21SECBS
Brushed Stainless Steel

Cat. No. L21SECPS
Polished Stainless Steel

Cat. No. 9BL21ECBN
Brushed Nickel

Cat. No. 9BL21ECSA
Satin Anodised

For 25.25 mm Glass

Cat. No. L25SECBS
Brushed Stainless Steel

Cat. No. L25SECPS
Polished Stainless Steel

Cat. No. 9BL25ECBN
Brushed Nickel

Cat. No. 9BL25ECSA
Satin Anodised

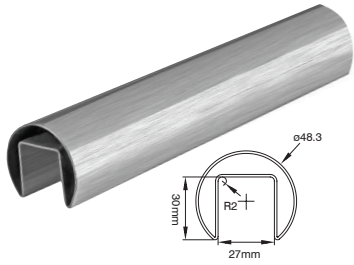


Cap Rails and Hand Rails

Complete the look with the safety of a cap or hand rail fixed with vinyl or silicone, depending on your glass thickness.



CRL Round Cap Rails



CRL Round Cap Rail

- For use with 12 mm to 21.52 mm glass with vinyl inserts - see page 32
- For 25.52 mm glass with silicone - see page 33
- 316 stainless steel
- Connects to a variety of fabricated corners and end caps
- 1.2 mm material thickness

Cat. No. EUGR20BS

Brushed Stainless Steel - 3 m Length

Cat. No. EUGR20BS14

Brushed Stainless Steel - 4.2 m Length

Cat. No. EUGR20PS

Polished Stainless Steel - 3 m Length

Cat. No. EUGR20PS14

Polished Stainless Steel - 4.2 m Length

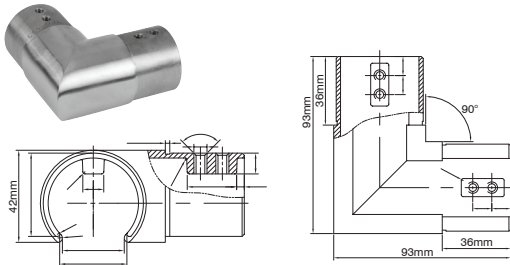


CRL Round Internal Connector

- Used with 48.3 mm cap rail
- 316 grade stainless steel
- 1.2 mm material thickness

Cat. No. EUGR20CSS

Brushed Stainless



CRL Round 90° Corner

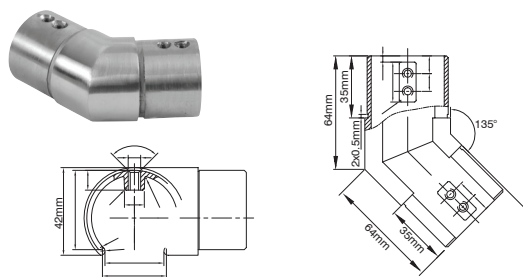
- Used with 48.3 mm cap rail
- 316 grade stainless steel
- 1.2 mm material thickness

Cat. No. EUGR20HBS

Brushed Stainless Steel

Cat. No. EUGR20HPS

Polished Stainless Steel



CRL Round 135° Corner

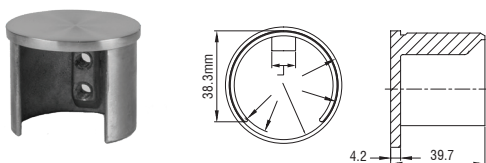
- Used with 48.3 mm cap rail
- 316 grade stainless steel
- 1.2 mm material thickness

Cat. No. EUGR20H3BS

Brushed Stainless Steel

Cat. No. EUGR20H3PS

Polished Stainless Steel



CRL Round End Cap

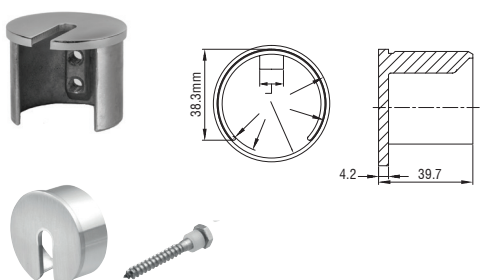
- Used with 48.3 mm cap rail
- 316 grade stainless steel
- 1.2 mm material thickness

Cat. No. EUGR20ECBS

Brushed Stainless Steel

Cat. No. EUGR20ECPS

Polished Stainless Steel



CRL Round Securing End Cap

- Used with 48.3 mm cap rail
- 316 grade stainless steel
- Comes with fixing screws
- 1.2 mm material thickness

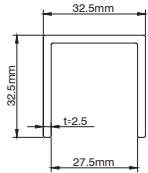
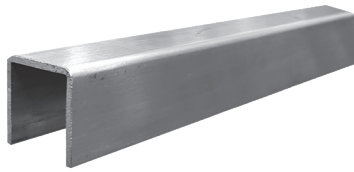
Cat. No. EUGR20SECBS

Brushed Stainless Steel

Cat. No. EUGR20SECPS

Polished Stainless Steel

CRL Square Cap Rails



CRL Square Cap Rail

- For 12 mm to 21.52 mm glass with vinyl inserts - see page 32
- Sold per 3 metre length
- 316 grade stainless steel
- 2.5 mm material thickness

Cat. No. EUL10BS
Brushed Stainless Steel

Cat. No. EUL10PS
Polished Stainless Steel

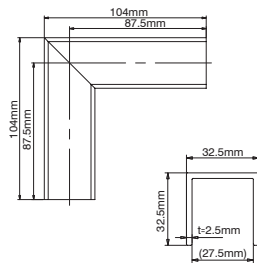
Contact Technical Sales if using 25.52 mm laminated toughened glass for further details



CRL Square Internal Connectors

- 316 grade stainless steel
- 2.5 mm material thickness

Cat. No. EUL10CSS
Brushed Stainless Steel

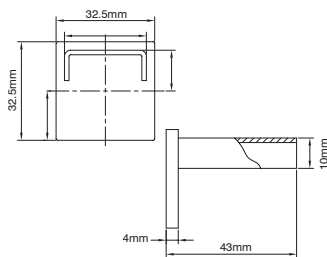


CRL Square 90° Corner

- 316 grade stainless steel
- 2.5 mm material thickness

Cat. No. EUL10HBS
Brushed Stainless Steel

Cat. No. EUL10HPS
Polished Stainless Steel

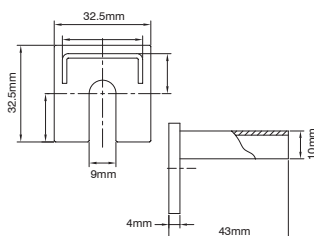
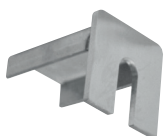


CRL Square End Caps

- 316 grade stainless steel
- 2.5 mm material thickness

Cat. No. EUL10ECBS
Brushed Stainless Steel

Cat. No. EUL10ECPS
Polished Stainless Steel



CRL Square Securing End Caps

- 316 grade stainless steel
- 2.5 mm material thickness

Cat. No. EUL10SECBS
Brushed Stainless Steel

Cat. No. EUL10SECPS
Polished Stainless Steel

CRL Vinyl Inserts for Round (EUGR20) and Square (EUL10) Cap Rails



- CRL Vinyl Insert for 12 mm Glass**
- Used with 48.3 mm cap rail and CRL square cap rail
 - Cap rail vinyl

Cat. No. EUGR5PV
3 m Length

Cat. No. EUGR5PV14
4.2 m Length



- CRL Vinyl Insert for 15 mm Glass**
- Used with 48.3 mm cap rail and CRL square cap rail
 - Cap rail vinyl

Cat. No. EUGR6PV
3 m Length

Cat. No. EUGR6PV14
4.2 m Length



- CRL Vinyl Insert for 19 mm Glass**
- Used with 48.3 mm cap rail and CRL square cap rail
 - Cap rail vinyl

Cat. No. EUGR7PV
3 m Length

Cat. No. EUGR6PV14
4.2 m Length



- CRL Vinyl Insert for 13.52 mm Glass**
- Used with 48.3 mm cap rail and CRL square cap rail
 - Cap rail vinyl

Cat. No. EUGR56PV
3 m Length

Cat. No. EUGR56PV14
4.2 m Length



- CRL Vinyl Insert for 17.52 mm Glass**
- Used with 48.3 mm cap rail and CRL square cap rail
 - Cap rail vinyl

Cat. No. EUGR68PV
3 m Length

Cat. No. EUGR68PV14
4.2 m Length



- CRL Vinyl Insert for 21.52 mm Glass**
- Used with 48.3 mm cap rail and CRL square cap rail
 - Cap rail vinyl

Cat. No. EUGR21PV
3 m Length

Cat. No. EUGR21PV14
4.2 m Length

For 25.52 mm glass use EURT408 Silicone - see next page

CRL Contact Cement



CRL Loctite® Metal Contact Cement

- The strength of an epoxy and the speed of an instant adhesive
- Permanently bonds cap rails, hand rails, and their accessories with superior strength holding power up to 4,900psi
- Offers handling strength in 60 seconds, full cure in 24 hours
- Fixing handrail and cap rail connectors

Cat. No. 32629
Contact Cement

Cat. No. 7649
60 Second Primer

CRL Loctite® 60 Second Primer for Metal Contact Cement

- Use with Cat. No. 32629 for 60 second activation
- Single component non-CFC solvent based surface activator

CRL Expanding Cement



CRL Kwikset® Expanding Cement

- Versatile high strength cement for setting glass panels in to base shoe as an alternative to using TAPER-LOC®
- Kwikset® for exterior and interior applications
- Great for setting core mount stanchions for vertical posts
- Expands as it sets
- Fast setting, they will not shrink or crack when used as directed
- Simply mix with water
- CRL recommends consulting with the glass fabricator prior to wet setting laminated toughened glass

Cat. No. KWX25
11.3 kg

Cat. No. KWX50
22.6 kg

CRL Silicone



CRL Industrial and Construction Silicone

- Low odour, neutral cure formula
- Compatible with insulating glass glazing
- Excellent adhesion to most surfaces
- Low modulus
- High quality formula - low shrinkage
- 300 ml cartridge, 12 per case
- Special countertop display box
- Conforms to ISO 11600
- Also recommended for use with vinyl inserts and cap rails

Cat. No. EURTV408C
Clear

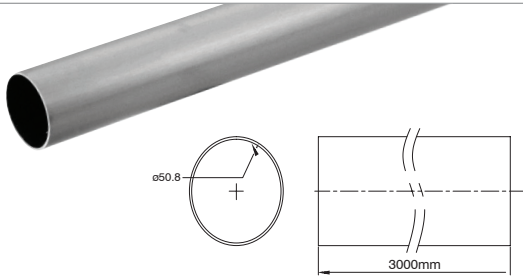
Cat. No. EURTV408W
White

Cat. No. EURTV408BL
Black

Cat. No. EURTV408G
Grey

Cat. No. EURTV408A
Anthracite

CRL Hand Rails

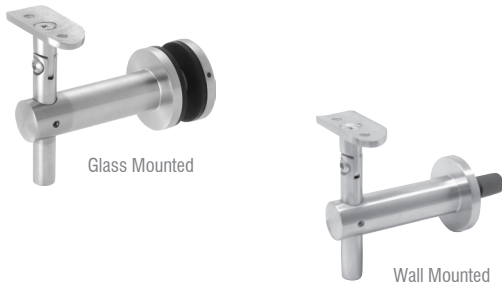


CRL Hand Rail Tubing

- 50.8 mm diameter
- Sold per 3 metre length
- Used with European post kits
- 316 grade stainless steel
- 1.2 mm material thickness

Cat. No. EUHR20BS
Brushed Stainless Steel

Cat. No. EUHR20PS
Polished Stainless Steel



CRL Sunset Series Glass Mounted and Wall Mounted Hand Rail Bracket

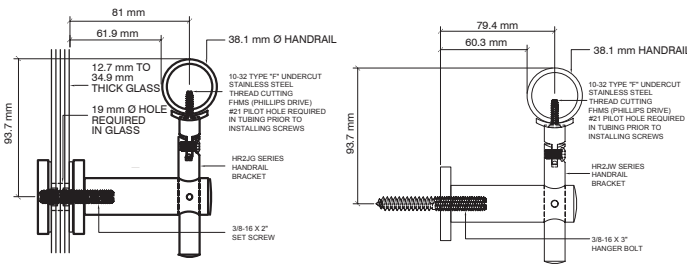
- Used with 50.8 mm diameter hand rail tubing
- Used with 12 mm to 25.52 mm glass
- 3-way adjustable
- Ready to install
- 316 grade stainless steel

Cat. No. HR2JGBS
Glass Mounted
Brushed Stainless Steel

Cat. No. HR2JGPS
Glass Mounted
Polished Stainless Steel

Cat. No. HR2JWBS
Wall Mounted
Brushed Stainless Steel

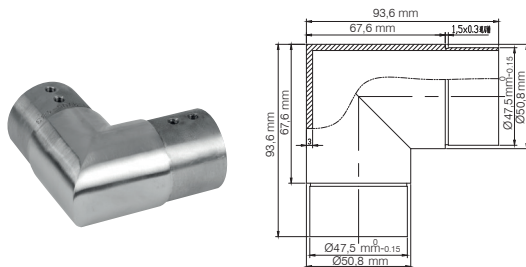
Cat. No. HR2JWPS
Wall Mounted
Polished Stainless Steel



CRL Internal Connector

- Used with 50.8 mm diameter handrail tubing
- 316 grade stainless steel
- 1.2 mm material thickness

Cat. No. EUHR20CSS
Brushed Stainless Steel

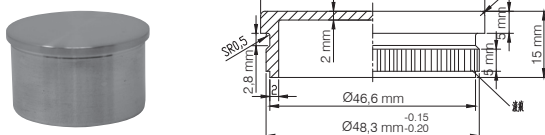


CRL 90° Corner

- Used with 50.8 mm diameter handrail tubing
- 316 grade stainless steel
- 1.2 mm material thickness

Cat. No. EUHR20HBS
Brushed Stainless Steel

Cat. No. EUHR20HPS
Polished Stainless Steel

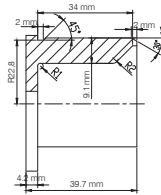
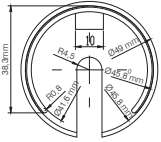


CRL End Cap

- Used with 50.8 mm diameter handrail tubing
- 316 grade stainless steel
- 1.2 mm material thickness

Cat. No. EUHR20ECBS
Brushed Stainless Steel

Cat. No. EUHR20ECP
Polished Stainless Steel

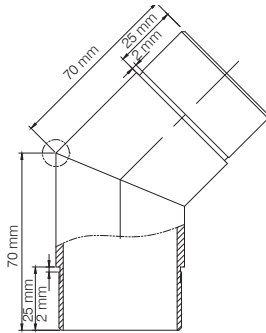


Securing End Cap

- Used with 50.8 mm diameter handrail tubing
- 316 grade stainless steel
- Comes with fixing screws
- 1.2 mm material thickness

Cat. No. EUHR20SECBS
Brushed Stainless Steel

Cat. No. EUHR20SECPS
Polished Stainless Steel

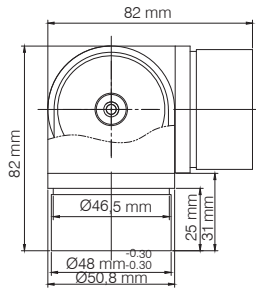


CRL 135° Corner

- Used with 50.8 mm diameter handrail tubing
- 316 grade stainless steel
- 1.2 mm material thickness

Cat. No. EUHR20H3BS
Brushed Stainless Steel

Cat. No. EUHR20H3PS
Polished Stainless Steel

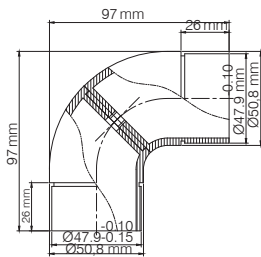


CRL 360° Adjustable Corner

- Used with 50.8 mm diameter handrail tubing
- 316 grade stainless steel
- 1.2 mm material thickness

Cat. No. EUHR20ADJBS
Brushed Stainless Steel

Cat. No. EUHR20ADJPS
Polished Stainless Steel

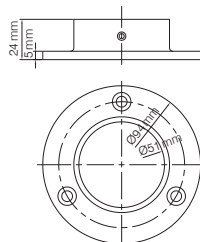


CRL Adjustable Flange

- Used with 50.8 mm diameter handrail tubing
- 316 grade stainless steel
- 1.2 mm material thickness

Cat. No. EUHR20PFBS
Brushed Stainless Steel

Cat. No. EUHR20PFPS
Polished Stainless Steel



CRL Full Flange

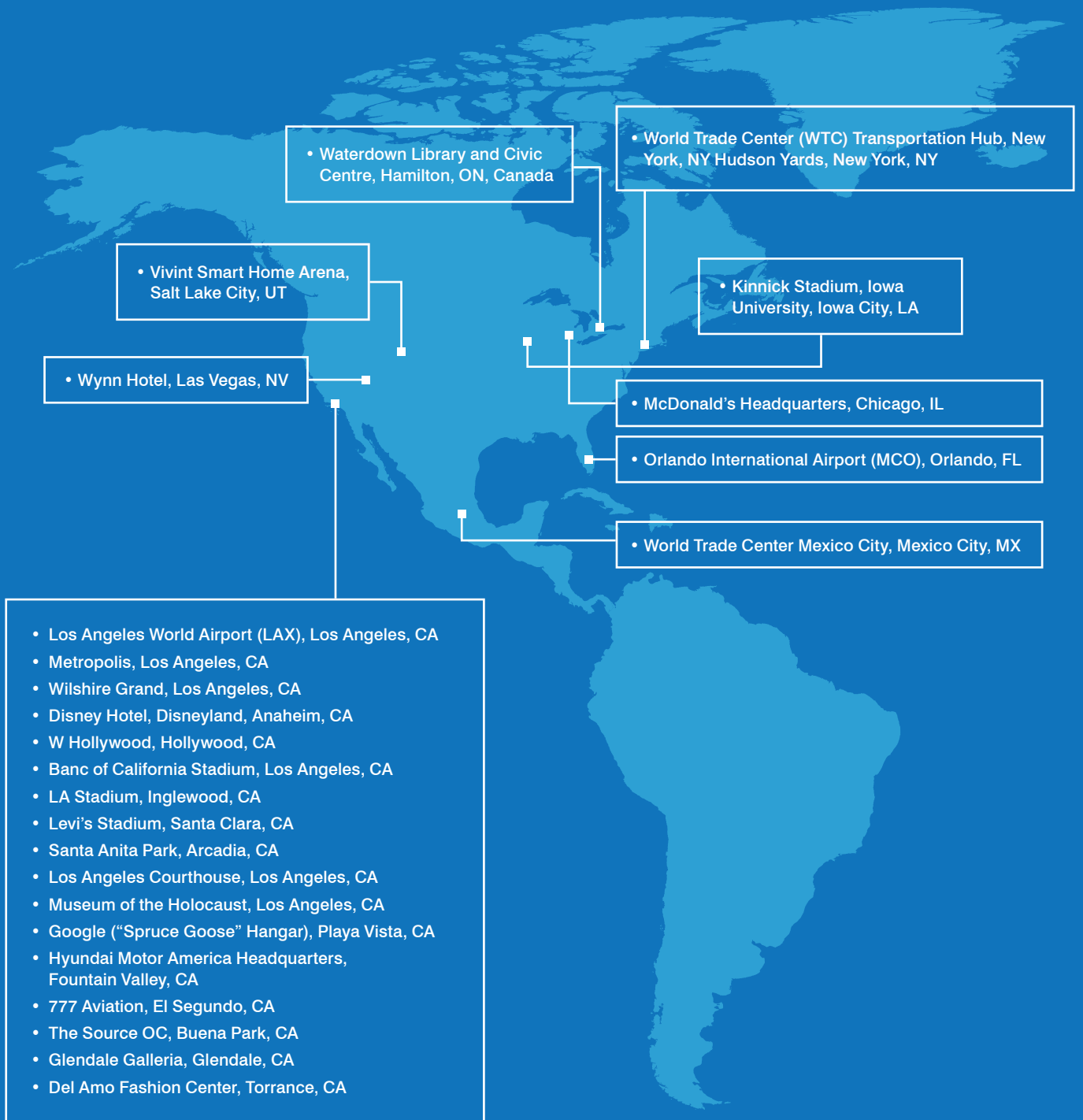
- Used with 50.8 mm diameter handrail tubing
- 316 grade stainless steel
- 1.2 mm material thickness

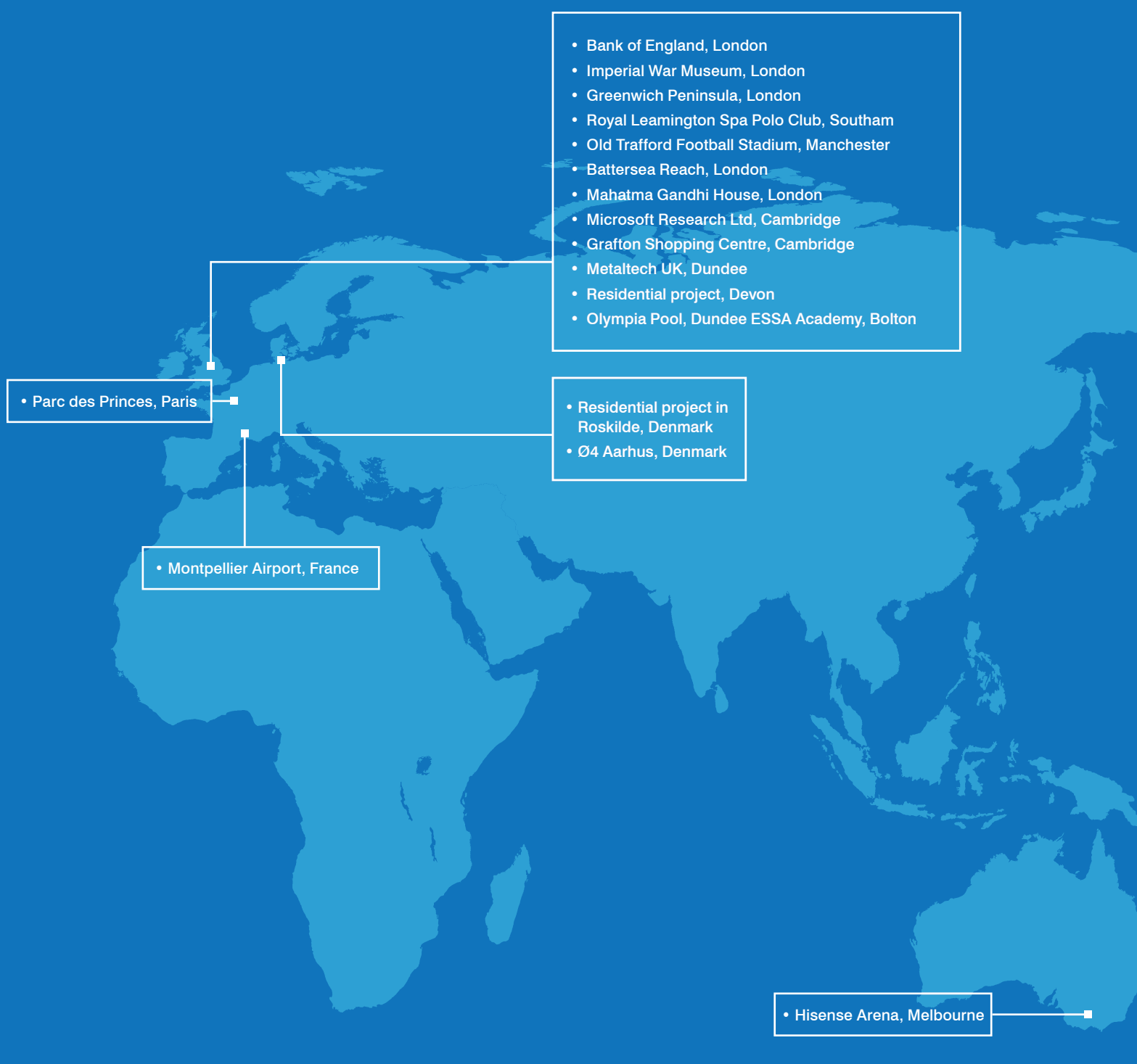
Cat. No. EUHR20YBS
Brushed Stainless Steel

Cat. No. EUHR20YPS
Polished Stainless Steel

TAPER-LOC® Projects Around the World

TAPER-LOC® has been specified for thousands of domestic and commercial projects all over the world including across Europe, North America, Middle East and Australasia. Here is a small selection of our TAPER-LOC® projects so far.





• Parc des Princes, Paris

• Montpellier Airport, France

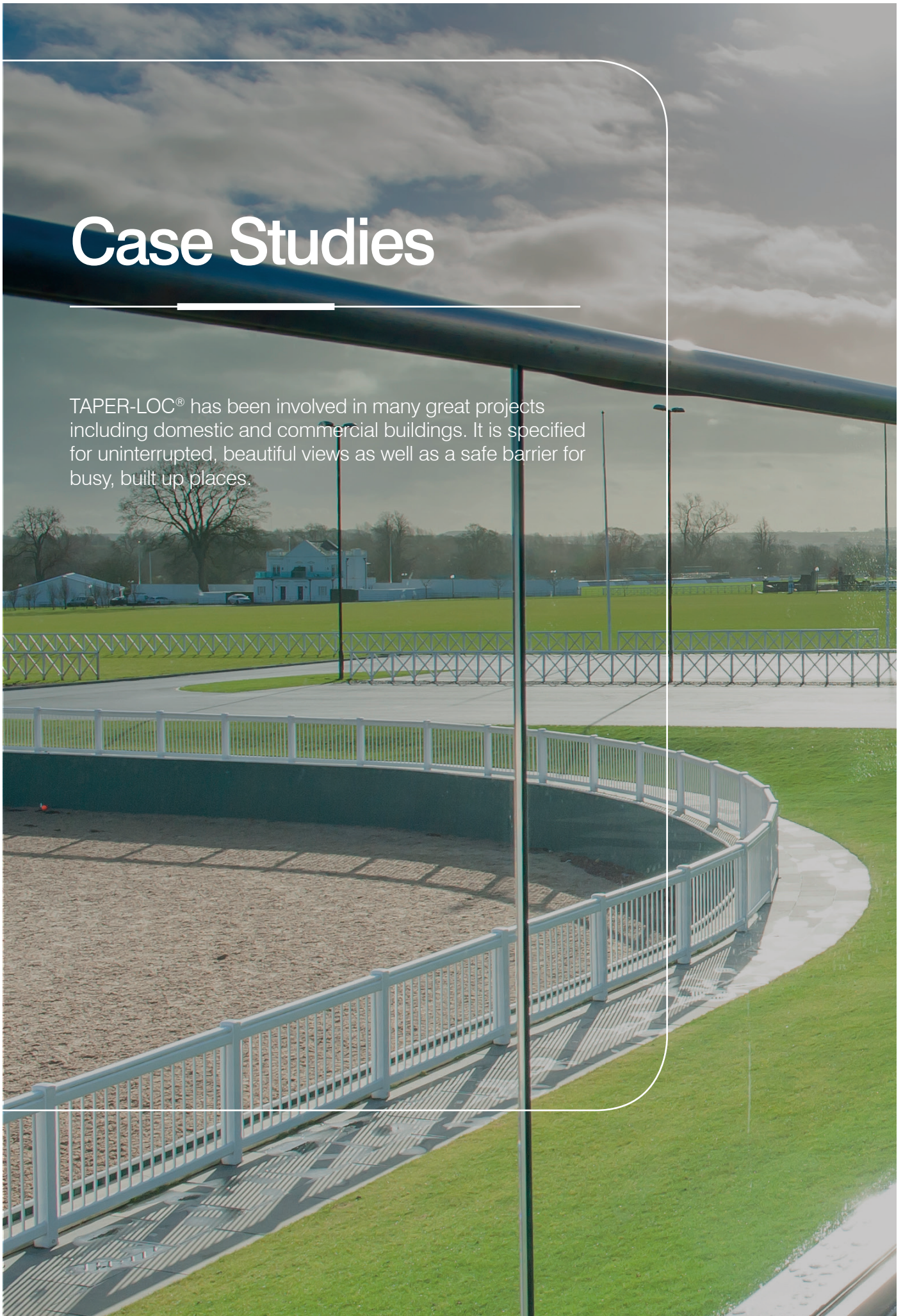
- Bank of England, London
- Imperial War Museum, London
- Greenwich Peninsula, London
- Royal Leamington Spa Polo Club, Southam
- Old Trafford Football Stadium, Manchester
- Battersea Reach, London
- Mahatma Gandhi House, London
- Microsoft Research Ltd, Cambridge
- Grafton Shopping Centre, Cambridge
- Metaltech UK, Dundee
- Residential project, Devon
- Olympia Pool, Dundee
- ESSA Academy, Bolton

- Residential project in Roskilde, Denmark
- Ø4 Aarhus, Denmark

• Hisense Arena, Melbourne

Case Studies

TAPER-LOC® has been involved in many great projects including domestic and commercial buildings. It is specified for uninterrupted, beautiful views as well as a safe barrier for busy, built up places.





Greenwich Peninsula, London

City Peninsula is one of the largest and most ambitious urban regeneration schemes ever seen in Europe with 166 luxurious apartments and triple level town houses, all benefiting from spectacular 360° panoramic riverside views.

Simon Boocock, the Managing Director for CRL Europe commented:

“This was a great project to be involved with and we are pleased the TAPER-LOC® system was again the preferred method for installing the balustrading. The TAPER-LOC® system has been used for a number of years now on numerous high calibre projects”

The development for clients Bellway Homes, was designed by RMA Architecture Ltd and constructed by Principal Contractors, Ardmore Group.

The Foreman Steel Fixer at Ardmore Group explained:

“We used approximately 2,500 units over 19 storeys and had no failed units. The wedges were positioned at 200mm centres on the advice of Building Control when we did the sample test panels, and the system was approved by all parties. The product worked wonderfully, was fit for purpose and was easy to use. The product information and instructions were also very clear”.

“The clean lines of the cantilever balustrade solution offered a simple but effective method to enclose the different types of balconies. The fully glazed enclosure allows river and city views and enhances the feeling of openness within the apartments.”





Residential Project, Devon

Wanting to make the most of breath taking views over the Devon coast for their client, the team at 100% Stainless Ltd called on the advantages of the TAPER-LOC® Frameless Glass Balustrade System to ensure the perfect fit.

“Uninterrupted views of the sea on a secure balustrade were the ultimate aim of this project”, explains 100% Stainless Manager. “However, the installation needed to fulfil a number of other practical requirements. Ultimately, the customer wanted a secure balustrade that would not obscure their view, but be strong enough to withstand the wind rolling in from the sea and create shelter.”

“Taper-Loc® is a strong and calculated product that has been heavily tested and proved to work well, and, ultimately for our client, keeps the view of the coastline perfectly visible. The specialist tooling and tapers enable the glass to be perfectly in line and the result is fantastic.”





Olympia Pool, Dundee

C.R. Laurence's TAPER-LOC® system has facilitated a speedy and simple installation of a new glass balustrade system at Dundee's eagerly awaited new Olympia swimming and leisure complex.

The complex features a 50 metre competition pool, wave pool, rapid river, dive pool, flumes and fitness suite. The Main Pool incorporates a movable floor and end walls to enable it to be reconfigured into a 25 metre Training Pool for clubs and public lane swimming.

METALtech Architectural Metalwork and Structural Glass Specialists who installed all the metalwork and the TAPER-LOC® system, commented, "CRL's range of Architectural Hardware is first-rate. In particular, their TAPER-LOC® system enabled a fast and efficient installation, which not only makes our job easier but keeps costs to a minimum. Their products are also backed up with a knowledgeable and friendly technical sales team."





ESSA Academy, Bolton

Essa Academy, Bolton wanted to create a striking staircase within the 'inside outside' space. The staircase has been built within the hall of the academy, which exhibits a modern blend of stylish interior design together with the spaciousness and open-air feeling of an outside area.

The Academy Senior Staff members were thrilled with the look, the practicality and the safety of the staircase as it is located in one of the busiest area of the building. "The hall is the heart of the Academy which, as well as providing a social meeting space, is also our circulation hub. It is one of our main priorities to offer to pupils the right environments to learn and develop their relationships. The staircase really acts as a bridge between the two."



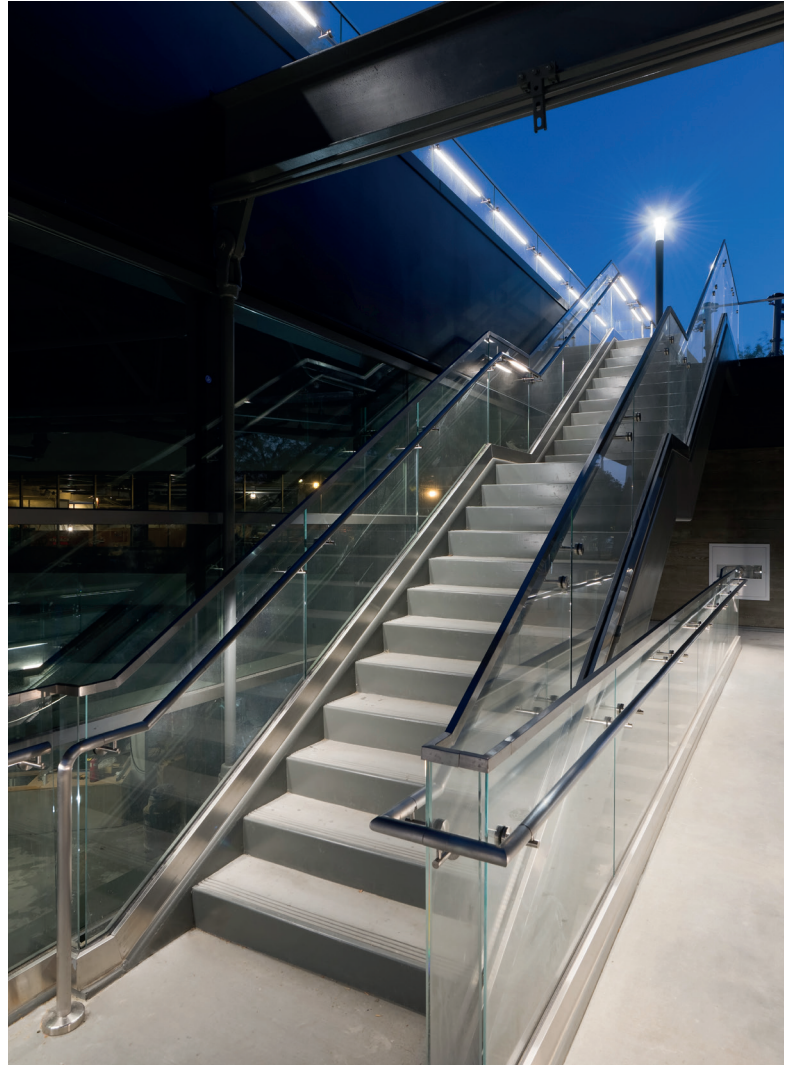


Banc of California Stadium, Los Angeles

The new, 22,000-seat Banc of California Stadium is located in Los Angeles, California. The Gensler-designed, state-of-the-art stadium will host football games and be the home of the Los Angeles Football Club. It's the former site of the Los Angeles Memorial Sports Arena, and represents the first open-air professional stadium built in Los Angeles since 1962. Amenities include restaurants, retail stores, a museum, and a conference centre.

PCL Construction served as the general contractor on the project, and C.R. Laurence (CRL) manufactured and supplied custom glass railings, all-glass entrances and bullet resistant transaction systems to enhance the aesthetics and function of the stadium. Helou Construction installed the glazing systems.

The stadium incorporates CRL's TAPER-LOC® Frameless Glass Balustrade System which offers the first and only ICC-ES approved base shoe for glass railings. It is also engineered to comply with 2015 IBC updates. This makes it easy to specify because it ensures codes will be met.





United States Courthouse, Los Angeles

The new United States Courthouse in Los Angeles is a 10-story, 633,000-square-foot facility containing 24 courtrooms and 32 justice chambers. The state-of-the-art structure features a distinct cube-shaped design with a serrated glass and aluminium facade that adds aesthetic depth, while effectively mitigating solar heat gain.

To help circulate light into the building's interior spaces, all-glass glazing systems were utilised, including over 762 metres of custom TAPER-LOC® from CRL. Golden Glass installed the system on stairways, walkways, and on floor ledges which overlook the atrium below.

The United States Courthouse in Los Angeles is driven by sustainability. With all-glass aesthetics, the TAPER-LOC® System helps optimise the flow of daylight to reduce energy consumption while promoting an open, collaborative environment.







Our experienced technical sales team are available to assist with any queries you may have.

Call free on 00 800 0421 6144

Ref: EUAGF18



ARCHITECTURAL GLASS FIXINGS

Architectural Glass & Metal Solutions

TAPER-LOC® Frameless Glass Balustrade System,
Juliette Balcony System, Frameless Windscreen Clamps,
Heavy Duty Standoffs, Spider Fixings, and Glass Awning

For more architectural specifications order our **Architectural Glass Fixings Brochure** now

Call FREE on 00 800 0421 6144

Fax FREE on 00 800 0262 3299



Manchester

Charles Babbage Avenue
Kingsway Business Park,
Rochdale, OL16 4NW, England
Tel: +44 (0) 1706 863 600
Fax: +44 (0) 1706 869 860
crlaurence.co.uk



Stuttgart

Boschstrasse 7
D-74360 Ilsfeld
Germany
Tel: +49 (0) 7062 915 93 15
Fax: +49 (0) 7062 915 93 16
crl.eu



Copenhagen

Stamholmen 70 Unit B,
DK-2650 Hvidovre
Denmark
Tel: +45 36 72 09 00
Fax: +45 36 70 33 35
crlaurence.dk



France

Boschstrasse 7
D-74360 Ilsfeld
Germany
Tel: +49 (0) 7062 915 93 12
Fax: +49 (0) 7062 915 93 16
crlaurence.fr